

## Upgrade eInstruction® Gen2 RF Receiver

The eInstruction® Gen2 RF Upgrade Utility allows you to upgrade your Gen2 RF receiver. The terms “base” and “receiver” both refer to your Gen2 RF receiver. The eInstruction® Gen2 RF Upgrade Utility is a PC utility only.

Before you upgrade your Gen2 RF receiver you must

1. Have administrative rights for your computer. If you do not have administrative rights for your computer then contact your organization’s IT personnel.
2. Have the newest release of CPS for PC installed on your computer
3. Install The eInstruction® Gen2 RF Upgrade Utility
4. Detect Gen2 RF Receiver in CPS



Gen2 RF Receiver

This document contains instructions on how to

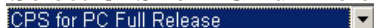
- Download the newest release of CPS
- Install the eInstruction® Gen2 RF Upgrade Utility
- Detect your Gen2 RF Receiver in CPS
- Upgrade your Gen2 RF receiver
- Set up WiFi avoidance on your Gen2 RF receiver
- Contact Technical Support

### Download the Newest Release of CPS

You must have the newest release of CPS installed on your computer before you install the eInstruction® Gen2 RF Upgrade Utility.

Follow these directions to download the newest release of CPS:

1. Go to [www.eInstruction.com](http://www.eInstruction.com).
2. Click the **Downloads** button.
3. Select CPS for PC Full Release in the drop-down menu.



4. Click the **OK** button.
5. Select your institution type.
6. Click the **Submit** button.  
If you select K-12 institution type then
  - a. Enter the appropriate information in the data entry boxes.
  - b. Click the **Submit** button.

K-12:	<input type="radio"/>
Higher Education:	<input type="radio"/>
Other:	<input type="radio"/>
<input type="button" value="Submit"/>	

Institution Type

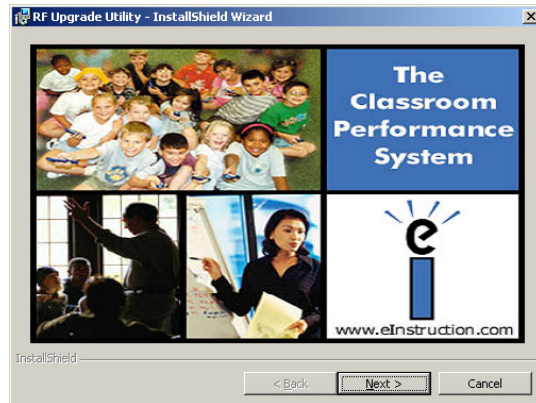
7. Click on the Classroom Performance System (56.03 MB) link [Classroom Performance System \(56.03 MB\)](#) to start the downloading process.
8. Run the CPS.full.release.4.01.1070.exe
9. Follow the on-screen prompts to complete the installation process.

## Install the eInstruction® Gen2 RF Upgrade Utility

You must install the eInstruction® Gen2 RF Upgrade Utility before you can upgrade your Gen2 RF receiver. The installation is available as a web download. Please contact eInstruction Technical Support if you need the Gen2 RF Upgrade Utility.

Follow these directions to install the eInstruction® Gen2 RF Upgrade Utility:

1. Click the link eInstruction provided you in your email.
2. Click the **Setup for Gen2 RF Upgrade Utility.exe** link.
3. Run the **Setup for Gen2 RF Upgrade Utility.exe**  
An RF Upgrade Utility – InstallShield Wizard appears.
4. Click the **Next** button.
5. Follow the on-screen prompts.
6. Click **I accept the terms in the license agreement**.
7. **If you do not click I accept the terms in the license agreement the installation process stops.**
8. Click the **Next** button.
9. Click the **Install** button.
10. Click the **Finish** button. The eInstruction® Gen2 RF Upgrade Utility is now installed.



*RF Upgrade Utility – InstallShield Wizard*

## Locate the eInstruction® Gen2 RF Upgrade Utility on Your Computer

Follow these directions to locate the eInstruction® Gen2 RF Upgrade Utility on your computer:

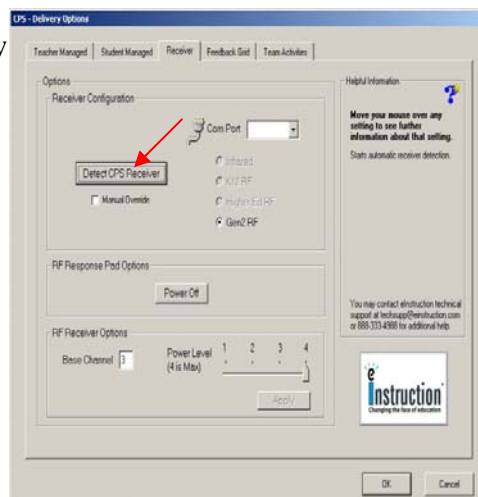
1. Click your computer's **Start** button.
2. Click **All Programs**.
3. Click **CPS**.
4. Click **RF Upgrade Utility** in the CPS menu

## Detect Your Gen2 RF Receiver in CPS

You must detect your Gen2 RF receiver in CPS and close CPS before using the eInstruction® Gen2 RF Upgrade Utility to upgrade your Gen2 RF receiver.

Follow these directions to detect your Gen2 RF receiver in CPS:

1. Plug in your Gen2 RF receiver to your computer's USB port.
2. Open CPS.
3. Open the CPS Delivery Options window  
The CPS Delivery Options window opens to the **Teacher Managed** tab.
4. Click the **Receiver** tab.
5. Click **Detect CPS Receiver**.
6. CPS will detect your current Gen2 RF receiver.
7. Click the **OK** button.
8. Close CPS.



The Receiver Tab in the CPS Delivery Options Window


## Upgrade Your Gen2 RF Receiver

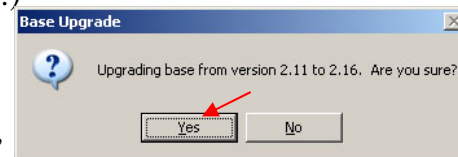
You can use the eInstruction® Gen2 RF Upgrade Utility to upgrade your Gen2 RF receiver after you

- Download the newest version of CPS
- Install the eInstruction® Gen2 RF Upgrade Utility
- Detect your Gen2 RF receiver in CPS

Follow these directions to upgrade your Gen2 RF receiver:

1. Plug in your gen2 RF receiver to your computer's USB port.
2. Start the eInstruction® Gen2 RF Upgrade Utility. (See “Locate the eInstruction® Gen2 RF Upgrade Utility on Your Computer”.)

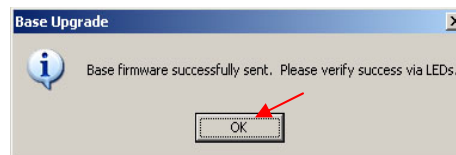
3. Click the **Base** button . A **Base Upgrade** dialogue box opens and ask, “Upgrading base from version 2.11 [or 2.12] to 2.16. Are you sure?”



Base Upgrade Dialogue Box “Upgrading base...”

4. Click the **Yes** button. The eInstruction® Gen2 RF Upgrade Utility begins to upgrade your Gen2 RF receiver.

A **Base Upgrade** dialogue box opens and ask, “Base firmware successfully sent. Please verify success via LEDs.”




Base Upgrade Dialogue Box “Please verify...”

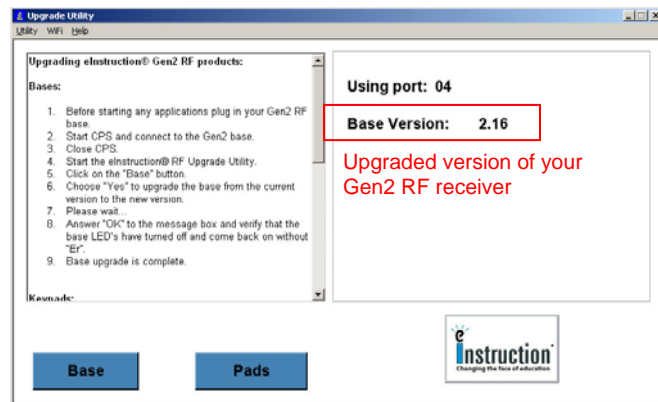
## Upgrade eInstruction® Gen2 RF Receiver

Follow these directions to verify success via LEDs:

- a. Unplug your Gen2 RF receiver.
- b. Plug in your Gen2 RF receiver.
  - The receiver firmware was successfully sent if your Gen2 RF receiver's display panel does not show an "Er" message.
  - The receiver firmware was not successfully sent if your Gen2 RF receiver's display panel does show an "Er" message.



5. Click the **OK** button  in the **Base Upgrade** dialogue box after you verify success via LEDs. Your Gen2 RF receiver upgrade is complete. The **Upgrade Utility** screen indicates the upgraded version of your Gen2 RF receiver.



*Upgrade Utility* Screen with Upgraded Version of Your Gen2 Receiver.

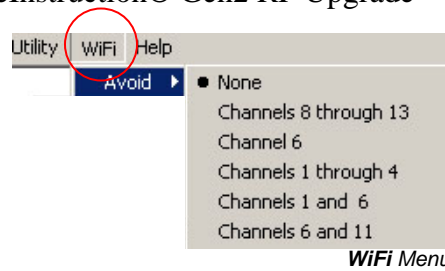
## Set Up WiFi Avoidance on Your Gen2 RF Receiver

If you experienced degradation of CPS performance due to heavy traffic on a nearby WiFi access point, you will want to set the Gen2 RF receiver to avoid the channel used by the nearby WiFi access point. The eInstruction® Gen2 RF Upgrade Utility provides a variety of channels to avoid based on how the Gen2 receiver uses the channels and the typical usage of the WiFi access points. You should choose the channel that avoids the majority of the WiFi network traffic in the vicinity of your Gen2 RF receiver. Version 2.16 receiver firmware allows you to avoid one or two of the typical WiFi channels. Typical WiFi channels are channels 1, 6, and 11.

You should work with your network administrator to determine what WiFi channels are in use in the room that contains your Gen2 RF receiver. Once you determine what WiFi channels are currently in use, you can avoid these channels by using the **WiFi** menu in the eInstruction® Gen2 RF Upgrade Utility.

Follow these directions to use the **WiFi** menu in the eInstruction® Gen2 RF Upgrade Utility to set WiFi avoidance:

1. Click the **WiFi** menu in the eInstruction® Gen2 RF Upgrade Utility.
2. Click **Avoid**. A list of WiFi channels appears
3. Select the WiFi channels you wish to avoid.

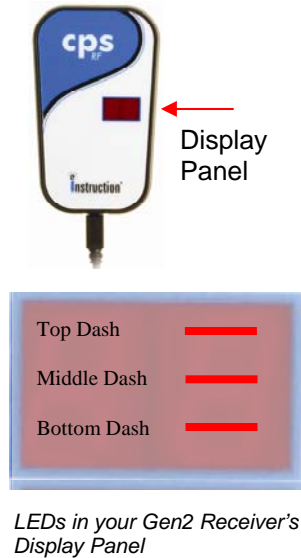


### WiFi Channels and LEDs

The display panel on your Gen2 RF receiver contains LEDs. When you first plug in your Gen2 RF receiver you will notice the LEDs in the display panel show an “H” and dashes next to the “H”. The dashes represent the three groups (channels 1, 6, and 11) of frequencies on the 2.4 GHz bandwidth; and the LEDs indicate the WiFi channel(s) you chose to avoid in the **WiFi** menu.

The following chart explains how the WiFi channel(s) you chose to avoid in the **WiFi** menu relates to the LEDs in your Gen2 RF receiver’s display panel.

WiFi Channels You Chose to Avoid in the <b>WiFi</b> Menu	LEDs
None	Top, middle, and bottom dashes light up
Channels 8 through 13	Middle and bottom dashes light up
Channel 6	Top and bottom dashes light up
Channels 1 through 4	Top and middle dashes light up
Channels 1 and 6	Top dash lights up
Channels 6 and 11	Bottom dash lights up



### Contact Technical Support

If you have questions related to the eInstruction® Gen2 RF Upgrade Utility please visit [www.einstruction.com/support](http://www.einstruction.com/support).