

Annual Report of the Measurement Services Unit of the  
Measurement and Evaluation Center of the Division  
of Instructional Innovation and Assessment  
at The University of Texas at Austin  
2000-2001

Charles S. Gaede, Mary E. Castilla,  
and Connie P. Williams

SR-02-01

July 2002

Measurement and Evaluation Center  
Division of Instructional Innovation and Assessment  
The University of Texas at Austin

## Contents

Tests Abbreviations and Descriptions .....	v
Introduction .....	1
Mission .....	1
Organization and Staffing .....	2
Services Provided .....	2
Policy and Student Information Services .....	4
Testing Services .....	11
Results .....	14
Credit Hours Placed on Official Student Records for All Students .....	14
Eligibility of All Students to Receive Placement or Credit by Examination .....	18
Evaluation .....	25
Policy and Student Information Section .....	25
Testing Section .....	25
Reference List .....	26
Appendix A: Policy and Student Information Section Schedule of Activities .....	27
Appendix B: Annual Schedule of On-Campus Placement and Credit by Examination Tests ...	32
Appendix C: Numbers of Scores for Which All Candidates Were Eligible to Receive Placement or Credit by Examination as the Result of Qualifying Scores Achieved on Each Examination: 2000-2001 .....	34

## Tables

Table 1	
Measurement Services Unit Organizational Chart . . . . .	3
Table 2	
List of Events Supported . . . . .	6
Table 3	
List of Documents Prepared and Reviewed for Publication . . . . .	7
Table 4	
Number of Client Contacts by Contact Method for the Policy and Student Information Section for the Academic Year 2000-2001 . . . . .	10
Table 5	
Number of Clients Served In-Person During Summer Orientation Session Advising . . . . .	10
Table 6	
Number of Candidates Registered for National and State Tests Administered in Paper and Pencil Format . . . . .	12
Table 7	
Number of Candidates Registered for National Tests Administered by Computer-Based Testing Format . . . . .	12
Table 8	
Computer-Based National Tests Registrations by Source . . . . .	12
Table 9	
Summary of Course Placement and Credit by Examination Tests Administered at UT Austin . . . . .	13
Table 10	
Number of Credit Hours Placed on Official Student Records for All Examination Types . . . . .	16
Table 11	
Number of Credit Hours Placed on Official Student Records for All Academic Units . . . . .	17

Table 12  
Number of Scores Evaluated for the Course Placement and Credit by Examination  
Program from All Examination Types: 1995-2001 ..... 19

Table 13  
Number of Scores Evaluated for the Course Placement and Credit by Examination  
Program from All Academic Units: 1995-2001 ..... 22

## Tests Abbreviations and Descriptions

AACN	AACN Certification for Critical Care Registered Nurse
Actuarial	Society of Actuaries examinations
CAL	Center for Applied Linguistics
CB Ach	College Board Achievement Test (renamed SAT II: Subject Tests)
CB AP	College Board Advanced Placement Tests
CB CLEP Subj	College Board College Level Examination Program Subject Tests used at UT Austin for awarding credit by examination
CB CLEP Open	College Board College Level Examination Program Tests, General and Subject, for use at other institutions
CB SAT II	College Board SAT II: Subject Tests used at UT Austin for course placement and credit by examination
GRE	Graduate Record Examinations, General Test
GRE Subj	Graduate Record Examinations, Subject Tests
GRE-W	Graduate Record Examinations, Writing Test
GMAT	Graduate Management Admission Test
GSP	Grammar, Spelling and Punctuation placement test
IB HL	International Baccalaureate Examinations Higher Level
LSAT	Law School Admission Test
MAT	Miller Analogies Test
MCAT	Medical College Admission Test
NLN MPII	National League of Nursing, Mobility Profile II tests
Other	Various low volume tests offered by Educational Testing Service
Pennsylvania	University of Pennsylvania developed test for Hindi Proficiency
PRAXIS	Praxis Series assessments from Educational Testing Service
Quick TASP	Official Texas Academic Skills Program test offered at institutions on a local schedule
TASP	Official Texas Academic Skills Program test offered at statewide test centers on statewide test dates
TASP Alt	Texas Academic Skills Program approved alternative tests for the official TASP Test offered at institutions on a local schedule
UT CBE	Tests prepared by UT Austin faculty for group administration
UT Department	Test prepared and administered by UT Austin faculty for individual credit by examination situations
UT Placement	Tests administered at UT Austin for placement only (includes GSP, Quick TASP, TASP Alt, and WP)
Wisconsin	University of Wisconsin developed tests in French and Spanish
WP	Word Processing placement test

## **Introduction**

This report summarizes the services provided by the Measurement Services Unit (MSU) of the Measurement and Evaluation Center (MEC), Division of Instructional Innovation and Assessment (DIIA), for the academic year 2000-2001 (September 1, 2000-August 31, 2001). The report provides a record of the mission, the organization, the services provided, the results of the services, and the evaluation of the services of the MSU.

## **Mission**

The MSU is one of four units within MEC, and its broad mission is “to provide educational testing services . . . to students, faculty, and administrators at U. T. Austin.” (Kelley, 1998, p. 1). The specific aspects of its mission are as follows:

1. Coordinate across departments, schools, and colleges the UT Austin course placement and credit-by-examination policies and procedures.
2. Provide information about the credit-by-examination program, including policies, test schedules, procedures, test fees, and test descriptions.
3. Help academic advisers, faculty, and staff members understand and use appropriately the results from academic assessment tests.
4. Distribute national and state testing programs registration materials and descriptive information.
5. Help faculty members select or prepare tests that are appropriate for use in establishing student eligibility for course placement and credit-by-examination.

6. Help faculty members determine the levels of performance that should be required for placement and credit by conducting validity and standard-setting studies that compare students' test scores with their end-of-course levels of achievement.
7. Schedule testing periods, collect fees, administer tests, keep records of test scores and results, and report eligibility for credit-by-examination to the students, departments, deans, and Registrar.
8. Administer tests on nationwide and statewide test dates by paper-and-pencil and computer based testing methods. (Kelley, 1998, pp. 2-3)

### **Organization and Staffing**

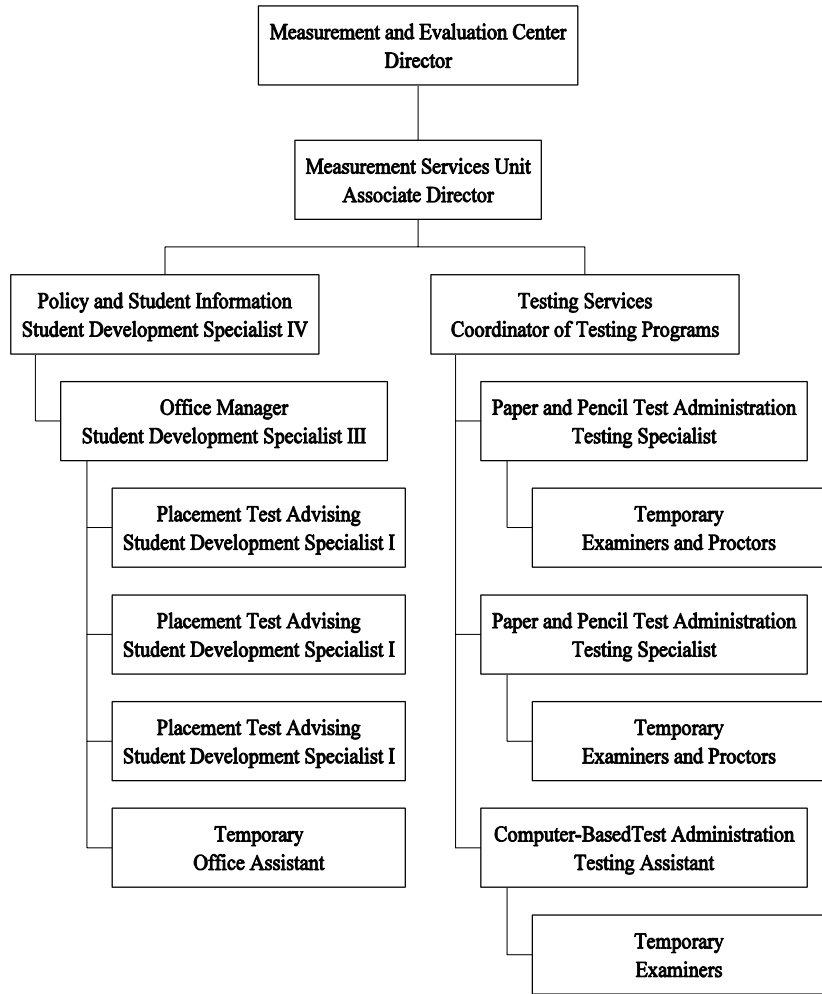
Just prior to September 2001, the MEC was incorporated into the Division of Instructional Innovation and Assessment along with the Center for Instructional Technology and the Center for Teaching Effectiveness. Within the MSU a minor change was made in the Testing Services section by having the Testing Assistant report directly to the Coordinator of Testing Programs. No other organizational changes occurred during the period covered by this report.

### **Services Provided**

In a broad sense, the Policy and Student Information (PASI) section is responsible for functions 1 through 4 of the mission statement, and the Testing Services (TS) section is responsible for functions 5 through 8, as shown in Table 1. The activities of each section in accomplishing the mission are summarized in this part of the report.

Table 1

Measurement Services Unit Organizational Chart



Note. This organization was in effect August 31, 2001

### Policy and Student Information Services

The PASI section accomplishes its part of the MSU mission by conducting an annual review of course placement and credit by examination policies, by participating in events hosted by other University departments, by preparing course placement and credit by examination publications for the MEC and reviewing course placement and credit by examination policy statements included in materials published by other University departments, and by responding to inquiries to the MEC by telephone, e-mail, and in-person. Maintaining the accuracy of the course placement and credit by examination information is a challenging and complicated process for the supervisor of the PASI section.

Although in one sense the annual review is a continuous process, the main effort starts in October and concludes by March. The general review process involves establishing in each academic department a liaison responsible for monitoring its course placement or credit by examination policy. The department liaison is provided a list of existing policies for the department and is asked to reaffirm the policies or make changes as appropriate. After the information from each academic department is returned to the supervisor of the PASI section, the process of revising publications begins. Every effort is made to complete the revision of most publications by March, so that students entering the University for the first time in the summer or fall terms will have course placement and credit by examination information relevant to their required course work. Ensuring the accuracy of the published information requires extensive attention to detail, multiple proof reading steps, and the assistance of other staff in the MEC.

The events hosted by other University departments that were supported by the PASI section are shown in Table 2. Some events occurred more than once. The Longhorn Saturday

event took place four times in the year, the New Freshman Orientation took place ten times, the Parent's Market Place took place seven times, and the New Faculty Seminar took place twice. For each of these events, at least one member of the PASI section staff was present to meet the University's guests and to discuss their questions regarding the University's policies for course placement and credit by examination.

Disseminating information in person at public events is complicated, but the task is supplemented by the course placement and credit by examination publications prepared and reviewed by the PASI section. Some publications are prepared and distributed by the PASI section at the MEC, but a large number of publications prepared and distributed by other departments at the University contain information about course placement and credit by examination. Periodically, the publications prepared at the MEC are reviewed by the PASI section for their suitability and relevancy, and changes are made when warranted. In every case, the PASI section is responsible for the content and accuracy of the course placement and credit by examination information in the publications. All publications from all units represent a combined effort to communicate this critical information to the University's public. A comprehensive list of these publications is shown in Table 3.

Table 2

List of Events Supported

Event	Host Department	Description
1. Longhorn Saturday	Freshman Admission Office	New freshmen and parents introduced to UT Austin four times a year
2. Rise and Shine	Freshman Admission Office	High school juniors visit campus
3. Honors Colloquium	Student Affairs, University Honors Center	Prospective students and parents visit campus
4. Longhorn Honors Program	Freshman Admission Office	(Market Place)
5. New Freshman Orientation	Dean of Students, New Student Services	Fall, spring, summer school orientations
6. Parents' Market Place	Dean of Students, New Student Services	Summer Orientation Sessions seven times a year
7. Train Recruiters	Freshman Admission Office	Admission recruiters who travel to high schools recruiting
8. New Faculty Seminar	Center for Teaching Effectiveness	New faculty training in fall and spring
9. Professional Development Day	Academic Counselors Association	Advising for students
10. Academic Advising Fair	Academic Advisors Association	Current UT Austin students

An annual schedule of activities for the PASI section that includes the annual review process, the activities listed in Table 2, and the review of publications listed in Table 3 is provided in Appendix A. This schedule serves as a guide for planning in the PASI section.

Table 3

List of Documents Prepared and Reviewed for Publication

Document	Publishing Department/Agency	Description
1. Credit by Examination Brochure	Measurement and Evaluation Center	Comprehensive description of course placement and credit by examination policies
2. Course Placement and Credit by Examination Handouts	Measurement and Evaluation Center	Comprehensive preparation guide for each subject
3. Credit by Examination Poster	Measurement and Evaluation Center	Poster for high school and community college counselors of Advanced Placement, International Baccalaureate, and SAT II Subject tests.
4. Course Placement and Credit by Examination Pamphlet	Measurement and Evaluation Center	Synopsis of course placement and credit by examination policies
5. The Role/Function of MEC	Measurement and Evaluation Center	Pamphlet describing the services of the Measurement and Evaluation Center
6. <i>Campus to Counselor</i>	Freshman Admission Office	Article communicating information to high school counselors
7. Summer Orientation Freshman Invitation	Dean of Students, New Student Services	A tri-fold brochure with course placement testing information for new freshmen
8. Transfer Orientation Invitation	Dean of Students, New Student Services	A tri-fold brochure with course placement testing information for transfer students

table continues

Table 3 (continued)

Document	Publishing Department/Agency	Description
9. New Student Guide	Dean of Students, New Student Services	Spring, summer, and fall orientation for new students with course placement and credit by examination information
10. Spring Welcome Program Invitation	Dean of Students, New Student Services	A tri-fold brochure that describes Welcome
11. Confirmation Letter	Dean of Students, New Student Services	Information for students who have confirmed reservations for summer orientation
12. Parents' Guide	Dean of Students, New Student Services	A guide tailored to the needs of parents of UT students
13. Counselor Handbook	Freshman Admission Office	A comprehensive guide about the University for high school counselors
14. President's Achievement Scholarship Memorandum	Office of Student Financial Services	Notice of scholarship award
15. Longhorn Opportunity Scholar Memorandum	Office of Student Financial Services	Invitation to join Gateway Program
16. We're Texas	Freshman Admission Office	Tri-fold brochure with information for newly admitted students
17. Preview Guide	Freshman Admission Office	Brochure for prospective students
18. General Information Catalog	Registrar, Official Publications	Catalog published by UT with comprehensive information

table continues

Table 3 (continued)

Document	Publishing Department/Agency	Description
19. TEA Sourcebook	Texas Education Agency	Statewide list of credit by examination policies for Advanced Placement and International Baccalaureate courses
20. Recognition Policies of North American Universities	International Baccalaureate of North America	Comprehensive listing of International Baccalaureate policies at North American universities

In addition to performing the functions above, the PASI staff also maintain an office with operational hours 8 a.m. to 5 p.m. Monday through Friday for the public to call, write, or visit to obtain course placement and credit by examination information. The public includes prospective students, parents of prospective and enrolled students, former and current students, University advisers, faculty, other staff and administrators, and persons from other institutions and other individuals. Telephone calls and in person contacts remain the most frequent use of the office (Table 4).

Two events the PASI section supports, New Freshman Orientation and the Parents' Market Place, merit specific mention. These events occur simultaneously on the first mornings of the seven New Freshman Orientation sessions. The section supervisor provides information regarding course placement and credit by examination for two hours to parents in the Parents' Market Place, and the section staff are advising the new freshmen in the Jester Center for approximately 3 1/2 hours in the morning and two hours in the afternoon. Upon review of the data in Table 5, one can see the magnitude of the number of new freshmen who seek advice from the staff.

Table 4

Number of Client Contacts by Contact Method for the Policy and Student Information Section for the Academic Year 2000-2001

Method	Month												Total
	Sep	Oct	Nov	Dec	Jan	Feb	Mar	Apr	May	Jun	Jul	Aug	
Telephone	1289	1377	1313	824	1683	911	1086	1831	1733	1432	1073	1888	16440
In-person	678	725	708	616	870	425	346	354	357	294	271	474	6118
E-mail	214	226	332	145	326	74	111	310	222	183	279	199	2621
Total	2181	2328	2353	1585	2879	1410	1543	2495	2312	1909	1623	2561	25179

Table 5

Number of Clients Served In-Person During Summer Orientation Session Advising

Year	Summer Orientation Session							Total
	1	2	3	4	5	6	7	
2000-2001	958	690	635	637	653	685	665	4923
Total	958	690	635	637	653	685	665	4923

## Testing Services

The functions assigned to the PASI and TS sections require close coordination between the two sections, because policies determine test administration requirements. The test administration functions of the TS section can be broadly grouped into three categories: (a) national and state paper and pencil administered tests, (b) national computer-based tests, and (c) locally scheduled and administered paper and pencil and computer-based tests. The volume of national and state paper and pencil tests administered is shown in Table 6. A change in test administration methods occurred in fall 1998, when alternative administration options for the Texas Academic Skills Program (TASP) test became available. The options allowed using campus-administered alternatives to the Official TASP Test, which is administered statewide. Subsequently, the number of tests administered on statewide testing dates sharply declined. The trend in recent years for national tests has been to convert paper and pencil administered tests into computer-based tests, resulting in the growth in computer-based testing shown in Table 7.

Candidate registration for national paper and pencil tests (Table 6) is done by the testing company. However, for the national computer-based tests (Table 7), candidates have three options for registration, one of which is through the local test center. It can be seen in Table 8 that 1222 (52%) of the registration for the national tests was done by the local staff.

The number of locally administered tests (Table 9) has remained relatively constant for several years. The fluctuations in volume appear to be minor and not to constitute a trend. An annual schedule for placement and credit by examination tests administered on-campus is shown in Appendix B. The registration process for locally administered tests is automated, except for that which is done as a part of orientation sessions.

Table 6

Number of Candidates Registered for National and State Tests Administered in Paper and Pencil Format

Year	Test						Total
	GRE Subj	LSAT	MCAT	MAT	TASP	CLEP Open	
1999-2000	360	1090	576	22	1788	296	4132
2000-2001	361	1067	565	33	961	159	3146

Table 7

Number of Candidates Registered for National Tests Administered by Computer-Based Testing Format

Year	Test						Total
	GRE	GRE-W	GMAT	TOEFL	PRAXIS	Other	
1998-1999	484		176	218	1		879
1999-2000	1455	11	493	595	8	5	2567
2000-2001	1748	11	678	741	1	8	3187

Note. The national computer-based test center became operational in late November 1998 with 5 testing stations. The number of testing stations was increased to 8 by January 2000.

Table 8

Computer-Based National Tests Registrations by Source

Year	UT Austin		NRC		Internet		Total
	N	Percent	N	Percent	N	Percent	
2000-2001	1222	52	968	41	164	7	2354

Note. Data obtained from Educational Testing Services report. NRC = National Registration Center.

Table 9

Summary of Course Placement and Credit by Examination Tests Administered at UT Austin<sup>a</sup>

Test Type	Year					
	1995-1996	1996-1997	1997-1998	1998-1999	1999-2000	2000-2001
CAL				3	4	4
CB CLEP Subj	4,606	2,827	2,379	1,923	1,267	1,012
CB SAT II/CB Ach	6,540	7,532	6,138	6,193	6,282	6,438
NLN MPII	65	56	69	99	99	69
Pennsylvania				72	49	82
UT CBE <sup>b</sup>	1,477	1,652	1,438	1,488	1,469	1,676
UT Department	300	333	355	232	226	211
UT Placement	1,095	1,426	1,633	1,791	1,524	1,200
Wisconsin		2,313	2,739	3,208	3,184	3,211
Total	14,083	16,139	14,751	15,009	14,104	13,903

<sup>a</sup>The data in this table differ from data in the 1999-2000 annual report due to a change in the classification method.

<sup>b</sup>Includes UT Austin prepared Texas Government Test that supplements the CB AP and CB CLEP Subj tests.

## Results

The preceding section reported the test administration activities of the Testing Services section at UT Austin. However, large numbers of tests are administered at other sites, and the scores are sent to UT Austin for evaluation. Two broad measures of the activity of the course placement and credit by examination program at UT Austin are the amount of course credit placed on official student records and the number of scores sent for evaluation.

### Credit Hours Placed on Official Student Records for All Students

The criteria for placing credit on official student records are that there must be a valid university course, there must be a qualifying score on an approved test, and the student must choose to accept the credit by examination rather than take the course. For some courses, students who have borderline qualifying scores are better advised to take the classroom course rather than accept the credit by examination.

Often students wait one or more semesters before making their decision to accept their credit by examination and notifying the MEC to report it to the registrar, for various reasons. But the UT Austin policy of awarding letter grades that count in the student's cumulative grade point average is a unique, significant influence. Students may choose to accept their credit by examination with the symbol *CR*, which does not count in their cumulative grade point average, or with a letter grade of *C*, *B*, or *A*, which does count. It is common practice for students who have obtained a grade of *B* to wait until they know whether or not a *B* will help or hurt their cumulative grade point average. Consequently, the time during a student's academic career that eligible credit by examination can be reported to the registrar extends from the student's first to last semester. Additionally, former students may request that credit by examination be placed on their transcripts, though it must be reported within ten years of the test administration date. The

data reported in Tables 10 and 11, therefore, are simply the number of semester credit hours reported to the registrar during the reporting periods.

In Table 10, the column totals across the years show that the total number of credit hours reported has increased steadily. On the other hand, there has been a decline since 1997-1998 in the number of credit hours reported on the bases of the UT Department examinations. The decrease in the CB CLEP Subj examination credit hours reported is due to UT Austin replacing the CLEP Subj examinations in Spanish, German, and French with the Wisconsin Spanish and French tests and the CB SAT II Subject exam in German.

The data from Table 10 are reorganized by college or school (Academic Unit) and presented in Table 11. It is clear that students in the College of Liberal Arts report the most credit by examination hours and that students in the College of Natural Sciences report the next largest amount. The pattern across years for most colleges and schools is a steady increase in the number of credit hours reported.

Table 10

Number of Credit Hours Placed on Official Student Records for All Examination Types

Test Type	Year					
	1995-96	1996-97	1997-98	1998-99	1999-00	2000-01
Actuarial			4			
CAL				18	21	18
CB AP	27,084	32,418	34,440	41,442	43,764	52,088
CB CLEP Subj	19,849	16,379	9,264	5,847	3,479	2,925
CB SAT II (Includes CB Ach)	15,326	16,568	16,721	21,004	21,783	24,186
IB HL	176	223	361	488	807	873
NLN MPII	510	458	620	669	572	800
Pennsylvania				396	282	456
UT CBE	6,013	6,535	6,702	6,533	5,009	6,434
UT Department	2,271	2,594	2,506	1,415	1,066	1,336
Wisconsin		6,369	17,848	21,428	22,485	27,014
Total	71,229	81,544	88,466	99,240	99,268	116,130

Table 11

Number of Credit Hours Placed on Official Student Records for All Academic Units

Academic Unit	Year					
	1995-96	1996-97	1997-98	1998-99	1999-00	2000-01
Architecture	25					
Business Administration	57	144	100	123	156	378
Communication	16	30	50	50	6	6
Education	5	9	137	384	428	150
Engineering	18	6	17	16	20	18
Fine Arts	270	299	283	398	408	487
Liberal Arts	51,211	59,085	65,402	71,264	70,746	82,807
Natural Sciences	19,115	21,513	21,857	26,280	26,932	31,484
Nursing	512	458	620	725	572	800
Total	71,229	81,544	88,466	99,240	99,268	116,130

### Eligibility of All Students to Receive Placement or Credit by Examination

Besides the number of credit hours placed on official student records, the number of scores submitted for evaluation is a revealing measure of the activity of the course placement and credit by examination program. This measure includes scores from students who have taken tests on campus, who have attended the University or who have a pending application and whose scores are above or below the minimum for placement or credit, and whose scores are for tests not approved for use at the University. Scores received from students who do not meet the criteria above are not included in this report. The number of test scores received for evaluation has steadily increased across the years.

When examining the data in the “No” and “Yes” columns under “Credit Eligible” in Table 12, one should keep in mind that the “UT Placement” and “Not Used UT” test types are not bases for the awarding of any credit, so those data are all reported in the “No” column under “Credit Eligible.” Otherwise, the trend is that more than 50% of the scores submitted for evaluation by test type and across years are above the minimum score for awarding credit by examination. A detailed listing of the percentage of scores above the minimum for eligibility for placement or credit by examination for each approved test for the reporting year 2000-2001 can be found in Appendix C.

The data from Table 12 are re-categorized by academic unit in Table 13. The College of Communication recognizes mostly placement-only examinations, and the TASP Office uses only a placement examination (TASP Alternative Test). More than 50% of the scores in each academic unit across years, except as noted above, satisfy eligibility standards for awarding credit by examination. Scores from tests “Not Used UT” (Table 12) are included in the “No” column.

Table 12

Number of Scores Evaluated for the Course Placement and Credit by Examination Program from All Examination Types: 1995-2001

Test Type	1995-1996					1996-1997					
	Credit Eligible				Total	Credit Eligible				Total	
	No		Yes			No		Yes			
	N	%	N	%	N	N	%	N	%	N	
Actuarial											
CAL											
CB AP	3,277	34	6,274	66	9,551	3,513	35	6,638	65	10,151	
CB CLEP Subj	1,480	31	3,336	69	4,816	923	23	3,079	77	4,002	
CB SAT II	6,443	46	7,717	55	14,160	5,756	43	7,650	57	13,406	
IB HL	36	48	39	52	75	62	53	54	47	116	
NLN MPII	4	5	71	95	75	9	14	55	86	64	
Pennsylvania											
UT CBE	605	47	696	54	1,301	611	46	711	54	1,322	
UT Department	8	3	305	97	313	4	1	339	99	343	
UT Placement	1,129	100			1,129	1,438	100			1,438	
Wisconsin						226	21	876	80	1,102	
Not Used UT	2,197	100			2,197	2,170	100			2,170	
Total	15,179	45	18,438	55	33,617	14,712	43	19,402	57	34,114	

Note. Percents are rounded to the nearest whole number.

table continues

Table 12 (continued)

Number of Scores Evaluated for the Course Placement and Credit by Examination Program from  
All Examination Types: 1995-2001

Test Type	1997-1998					1998-1999				
	Credit Eligible				Total	Credit Eligible				Total
	No		Yes			No		Yes		
N	%	N	%	N	N	%	N	%	N	
Actuarial	1	25	3	75	4					
CAL								3	100	3
CB AP	4,418	36	7,750	64	12,168	4,712	37	8,119	63	12,831
CB CLEP Subj	395	14	2,392	86	2,787	528	26	1,479	74	2,007
CB SAT II	7,753	50	7,844	50	15,597	5,913	43	7,732	57	13,645
IB HL	84	55	70	46	154	102	49	108	51	210
NLN MPII	3	5	62	95	65	10	13	69	87	79
Pennsylvania						2	3	70	97	72
UT CBE	594	47	683	54	1,277	570	46	671	54	1,241
UT Department	1	0	330	100	331	10	4	247	96	257
UT Placement	1,494	100			1,494	1,794	100			1,794
Wisconsin	509	19	2,148	81	2,657	613	21	2,381	80	2,994
Not Used UT	2,288	100			2,288	2,388	100			2,388
Total	17,540	45	21,282	55	38,822	16,642	44	20,879	56	37,521

Note. Percents are rounded to the nearest whole number.

table continues

Table 12 (continued)

Number of Scores Evaluated for the Course Placement and Credit by Examination Program from All Examination Types: 1995-2001

Test Type	1999-2000					2000-2001					
	Credit Eligible				Total	Credit Eligible				Total	
	No		Yes			No		Yes			
	N	%	N	%	N	N	%	N	%	N	
Actuarial											
CAL			4	100	4			4	100	4	
CB AP	5,926	39	9,269	61	15,195	7,407	42	10,221	58	17,628	
CB CLEP Subj	347	26	970	74	1,317	159	14	950	86	1,109	
CB SAT II	6,034	43	7,922	57	13,956	6,399	44	8,174	56	14,573	
IB HL	117	45	145	55	262	116	47	133	53	249	
NLN MPII	8	9	81	91	89	2	2	95	98	97	
Pennsylvania	1	2	48	98	49	3	4	79	96	82	
UT CBE	425	42	578	58	1,003	342	35	627	65	969	
UT Department	9	4	213	96	222			234	100	234	
UT Placement	1,649	100			1,649	1,201	100			1,201	
Wisconsin	397	13	2,778	88	3,175	275	8	3,047	92	3,322	
Not Used UT	2,622	100			2,622	2,751	100			2,751	
Total	17,535	44	22,008	56	39,543	18,655	44	23,564	56	42,219	

Note. Percents are rounded to the nearest whole number.

Table 13

Number of Scores Evaluated for the Course Placement and Credit by Examination Program from All Academic Units: 1995-2001

Academic Unit	1995-1996					1996-1997				
	Credit Eligible				Total N	Credit Eligible				Total N
	No		Yes			No		Yes		
N	%	N	%	N	N	%	N	%	N	
Architecture			1	100	1					
Business Admin	5	23	17	77	22	7	12	50	88	57
Comm <sup>a</sup>	1,130	100	6	1	1,136	1,438	99	8	1	1,446
Education			2	100	2	1	9	10	91	11
Engineering			7	100	7			2	100	2
Fine Arts	63	43	83	57	146	75	47	86	53	161
Liberal Arts	8,714	44	11,322	57	20,036	8,134	40	12,287	60	20,421
Natural Sciences	5,263	43	6,928	57	12,191	5,048	42	6,904	58	11,952
Nursing	4	5	72	95	76	9	14	55	86	64
TASP Office <sup>b</sup>										
Total	15,179	45	18,438	55	33,617	14,712	43	19,402	57	34,114

Note. Data include scores received for tests not used at UT Austin (see Table 12). Percents are rounded to the nearest whole number.

<sup>a</sup>Includes the GSP and WP placement tests for which no credit is awarded.

<sup>b</sup>State approved TASP Alternative test for placement only. Discontinued use in summer 1999.

table continues

Table 13 (continued)

Number of Scores Evaluated for the Course Placement and Credit by Examination Program from All Academic Units: 1995-2001

Academic Unit	1997-1998					1998-1999				
	Credit Eligible				Total N	Credit Eligible				Total N
	No		Yes			No		Yes		
N	%	N	%	N	N	%	N	%	N	
Architecture										
Business Admin	3	7	41	93	44	5	13	33	87	38
Comm <sup>a</sup>	1,473	99	13	1	1,486	1,440	99	12	1	1,452
Education	27	26	77	74	104	62	33	128	67	190
Engineering			6	100	6	1	17	5	83	6
Fine Arts	89	42	121	58	210	84	40	126	60	210
Liberal Arts	9,688	41	13,688	59	23,376	9,288	42	13,046	58	22,334
Natural Sciences	6,236	46	7,274	54	13,510	5,398	42	7,456	58	12,854
Nursing	3	5	62	95	65	10	12	73	88	83
TASP Office <sup>b</sup>	21	100			21	354	100			354
Total	17,540	45	21,282	55	38,822	16,642	44	20,879	56	37,521

Note. Data include scores received for tests not used at UT Austin (see Table 12). Percents are rounded to the nearest whole number.

<sup>a</sup>Includes the GSP and WP placement tests for which no credit is awarded.

<sup>b</sup>State approved TASP Alternative test for placement only. Discontinued use in summer 1999.

Table 13 (continued)

Number of Scores Evaluated for the Course Placement and Credit by Examination Program from  
All Academic Units: 1995-2001

Academic Unit	1999-2000					2000-2001				
	Credit Eligible				Total N	Credit Eligible				Total N
	No		Yes			No		Yes		
N	%	N	%	N	%	N	%	N	%	
Architecture										
Business Admin	8	21	31	80	39	22	36	39	64	61
Comm <sup>a</sup>	1,264	100	2	0	1,266	1,199	100	2	0	1,201
Education	103	31	234	69	337	172	36	303	64	475
Engineering			8	100	8			8	100	8
Fine Arts	123	49	129	51	252	114	45	137	55	251
Liberal Arts	9,518	41	13,675	59	23,193	10,423	42	14,627	58	25,050
Natural Sciences	6,126	44	7,848	56	13,974	6,721	45	8,353	55	15,074
Nursing	8	9	81	91	89	2	2	95	98	97
TASP Office <sup>b</sup>	385	100			385	2	100			2
Total	17,535	44	22,008	56	39,543	18,655	44	23,564	56	42,219

Note. Data include scores received for tests not used at UT Austin (see Table 12). Percents are rounded to the nearest whole number.

<sup>a</sup>Includes the GSP and WP placement tests for which no credit is awarded.

<sup>b</sup>State approved TASP Alternative test for placement only. Discontinued use in summer 1999.

## **Evaluation**

### Policy and Student Information Section

The MEC satisfaction survey (part of a larger Dean of Students Survey) was administered electronically to new freshmen who attended orientation during this reporting period. The survey results were to be used to evaluate the effectiveness in terms of “helpfulness” of various methods used to communicate information regarding course placement and credit by examination to admitted students up to the time of their orientation check-in day. The response rate was too low to provide useful evaluation data. No other indications of problems exist with respect to the service provided by the PASI section.

### Testing Section

As with the PASI section, limited evaluation information was collected during this reporting period. Two national testing programs include an exit evaluation completed by examinees after their test. These exit evaluations survey the examinees’ experience at the test center with respect to the performance of the test center’s staff on the day of the test. In general the responses were positive with respect to the UT Austin testing staff’s performance.

## Reference List

Kelley, H. Paul. (1998). Measurement and Evaluation Center Report to the Provost: September 25, 1998. Austin, Texas: The University of Texas at Austin, Measurement and Evaluation Center.

## Appendixes

### Appendix A

#### Policy and Student Information Section Schedule of Activities

**PURPOSE:** This time line serves as a planning document for the Policy and Student Information Section of the Measurement Services Unit of the Measurement and Evaluation Center. It is updated as needed and annually.

<u>TIME PERIOD</u>	<u>ACTIVITY</u>
September, 2000	<i>Campus to Counselor</i> article due, Freshman Admission Center
September, 2000	Longhorn Saturday, Freshman Admission Center
September, 2000	Verify faculty contacts for course placement and CBE policy review
September, 2000	Update Summer Orientation Freshman Invitation with CBE information Office of Dean of Students
September, 2000	Update Transfer Orientation Invitation with CBE information Office of Dean of Students
September, 2000	Update CBE faculty liaison list with current faculty representatives
October, 2000	Get spring and summer, 2001, petition deadline dates
October, 2000	Longhorn Saturday, Freshman Admission Center
October, 2000	Print policy review forms and pack policy review packets
October, 2000	Update Summer Orientation Freshman Invitation, Office of Dean of Students
October, 2000	Update Spring Orientation 2002, New Student Guide with CBE information, Office of Dean of Students

appendix continues

<b><u>TIME PERIOD</u></b>	<b><u>ACTIVITY</u></b>
November, 2000	Update Spring Welcome Program Invitation with CBE information, Office of Dean of Students
November, 2000	Update Summer Orientation Transfer Invitation with CBE information, Office of Dean of Students
November, 2000	Mail policy review packets and begin compiling policy information as it is returned by departments
November, 2000	Update CBE handouts with new policies
December, 2000	Longhorn Saturday, Freshman Admission Center
December, 2000	Report of AP and CLEP examinations used by UT Austin, Office of Institutional Studies
December, 2000	<i>Campus to Counselor</i> article due, Freshman Admission Center
December, 2000	Contact faculty who have not returned policy review packets Update MEC course placement and CBE test information guides
December, 2000	Update CBE handouts with new policies
January, 2001	Update CBE handouts with new policies
January, 2001	General Welcome Freshman Spring Orientation (CBE Presentation), Office of Dean of Students
January, 2001	Exhibits Fair for Faculty, Center For Teaching Effectiveness
Spring, 2001	Professional Development Day, College of Communications
January, 2001	Get CBE fall petition deadline dates
February, 2001	Update Parents' Guide with CBE information
February, 2001	Distribute course placement and CBE test information guides
February, 2001	Provide updated CBE policies to associate director, MEC Data Processing

<b><u>TIME PERIOD</u></b>	<b><u>ACTIVITY</u></b>
February, 2001	Provide updated CBE policies and advising information to update web pages to MEC Data Processing staff
March, 2001	Update Summer School Orientation New Student Guide, 2001 with CBE information, Office of Dean of Students
March, 2001	Update Counselor's Handbook with CBE information, Freshman Admission Center
March, 2001	Rise & Shine Program, Freshman Admission Center
March, 2001	Begin updating Testing Period and cut-score sheets for SAT II, CLEP, AP, and IB
March, 2001	Update "You May Not Need To Wait In Line To Ask Testing Questions" form to be included in Freshman Orientation Program 2001 brochure, Office of Dean of Students
March, 2001	Update President's Achievement Scholarship memo with CBE information, Office of Student Financial Services
March, 2001	Update Orientation Survey of Sources of Information
March, 2001	Begin updating work on CBE brochure and poster Update other UT Austin official publications
March, 2001	Update Summer Orientation Fast Fact sheet with CBE information, Office of Dean of Students
March, 2001	Update General Information with CBE information, Office of the Registrar
March, 2001	Update Texas Education Agency source book with AP and IB information, Report to Registrar for Division of Advanced Academic Services, TEA
April, 2001	Update Summer Orientation Freshman Program Guide with CBE information, Office of Dean of Students

<b><u>TIME PERIOD</u></b>	<b><u>ACTIVITY</u></b>
April, 2001	Provide through e-mail updated SAT II, CLEP, AP, IB cut score sheet, and math advise information after April 1, 1995 to Engineering Student Affairs Office
April, 2001	<i>Campus to Counselor</i> article due, Freshman Admission Office
April, 2001	Longhorn Honors Program–Marketplace, Freshman Admission Center
April, 2001	Provide updated CBE policies and advising information for Summer Orientation test results slips to MEC data processing staff
April, 2001	Complete work on CBE brochure and poster
April, 2001	Update MEC Evaluation for students attending Summer Orientation Sessions, 2001, Office of Dean of Students
May, 2001	Fast Fact with CBE update, Office of Dean of Students
May, 2001	Update Preview Guide with CBE information, Freshman Admission Center
May, 2001	Order CBE brochure and poster

<b><u>TIME PERIOD</u></b>	<b><u>ACTIVITY</u></b>
May, June, July 2001	Market Place Parents' Program as part of SOS, Office of Dean of Students
June, 2001	General Welcome Summer School Orientation (CBE Presentation), Office of Dean of Students
June, 2001	Update Fall Orientation New Student Guide with CBE information, Office of Dean of Students
June, 2001	Update Freshman Guide (Transfer Guide) with CBE information, Freshman Admission Center
July, 2001	WE'RE TEXAS Goes with letter of acceptance for freshmen and transfer students. Updated once a year, Admission Office, MAI 7
July, 2001	Parents' Program Information Fair in conjunction with the Honors Colloquium, The Ex-Students' Association
July, 2001	Longhorn Saturday, Freshman Admission Center
August, 2001	The Role/Function of MEC Revision
August, 2001	Send 2000 CBE posters to Freshman Admissions Office for distribution to Texas high schools and community colleges
August, 2001	New Faculty Teaching/Orientation Seminar, Center for Teaching Effectiveness
August, 2001	General Welcome--New Freshman Orientation, Office of Dean of Students
August, 2001	Faculty start classes and begin course review for next year

## Appendix B

Annual Schedule of On-Campus Placement and Credit by Examination Tests

Test Type	Test Name	Test Period					
		Late May	June July	Late Aug	Sept Oct	Jan	Mar Apr
CAL	Polish Proficiency Test				X		X
CB CLEP Subj	American Government	X		X	X	X	X
	American Literature				X		X
	Calculus with Elementary Functions	X		X	X	X	X
	College Algebra	X		X	X	X	X
	English Literature				X		X
	Introductory Psychology	X		X	X	X	X
	Introductory Sociology	X		X	X	X	X
	Principles of Macroeconomics	X		X	X	X	X
	Principles of Microeconomics	X		X	X	X	X
CB SAT II	German with Listening	X	X	X	X	X	X
	Korean with Listening			X	X	X	X
	Mathematics Level 1C	X	X	X	X	X	X
	Physics	X		X		X	
	Writing	X	X	X	X	X	X
Pennsylvania	Hindi Proficiency						X
UT CBE	Biology	X		X		X	
	Chemistry 301	X	X	X	X	X	X

Test Type	Test Name	Test Period					
		Late May	June July	Late Aug	Sept Oct	Jan	Mar Apr
	Chemistry 302	X		X		X	
	Chemistry 304	X		X	X	X	X
	Chemistry 305	X		X		X	
	Chinese	X		X	X	X	X
	Computer Sciences 303E			X	X		X
	Computer Sciences 307			X	X		X
	Computer Sciences 315			X	X		X
	Government 312L				X		X
	Hindi 612						X
	History 315K				X		X
	History 315L				X		X
	Japanese	X		X	X	X	X
	Latin			X		X	
	Management Information Systems 310			X		X	
	Physics: Mechanics	X		X		X	
	Physics: Elec. and Mag.	X		X		X	
	Russian	X	X	X	X	X	X
UT Placement	GSP	X	X	X	X	X	X
	WP	X	X	X	X	X	X
Wisconsin	French	X	X	X	X	X	X
	Spanish	X	X	X	X	X	X

## Appendix C

Numbers of Scores for Which All Candidates Were Eligible to Receive Placement or Credit by Examination as the Result of Qualifying Scores Achieved on Each Examination: 2000-2001

Test Type	Test Name	Credit Eligibility						Total N
		Incomplete		No Credit		Credit		
		N	%	N	%	N	%	
CAL	Polish Proficiency Test					4	100	4
CB AP	Art History			49	52	45	48	94
	Studio Art: Drawing			15	35	28	65	43
	Studio Art: General			34	55	28	45	62
	Biology			413	61	270	40	683
	Calculus AB			506	32	1089	68	1595
	Calculus BC			157	23	516	77	673
	Chemistry			367	65	195	35	562
	Computer Science A			167	59	115	41	282
	Computer Science AB			43	26	123	74	166
	Economics: Macro			550	56	426	44	976
	Economics: Micro			296	67	145	33	441
	English Language			776	26	2199	74	2975
	English Literature			596	22	2179	79	2775
	Environmental Science			63	97	2	3	65
	French Language			32	27	88	73	120
French Literature					14	100	14	

## Appendix C (continued)

Test Type	Test Name	Credit Eligibility						Total N
		Incomplete		No Credit		Credit		
		N	%	N	%	N	%	
	German Language			20	40	30	60	50
	Government and Politics: United States	593	44	477	36	267	20	1337
	History: European			168	56	133	44	301
	History: United States			1231	68	589	32	1820
	Human Geography			1	50	1	50	2
	Latin: Vergil			14	40	21	60	35
	Latin Literature			12	63	7	37	19
	Music Theory			13	46	15	54	28
	Physics B			115	41	163	59	278
	Physics C: Mechanics			91	30	209	70	300
	Physics C: Electricity and Magnetism			94	50	94	50	188
	Psychology			196	52	183	48	379
	Spanish Language			77	10	663	90	740
	Spanish Literature			5	5	92	95	97
	Statistics			172	37	292	63	464
Total		593	3	6814	39	10221	58	17628
CB CLEP Subj	American Government	4	1	59	10	520	89	583
	American Literature			11	42	15	58	26

## Appendix C (continued)

Test Type	Test Name	Credit Eligibility						Total N
		Incomplete		No Credit		Credit		
		N	%	N	%	N	%	
	Calculus with Elementary Functions			6	11	47	89	53
	College Algebra	2	6	11	34	19	59	32
	College French			1	100			1
	College German			1	100			1
	College Spanish			7	88	1	12	8
	English Literature	2	10	7	33	12	57	21
	Introductory Psychology			11	24	34	76	45
	Introductory Sociology			10	11	83	89	93
	Principles of Macroeconomics			8	6	137	95	145
	Principles of Microeconomics			19	19	82	81	101
Total		8	1	151	14	950	86	1109
CB SAT II	German with Listening			51	40	78	61	129
	Korean with Listening			2	3	75	97	77
	Mathematics Level IC			2651	43	3529	57	6180
	Mathematics Level IIC			39	3	1303	97	1342
	Physics			193	33	400	68	593
	Spanish: Listen & Read			3	100			3

## Appendix C (continued)

Test Type	Test Name	Credit Eligibility						Total N
		Incomplete		No Credit		Credit		
		N	%	N	%	N	%	
CB SAT II	Writing			3,460	55	2,789	45	6,249
Total				6,399	44	8,174	56	14,573
IB HL	Art/Design			1	10	9	90	10
	Biology			25	89	3	11	28
	Chemistry			5	63	3	38	8
	Computer Science			4	57	3	43	7
	Economics			4	29	10	71	14
	English Language A/A1			15	21	58	80	73
	English Language A2					2	100	2
	French Language B					2	100	2
	German Language B					1	100	1
	Geography					2	100	2
	Hindi Language B					1	100	1
	History: Americas			39	87	6	13	45
	History: European			1	33	2	67	3
	Mathematics			18	67	9	33	27
	Math with Further Math			1	100			1
	Physics			2	33	4	67	6
	Psychology					1	100	1

## Appendix C (continued)

Test Type	Test Name	Credit Eligibility						Total
		Incomplete		No Credit		Credit		
		N	%	N	%	N	%	
	Spanish Language A/A1					2	100	2
	Spanish Language A2			1	100			1
	Spanish Language B					15	100	15
Total				116	47	133	53	249
NLN MPII	Care of the Adult Client			1	4	22	96	23
	Care of Client during Childbearing			1	4	25	96	26
	Care of the Child					26	100	26
	Care of the Client with Mental Disorder					22	100	22
Total				2	2	95	98	97
Pennsylvania	Hindi Proficiency			3	4	79	96	82
UT CBE	Biology 211			2	67	1	33	3
	Biology 212			2	67	1	33	3
	Biology 302			1	100			1
	Biology 303			1	100			1
	Biology 304					1	100	1
	Chemistry 301			181	69	81	31	262
	Chemistry 302			5	18	23	82	28
	Chemistry 304K			17	65	9	35	26
	Chemistry 305			8	62	5	39	13

appendix continues

## Appendix C (continued)

Test Type	Test Name	Credit Eligibility						Total N
		Incomplete		No Credit		Credit		
		N	%	N	%	N	%	
	Chinese 506, 507, 412K, 412L			13	4	286	96	299
	Computer Science 303E					5	100	5
	Computer Science 307			2	67	1	33	3
	Computer Science 315			3	100			3
	Government 312L			12	50	12	50	24
	Hindi 612			6	18	28	82	34
	History 315K			15	43	20	57	35
	History 315L			7	20	28	80	35
	Japanese 506, 507, 412K, 412L			3	8	33	92	36
	Latin 506, 507, 311, 312K			12	71	5	29	17
	Management Information Systems 310			17	32	37	69	54
	Physics: Mechanics 301			3	75	1	25	4
	Physics: Mechanics 303K			18	55	15	46	33
	Physics: Mechanics 317K			2	100			2

## Appendix C (continued)

Test Type	Test Name	Credit Eligibility						Total N
		Incomplete		No Credit		Credit		
		N	%	N	%	N	%	
	Physics: Elec. & Mag. 303L			8	38	13	62	21
	Physics: Elec. & Mag. 316			3	75	1	25	4
	Physics: Elec. & Mag. 317L			1	50	1	50	2
	Russian					20	100	20
Total				342	35	627	65	969
UT Department	Individually Administered					234	100	234
UT Placement	GSP			796	100			796
	WP			403	100			403
	TASP Alt			2	100			2
Total				1201	100			1201
Wisconsin	French			55	14	335	86	390
	Spanish			220	8	2712	93	2932
Total				275	8	3047	92	3322