



The University of Texas at Austin
 1 University Station, G1800
 Austin, Texas 78712

Dr. Mark D. Hayward
 Director
www.prc.utexas.edu

DIRECTOR'S MESSAGE

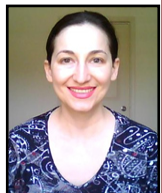
NOTHING is more important to our center's well-being than hiring outstanding faculty. The addition of Jason Abrevaya (Economics), Adina Batnitzky (Geography), Tetyana Pudrovska (Sociology) and Nestor Rodriguez (Sociology) underscore this point. As a group, they increase our center's disciplinary diversity, their research tackles fundamentally important social problems, and their work frequently blends conceptual and methodological approaches from multiple disciplines. Borrowing a phrase from the agricultural sciences, they represent a "bumper crop" of academic talent. An added bonus is that each of them is highly personable and a great colleague! Below, I've provided a quick synopsis of their work to introduce them to our community. Please join me in welcoming these outstanding scholars to our community.



Jason Abrevaya is a Professor of Economics, and his research is in the area of applied econometrics. Prior to joining the UT faculty, Jason was on the faculty at Purdue University (2002-07) and the University of Chicago (1996-2002). Jason has a wide range of substantive research interests, and much of his research speaks directly to demographic issues. What are the effects of maternal smoking and prenatal care on birth weight? Are Americans engaging in gender selection in their fertility behavior? What are the trends and determinants of smoking during pregnancy? Jason has also done some very creative work applying quantile regression to identify whether statistical associations vary across the distribution of the outcome. Illustrative of this approach, Jason showed in a paper published in *Empirical Economics* that factors such as race, education and prenatal care had a greater impact on birth weight at lower quantiles, while these covariates' impact declined at higher quantiles.



Adina Batnitzky is an Assistant Professor of Geography, and her research is in the area of social geography. Adina is completing a postdoctoral fellowship at Oxford University's School of Geography and the Environment where she is working with Dr. Linda McDowell on a project about "Gender, Ethnicity, Migration and Service Sector Employment." Prior to her postdoc, Adina received her Ph.D. in Sociology from Brown University, where she was an NICHD trainee in demography at the Population Studies Training Center. Adina's research focuses on issues of gender, migration, and health. Her dissertation research addressed the consequences of unequal divisions of household labor for women's obesity in Morocco, showing that non-egalitarian social roles had an enormous impact on women's health. Adina also has recently published a series of papers showing how migration influences the gendering of work lives.



Tetyana Pudrovska is an Assistant Professor of Sociology, and she is a social demographer with interests in aging and the life course, the family, and social epidemiology. Tetyana recently completed her Ph.D. at the University of Wisconsin-Madison, and her dissertation research made use of the Wisconsin Longitudinal Study to examine the psychological implications of parenthood in mid-life. A number of papers from her dissertation are already published or in press! A terrific paper based on her dissertation research was recently published in the *Journal of Marriage and the Family*. Tetyana has a wide range of research interests including early life influences on the psychological health of adults and genetically informed life course models of health - issues she introduced in her *JMF* paper.



Nestor Rodriguez is a Professor of Sociology, and his research is in the area of social demography, particularly international migration. Nestor is a native Texan and also received his Ph.D. from the University of Texas at Austin. Prior to joining the UT faculty, Nestor was on the faculty at the University of Houston where he also chaired Sociology for a number of years and served as director of UH's Center for Immigration Research. Nestor is one of the nation's experts on immigration from Latin America to the United States. In a recent series of articles, for example, Nestor has been investigating brutality and mortality associated with the undocumented migration. He is also developing a new project on the "The Social and Political Consequences of Migrant Remittances to Mexico, Guatemala, Peru, and Brazil." Nestor plans to field a comparative, longitudinal study across four sites to assess impacts of remittances on local and regional settings in four Latin American countries.

FACULTY SPOTLIGHT

Dr. **Robert Crosnoe**, associate professor of sociology is among six researchers nationwide to be appointed a William T. Grant Scholar, each of whom received \$300,000 over five years to support their research.



Dr. **Daniel Hamermesh** (Economics) was one of five faculty members awarded a President's Associates Teaching Excellence Award for 2007-2008 by the Office of the Executive Vice President and Provost at the University of Texas at Austin.

Dr. **Robert Hummer** (Sociology) was recently elected as Chair-Elect for the American Sociological Association (ASA) Section on Population.



Professor Aletha Huston's SRCD Presidential Address Published. In 2007, Dr. **Aletha Huston**—The Priscilla Pond Flawn Regents Professor of Child Development in the School of Human Ecology at UT and former Associate Director of the Population Research Center—completed her two-year term as president of the Society for Research in Child Development (SRCD), the world's largest professional association dedicated to the study of human development. As president, Dr. Huston oversaw a membership of nearly 6,000 researchers and practitioners from over 50 countries, encouraging the exchange of information among scientists and other professionals from multiple disciplines as well as the applications of scientific research. In March 2007, Dr. Huston gave a presidential address at the SRCD biennial convention in Boston. In this address, she shared the wisdom that she has accumulated in her groundbreaking career about the interplay between scientific research on families and children and public policies targeting families and children. This address was recently published in SRCD's flagship journal, *Child Development*.

PRC Director, **Mark Hayward**, was recently named a fellow of the Centennial Commission Chair in the Liberal Arts in recognition of his many contributions to the College. Hayward will receive \$35,000 annually to help support his research.



Dr. **Chandra Muller** and Dr. **Debra Umberson** were invited to join the Sociological Research Association (SRA). Founded in 1936, the SRA's mission is to recognize and promote excellence in sociological research. Currently, its membership numbers about 425. Invitations to membership are extended to a limited number of sociologist each year, based on their long-term careers of distinguished research.



Faculty Promotions

Andres Villarreal from Assistant to Associate Professor, Department of Sociology

Catherine Cubbin appointed as Associate Professor, School of Social Work

A Fond Farewell to Departing Faculty

The PRC community bids farewell to two of its members: **Chiquita Collins** (Sociology) and **Brian King** (Geography). Collins joined the Indiana Minority Health Coalition and King joined the faculty at Penn State University. We wish them well in their new endeavors and know that the PRC is forever a part of their professional heritage.

IN THE NEWS

John Mirowsky's (Sociology) study on the health advantages of creative work was featured by ScienceDaily.com and many daily newspapers.

Daniel Hamermesh (Economics) was quoted in the Dec. 22 issue of *The Economist* where he discussed the link between beauty and success, and a Jan. 30 *Washington Post* story about consumer food politics. The *New York Times* tapped Hamermesh's expertise in an April 26 story about companies making trade-offs to provide profitable service.

Norval Glenn (Sociology) was quoted in stories about marriage in the *Washington Post* and *Boston Globe*. The *New York Times* quoted Glenn for a Feb. 17 story on divorce.

The *New York Times* quoted Gretchen Ritter (Center for Women's and Gender Studies) in a Feb. 24 story about the Democratic primaries.

In a June 6 article in *Slate Magazine*, Daniel Hamermesh (Economics) discussed racial discrimination in the NBA.

USA Today tapped Kelly Raley's (Sociology) expertise on non-marital cohabitation for a June 8 story.

Why do so many evangelical teens become pregnant? The *New Yorker* tackles this question in the story "Red Sex, Blue Sex," which draws upon research from the book "Forbidden Fruit" by UT sociologist Mark Regnerus.

The Population Association of America (PAA) interviewed Robert Woodberry in its fall newsletter. Woodberry's research focuses on how colonialism and missionary activity shaped societies in the fall newsletter

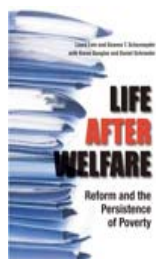
<http://www.popassoc.org/files/public/PAAAffairsFall08.pdf>

Catherine Riegler-Crumb's research featured on "Science Careers." Riegler-Crumb is quoted in an article about underrepresentation of African-American bachelor degrees in science, technology, engineering, and mathematics (STEM) Fields.

Each year, the UT Office of Public Affairs highlights Liberal Arts faculty, research and programs in feature stories on the University homepage. PRC researchers Norval Glenn, Mark Hayward, Kelly Raley and Debra Umberson were featured in "Til Death Do Us Part" outlining health consequences of marriage and divorce.

<http://www.utexas.edu/features/2008/marriage/>

RECENT BOOKS PUBLISHED BY PRC RESEARCHERS



"Life After Welfare: Reform and the Resistance to Poverty" by Laura Lein (Anthropology) and Deanna T. Schexnayder; with Karen Manges Douglas and Daniel G. Schroeder. University of Texas Press, 2007.

"Gendering Urban Space in the Middle East, South Asia, and Africa" edited by and Martina Rieker and Kamran Ali (Anthropology). Palgrave Macmillan, May 2008.

"Migration, Homeland, and Belonging in Eurasia" edited by Cynthia Buckley (Sociology), Blair A. Ruble and Erin Trough Hofmann. Woodrow Wilson Center Press, September 2008.

"Governance in the Americas: Decentralization, Democracy, and Subnational Government in Brazil, Mexico and the USA" by Robert H. Wilson (LBJ School), Peter Ward (Sociology), Peter Spink and Victoria Rodriguez. University of Notre Dame Press, March 2008.

NICHD Ruth L. Kirschstein Institutional Research Training Grant Successfully Renewed!

Due in large part to the successful placement of graduates, the PRC has successfully renewed its NICHD T32 training grant. This new cycle includes funding for 5 predoctoral and 2 postdoctoral scholars, an increase of one postdoctoral position over the previous cycle.

2008–2009 NICHD Predoctoral Trainees

Dustin Brown
Erin Hofmann
Jennifer Karas Montez
Kate Sullivan
Kari White



New PRC Postdoctoral Fellows Come to Austin!

- ◆ **Kimberly Daniels** received her Ph.D. in Sociology and Demography from Penn State in 2008. She is currently an NICHD-funded Ruth L. Kirschstein postdoctoral fellow at the Population Research Center, collaborating with Dr. Kelly Raley.
- ◆ **Conrad Hackett** received his Ph.D. in Sociology from Princeton in 2008. He is currently an NICHD-funded Ruth L. Kirschstein postdoctoral fellow at the Population Research Center, collaborating with Dr. Mark Regnerus.
- ◆ **Aprile Benner** received her Ph.D. in Education from the University of California, Los Angeles in 2007. After that, she completed a one-year postdoctoral research position in Human Development and Family Studies at UT Austin. She is currently a NICHD-funded Ruth L. Kirschstein NRSA postdoctoral fellow at the Population Research Center, collaborating with Drs. Robert Crosnoe, Aletha Huston, and Laura Lein.

Outstanding PRC Participation at PAA 2008

14 PRC faculty members and 44 PRC graduate students presented their research at the annual meeting of the Population Association of America (PAA), held April 17-20 in New Orleans. PRC graduate trainee, **Eunice Vargas Valle**, was named a PAA 2008 Annual Meeting Poster Session Winner for her poster entitled, "Religious Affiliation & Indigenous Fertility in Chiapas, Mexico."



Task force recommends gender equity plan

PRC researchers, **Gretchen Ritter** and **Chandra Muller**, were among several UT faculty appointed to The Gender Equity Task Force, created by the provost of The University of Texas at Austin in March 2007. The task force recently completed its report and has recommended that the university develop and enact a 5-10 year gender equity plan to "reduce or eliminate faculty gender inequity--specifically with respect to hiring, promotion, salaries and governance."

The report found gender gaps at The University of Texas at Austin in areas of faculty representation, promotion and attrition for faculty advancing through the ranks, salary and leadership. It also noted concerns about the "climate" for women faculty on campus, departmental governance structures, a lack of clear knowledge by faculty and administrators about "family-friendly policies" on campus, and a need to improve the situation of senior women faculty members.

The Gender Equity Task Force was convened at a moment when concerns about gender equity in higher education had risen nationally. Many of The University of Texas at Austin's peer institutions over the last decade have conducted studies similar to the one conducted by the task force, finding similar problems and issues that were addressed to result in "substantial progress in recent years in increasing the level of gender equity within their faculties," the report said.

Read the final report of the Gender Equity Task Force at
http://www.utexas.edu/news/attach/2008/3133_Gender_Equity_Report.pdf

STUDENT NEWS



Research Experience for Undergraduates (REU) Program

The Center's Research Experience for Undergraduates (REU) program, funded by the National Science Foundation, is still going strong. Ten students (4 from UT; 6 from outside institutions) participated in the summer 2008 program. During the summer, these 10 very talented students took a formal course in the social demography of minority groups, learned statistical computing programs, and wrote an empirical research paper on a topic of their choosing. All 10 participants attended the annual meeting of the Southern Demographic Association held October 30th -November 1st in Greenville, South Carolina and presented papers that summarize the results of their independent research projects from the summer.

Watch for the call for our 20th annual REU Summer Program on our website, www.prc.utexas.edu. Please encourage talented undergraduate students to apply.

2008 REU SDA Participant Papers

Research on Health and Mortality

Does This Make Me Look Fat?: Examining Race and Gender Differences in Adolescent Body Image
Eric Williams, Grambling State University

Childhood Asthma and School Absenteeism: Results from the 2007 National Health Interview Survey
Leah Greenblum, University of Florida

Black Women and Mammograms: Are Black Women Less Likely to Undergo a Mammogram?
Lisa Newhouse, University of Texas at Austin

Paternal Involvement and Infant Mortality
Deva Cats-Baril, University of Texas at Austin

The Impact of Polygynous Marriage Type on the Health Outcomes of Children in Kenya
Anshul Kumar, Cornell University

Research on Social Stratification and Differentiation

Explaining the Rise of Religious Nonaffiliation in American Society, 1974-2006
Mazen Elfakhani, University of Texas at Austin

Assimilation, Gender, and Political Participation: The Mexican American Case
Marcelo Bohrt-Seeghers, University of Texas at Austin

The Influence of Machismo and Marianismo upon Latino Sex-Role Beliefs
Christopher Rodriguez, Texas Lutheran University

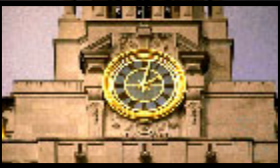
Socioeconomic Attainments of South Asian Americans
Neel Agarwal, Case Western Reserve University

Which Parent Matters Most for Child Educational Attainment?: An Analysis by Ethnicity and Gender
Saskia DeVries, Brown University

2008 REU Student Mazen Elfakhani Receives Best Paper Award at SDA

2008 REU student Mazen Elfakhani received the award for best undergraduate paper at the annual meeting of the Southern Demographic Association (SDA), held recently in Greenville, South Carolina.

Mazen Elfakhani, an undergraduate student at the University of Texas at Austin, was a Research Experience for Undergraduate (REU) participant at the PRC during summer 2008. His paper, entitled "Explaining the Rise of Religious Nonaffiliation in American Society, 1974-2006", uses pooled data from the General Social Survey to identify the social factors driving the rise of religious nonaffiliation. From 1974 to 1990, roughly 7 percent of Americans reported having no religious preference; but by 2006, this demographic had more than doubled to 16.5 percent. Mazen analyzed the effects of cohort replacement, denomination, family, education, confidence in institutions, political/moral liberalism, and social tolerance on this trend. His main findings were that in addition to generational differences, increased non-nuclear family arrangements had contributed most significantly to this trend, as well as an increased proportion of Americans being raised in no religious tradition.



GRADUATE RESEARCH TRAINEES

Jeremy Uecker was awarded the 2008 Robert J. McNamara Student Paper Award from the Association for the Sociology of Religion (ASR) for his paper, "Religious and Spiritual Responses to 9/11: Evidence from the Add Health Sample." Jeremy was also awarded a 2008-2009 Graduate School Continuing Fellowship from the University of Texas.

Jennifer Karas Montez was recently elected as the Student Representative to the American Sociological Association's Section on Aging and Life Course. During her two-year term, Jennifer will represent the interests of student members in section activities, services and communications.

Nicole Angotti received a 2008-2009 Doctoral Dissertation Improvement Grant from the National Science Foundation for her dissertation, "Testing Difference: The Cultural Diffusion of Western HIV Testing Norms in sub-Saharan Africa."

Erin Hamilton received the 2008-2009 Bess Heflin Endowment Fellowship from the University of Texas, Office of Graduate Studies.

Jeremiah Spence founded and is the current editor of the online, academic, peer-reviewed journal: the *Journal of Virtual Worlds Research* (<http://jvwresearch.org>).

Meredith Worthen was recently recognized with the Future Faculty Grants Award from the Academic Keys Foundation in the amount of \$1,000. Meredith also received 2nd Place in the American Society of Criminology Gene Carte Student Paper Competition and the award prize of \$300 for her paper, "Too Thin or Too Fat? The Effects of Body Dissatisfaction on Involvement in Delinquency." These awards are given to recognize outstanding scholarly work of students in the field of criminology.

The First Doug Forbes Funds Awarded

Thank you for your contributions to the Doug Forbes Fund for Graduate Training and Research. It is due to your generous gifts that the PRC was able to award five graduate research awards. The awards are intended to provide support for activities that directly contribute to a student's development of their research agenda.

The 2007-2008 Doug Forbes Fund Awardees

Nicole Angotti - Testing Difference: The Cultural Diffusion of Western HIV Testing Norms in sub-Saharan Africa

Jennifer Montez - Integrating Biomarkers into Population-Based Research

Ana Paula Verona - Fertility of Indigenous Women in Brazil

Kari White - Turkish Immigrant Fertility in Germany: Reconsidering Assimilation and Adaptation Hypotheses

Hirotooshi Yoshioka - Indigenous Transnationalism and the Emergence of Panethnicity in Guatemala and Nicaragua: Does Indigenous International Migration Menace Neoliberal Multiculturalism?



RECENT GRADUATE PLACEMENTS



2007-2008 PRC Graduate Trainee Placements

Jennifer Barrett PhD Sociology, Assistant Professor, Loyola University

Umut Bespinar-Ekici PhD Sociology, Middle East Technical University, Turkey

Amy Burdette PhD Sociology, Assistant Professor, Mississippi State University

Samuel Echevarria-Cruz PhD Sociology, Research Associate, Educational Administration, University of Texas

Sinikka Elliott PhD Sociology, Assistant Professor, North Carolina State University

Sonia Frias PhD Sociology, Centro Regional de Investigaciones Multidisciplinarias (CRIM), Universidad Nacional Autonoma de Mexico

Chang-Hwan Kim PhD Sociology, Assistant Professor, University of Kansas

Joongbaeck Kim PhD Sociology, Assistant Professor, University of Tennessee

Cathy Liu PhD Sociology, Assistant Professor, Michigan State University

Belinda Needham PhD Sociology, Assistant Professor, University of Alabama-Birmingham

Jenny Pearson PhD Sociology, Assistant Professor, Wichita State University

Michael Roemer PhD Sociology, Assistant Professor, Ball State University

Heeju Shin PhD Sociology, Assistant Professor, University of Wisconsin-Milwaukee

Margaret Vaaler PhD Sociology, Research Specialist, Maternal and Child Health Unit, Texas Department of State Health Services

Lindsay Wilkinson PhD Sociology, Assistant Professor, Portland State University

Haebong Woo PhD Sociology, Research Associate, National Pension Institute, Korea

Hyeyoung Woo PhD Sociology, Assistant Professor, Wichita State University



**WE CHANGE PEOPLE.
THEY CHANGE THE WORLD.**



**THE UNIVERSITY OF TEXAS
AT AUSTIN**

GIFT FUNDS FOR PRC ENDOWED PROFESSORSHIP



W. Parker Frisbie Fund for Excellence

Professor W. Parker Frisbie retired in 2008 after 36 years in the Department of Sociology and the Population Research Center. Because his extraordinary scholarship and mentoring have contributed so much to our community, we plan to honor Parker's career by creating a \$25,000 endowment called the *W. Parker Frisbie Fund for Excellence*. Housed within the PRC, the fund will be dedicated to supporting outstanding PRC faculty and graduate student research. Although the initial financial goal is modest, our long-range plan is to raise enough funds to transform the excellence fund into a PRC endowed professorship.

Make a *W. Parker Frisbie Fund for Excellence* gift online at <https://utdirect.utexas.edu/nlogon/vip/ogif.WBX>.

Select "Liberal Arts, College of" in the first pull down box and then select "Population Research Center".

Please type "*W. Parker Frisbie Fund for Excellence*" in the text box.

If you prefer to mail your gift, please make your check payable to The University of Texas at Austin and mail it to:

Attention: Development
 W. Parker Frisbie Fund for Excellence
 College of Liberal Arts/G6300
 The University of Texas at Austin
 PO Box 7727
 Austin, TX 78713-9953

GIFT FUNDS FOR GRADUATE TRAINING

Doug Forbes Fund

In addition, you can invest in the *Doug Forbes Fund*. Named for our colleague and UT alumnus, Doug Forbes, the *Fund* will provide fellowship support for graduate students to attend professional meetings and conferences such as the Population Association of America. It reflects Doug's long-standing commitment to student mentorship and professional development. We hope you will contribute to this fund in recognition of Doug's dedication and contributions as a distinguished alumnus who has always shown an immense concern for teaching and the welfare of students. Through your gifts to the Doug Forbes Fund, we can help future student pursue research and service in those areas that mean so much to Doug.

Make a *Doug Forbes Fund* gift online at <https://utdirect.utexas.edu/nlogon/vip/ogif.WBX>.

Select "Liberal Arts, College of" in the first pull down box and then select "Population Research Center".

Please type "*Doug Forbes Fund for Excellence*" in the text box.

If you prefer to mail your gift, please make your check payable to The University of Texas at Austin and mail it to:

Attention: Development
 Doug Forbes Fund
 College of Liberal Arts/G6300
 The University of Texas at Austin
 PO Box 7727
 Austin, TX 78713-9953



Many thanks for helping us support the next generation of PRC graduate students.