

Population Change in Texas: Implications for Human and Socioeconomic Resources in the 21st Century

by

Steve H. Murdock

**Department of Rural Sociology
Texas Agricultural Experiment Station
Texas A&M University System**

Major Demographic Trends Affecting the Future

- **Change in Rates and Sources of Population Growth**
- **Increase in the Non-Anglo Population**
- **Aging of the Population**

Total Population Change

Total Population and Percent Population Change in Texas and the United States, 1850-2000

Year	Total Population		Percent Change	
	Texas	U.S.	Texas	U.S.
1850	212,592	23,191,876	---	---
1860	604,215	31,443,321	184.2	35.6
1870	818,579	39,818,449	35.5	26.6
1880	1,591,749	50,155,783	94.5	26.0
1890	2,235,527	62,947,714	40.4	25.5
1900	3,048,710	75,994,575	36.4	20.7
1910	3,896,542	91,972,266	27.8	21.0
1920	4,663,228	105,710,620	19.7	14.9
1930	5,824,715	122,775,046	24.9	16.1
1940	6,414,824	131,669,275	10.1	7.2
1950	7,711,194	150,697,361	20.2	14.5
1960	9,579,677	179,323,175	24.2	19.0
1970	11,196,730	203,302,031	16.9	13.4
1980	14,229,191	226,545,805	27.1	11.4
1990	16,986,510	248,709,873	19.4	9.8
2000*	20,851,820	281,421,906	22.8	13.2

* All values are for the indicated census year.

Total Population and Components of Population Change in Texas, 1950-2000

Year	Population	Numerical Change	Natural Increase	Net Migration	Percent Change	Percent Change Due to	
						Natural Increase	Net Migration
1950	7,711,194	—	—	—	—	—	—
1960	9,579,677	1,868,483	1,754,652	113,831	24.23	93.91	6.09
1970	11,196,730	1,617,053	1,402,683	214,370	16.88	86.74	13.26
1980	14,229,191	3,032,461	1,260,794	1,771,667	27.08	41.58	58.42
1990	16,986,510	2,757,319	1,815,670	941,649	19.38	65.85	34.15
2000	20,851,820	3,865,310	1,919,281	1,946,029	22.76	49.65	50.35

Ten Fastest Growing States in Numerical Terms in the United States, 1990-2000

State	1990 Population*	2000 Population*	Numerical Change 1990-2000	Percent Population Change 1990-2000
California	29,760,021	33,871,648	4,111,627	13.8
Texas	16,986,510	20,851,820	3,865,310	22.8
Florida	12,937,926	15,982,378	3,044,452	23.5
Georgia	6,478,216	8,186,453	1,708,237	26.4
Arizona	3,665,228	5,130,632	1,465,404	40.0
North Carolina	6,628,637	8,049,313	1,420,676	21.4
Washington	4,866,692	5,894,121	1,027,429	21.1
Colorado	3,294,394	4,301,261	1,006,867	30.6
Illinois	11,430,602	12,419,293	988,691	8.6
New York	17,990,455	18,976,457	986,002	5.5

* Population values are decennial census counts for April 1 of the year indicated

Ten Fastest Growing States in Percentage Terms in the United States, 1990-2000

State	1990 Population*	2000 Population*	Numerical Change 1990-2000	Percent Population Change 1990-2000
Nevada	1,201,833	1,998,257	796,424	66.3
Arizona	3,665,228	5,130,632	1,465,404	40.0
Colorado	3,294,394	4,301,261	1,006,867	30.6
Utah	1,722,850	2,233,169	510,319	29.6
Idaho	1,006,749	1,293,953	287,204	28.5
Georgia	6,478,216	8,186,453	1,708,237	26.4
Florida	12,937,926	15,982,378	3,044,452	23.5
Texas	16,986,510	20,851,820	3,865,310	22.8
North Carolina	6,628,637	8,049,313	1,420,676	21.4
Washington	4,866,692	5,894,121	1,027,429	21.1

* Population values are decennial census counts for April 1 of the year indicated

Ten Largest States in United States by Population Size in 2000 Ranked by Population Size in 2000

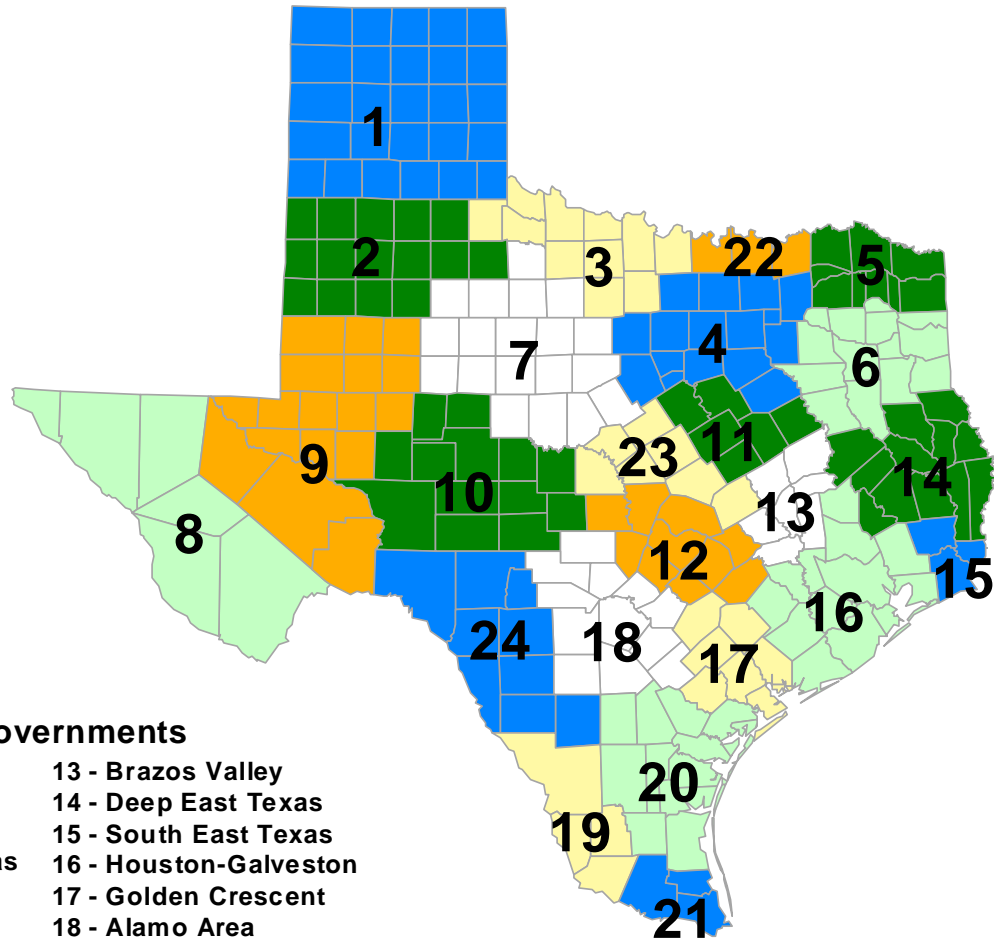
State	1990 Population*	2000 Population*	Numerical Change 1990-2000	Percent Change 1990-2000
California	29,760,021	33,871,648	4,111,627	13.8
Texas	16,986,510	20,851,820	3,865,310	22.8
New York	17,990,455	18,976,457	986,002	5.5
Florida	12,937,926	15,982,378	3,044,452	23.5
Illinois	11,430,602	12,419,293	988,691	8.6
Pennsylvania	11,881,643	12,281,054	399,411	3.4
Ohio	10,847,115	11,353,140	506,025	4.7
Michigan	9,295,297	9,938,444	643,147	6.9
New Jersey	7,730,188	8,414,350	684,162	8.9
Georgia	6,478,216	8,186,453	1,708,237	26.4

* Population values are decennial census counts for April 1 of the year indicated

Number of Areas in Texas with 1990-2000 Population Increases in Total Population and Populations from Each Racial/Ethnic Group

	Total	Anglo	Black	Hispanic	Other
Councils of Governments (N=24)	24 (100.0%)	15 (62.5%)	23 (95.8%)	24 (100.0%)	23 (95.8%)
Metropolitan Areas (N=27)	27 (100.0%)	23 (85.2%)	26 (96.3%)	27 (100.0%)	27 (100.0%)
Counties	186 (73.2%)	143 (56.3%)	165 (68.8%)	227 (89.4%)	201 (80.1%)
N=	(254)	(254)	(240)	(254)	((251)
Places	945 (74.0%)	704 (56.0%)	601 (61.5%)	1,082 (88.0%)	783 (74.1%)
N=	(1,277)	(1,257)	(978)	(1,229)	(1,057)

Councils of Governments in Texas



Councils of Governments

- | | |
|-------------------------|------------------------------|
| 1 - Panhandle | 13 - Brazos Valley |
| 2 - South Plains | 14 - Deep East Texas |
| 3 - Nortex | 15 - South East Texas |
| 4 - North Central Texas | 16 - Houston-Galveston |
| 5 - Ark-Tex | 17 - Golden Crescent |
| 6 - East Texas | 18 - Alamo Area |
| 7 - West Central Texas | 19 - South Texas |
| 8 - Rio Grande | 20 - Coastal Bend |
| 9 - Permian Basin | 21 - Lower Rio Grande Valley |
| 10 - Concho Valley | 22 - Texoma |
| 11 - Heart of Texas | 23 - Central Texas |
| 12 - Capital Area | 24 - Middle Rio Grande |

Racial/Ethnic Change in Texas

Texas Rank Among States on Selected Characteristics of Race/Ethnicity Groups

Group	Texas Value	Texas Rank	Comparison Areas
<u>By Size in 2000</u>			
Anglo	11,074,716	3	California; 17.0 million New York; 12.5 million
Black	2,421,653	2	New York; 2.9 million
Hispanic	6,669,666	2	California; 11.0 million
Other	685,785	4	California; 4.2 million New York; 1.2 million Hawaii; 733,000

Texas Rank Among States on Selected Characteristics of Race/Ethnicity Groups

Group	Texas Value	Texas Rank	Comparison Areas
<u>By Numerical Change, 1990-2000</u>			
Anglo	783,036	2	Florida; 1.1 million
Black	445,293	3	Florida; 665,000 Georgia; 627,000
Hispanic	2,329,761	2	California; 3.3 million
Other	307,220	3	California; 1.2 million New York; 493,000

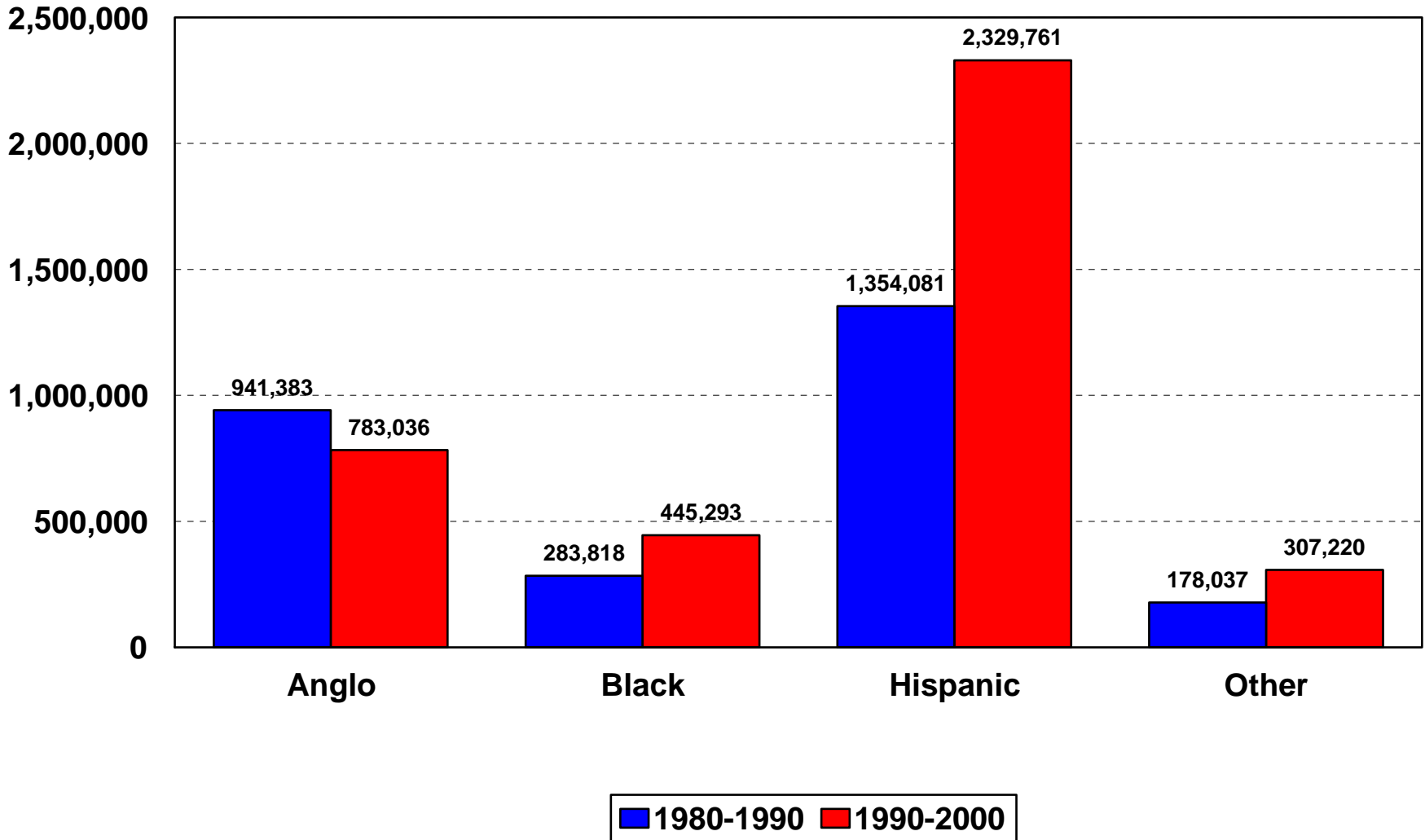
Anglo Population For States in the United States in 1990 and 2000 Ranked by Total Population Size in 2000

State	1990 Anglo Population	2000 Anglo Population	Numerical Change 1990-2000	Percent Change 1990-2000
California	17,029,126	16,393,491	-635,635	-3.73
Texas	10,291,680	11,074,716	783,036	7.61
New York	12,460,189	11,921,371	-538,818	-4.32
Florida	9,475,326	10,568,868	1,093,542	11.54
Illinois	8,550,208	8,514,486	-35,722	-0.42
Pennsylvania	10,422,058	10,373,049	-49,009	-0.47
Ohio	9,444,622	9,604,550	159,928	1.69
Michigan	7,649,951	7,906,629	256,678	3.36
New Jersey	5,718,966	5,625,346	-93,620	-1.64
Georgia	4,543,425	5,170,762	627,337	13.81

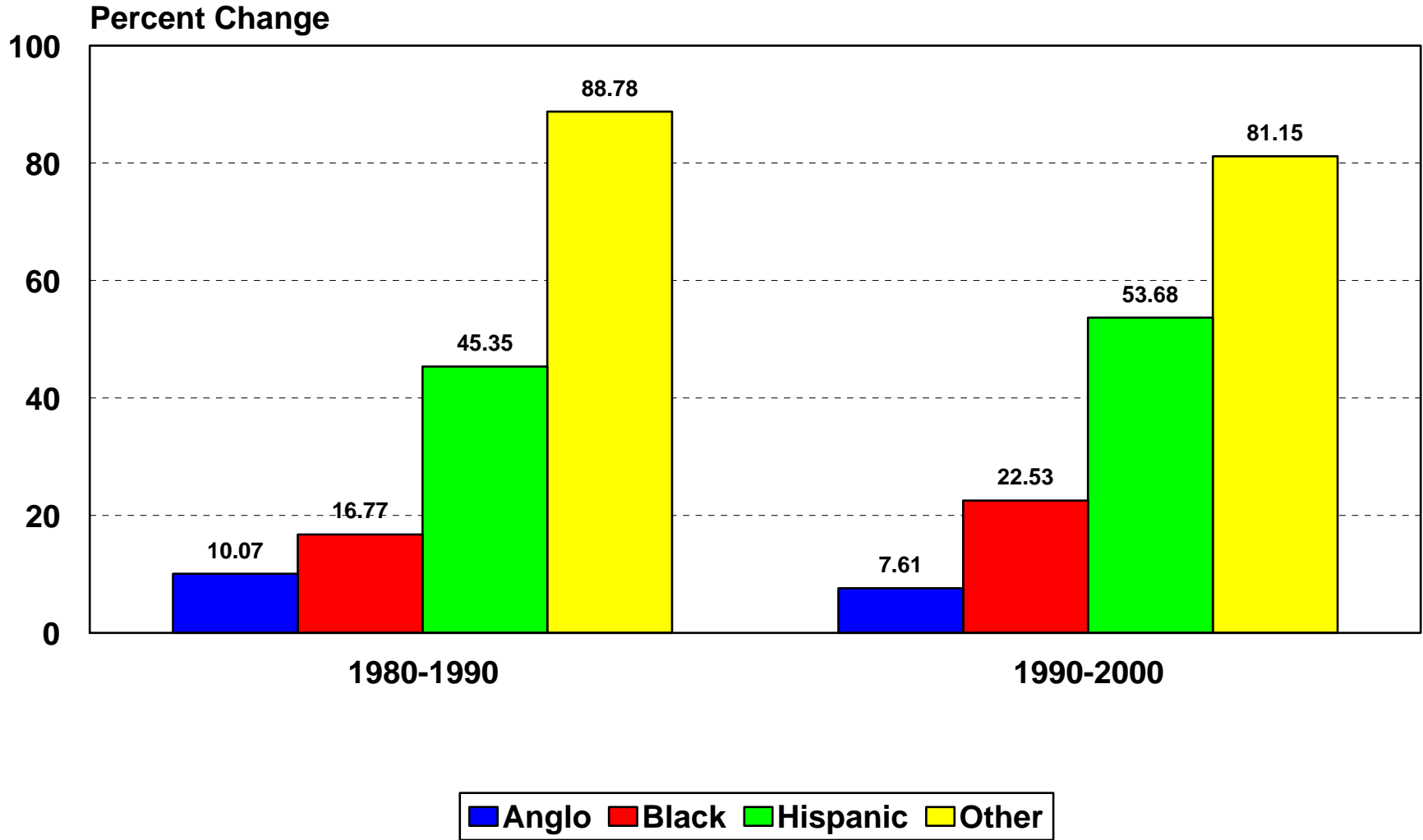
Texas Rank Among States on Selected Characteristics of Race/Ethnicity Groups

Group	Texas Value	Texas Rank	Comparison Areas
<u>By Percent of Total Population in 2000</u>			
Anglo	53.1	47	Ahead of Hawaii; 30.1 Ahead of New Mexico; 45.7 Ahead of California; 48.4
Black	11.6	18	Highest is Mississippi; 36.4 Lowest is Montana; 0.4
Hispanic	32.0	3	New Mexico; 42.1 California; 32.4
Other	3.3	22	Highest is Hawaii; 60.5 Lowest is West Virginia; 0.9

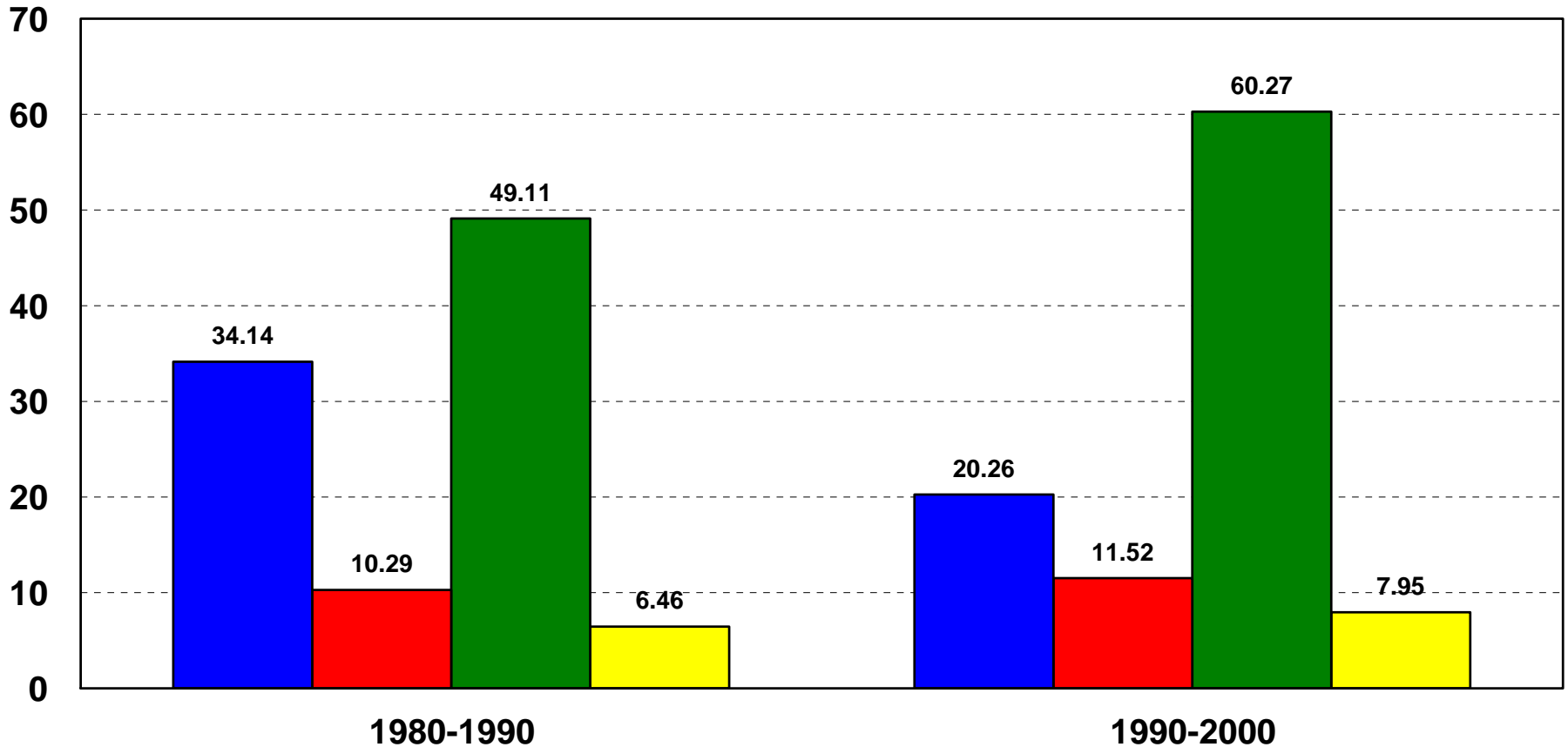
Numerical Change in Population by Race/Ethnicity in Texas for 1980-1990 and 1990-2000



Percent Change in Population by Race/Ethnicity for 1980-1990 and 1990-2000 in Texas



Proportion of Net Population Change Attributable to Each Race/Ethnicity Group in Texas for 1980-1990 and 1990-2000

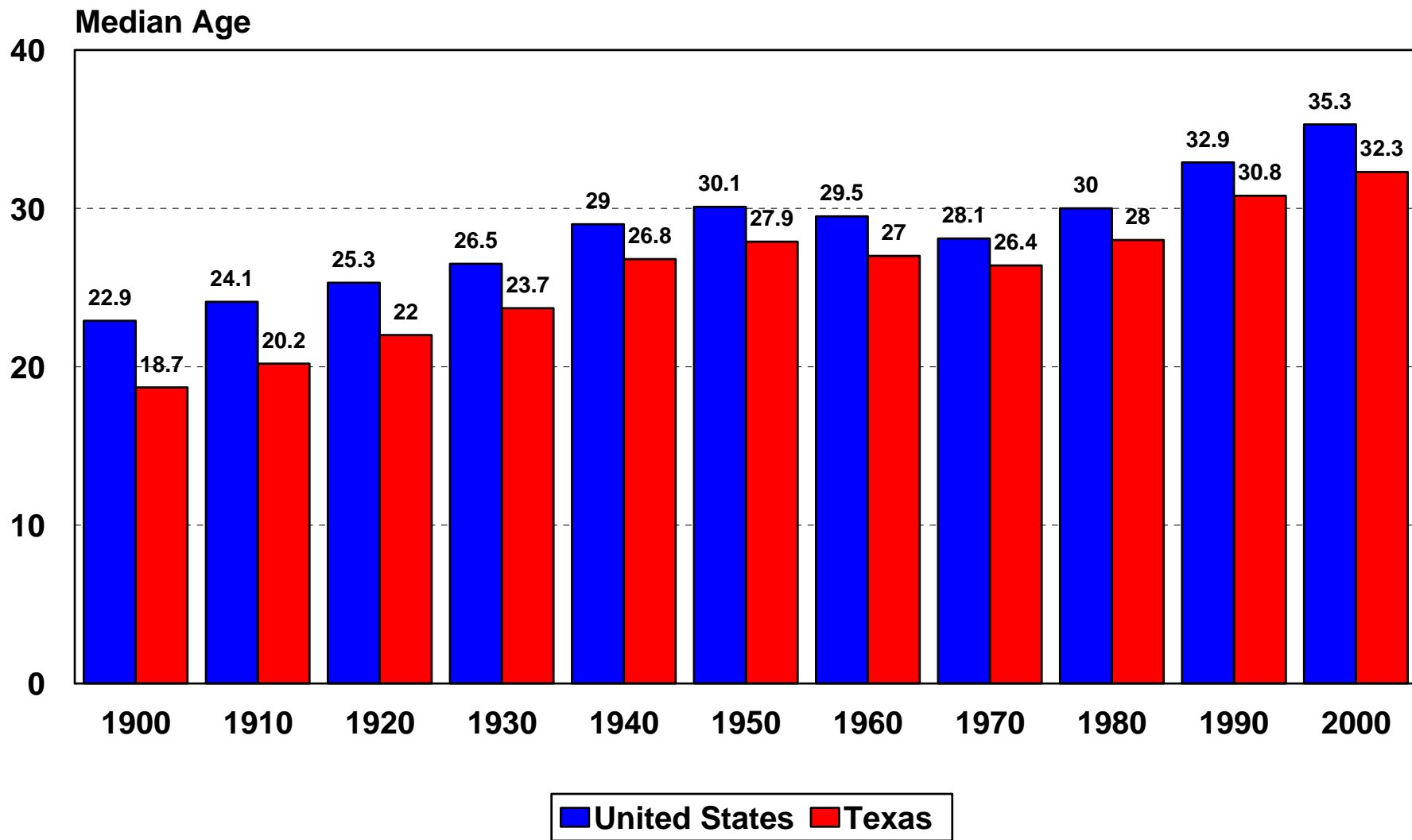


■ Anglo ■ Black ■ Hispanic ■ Other

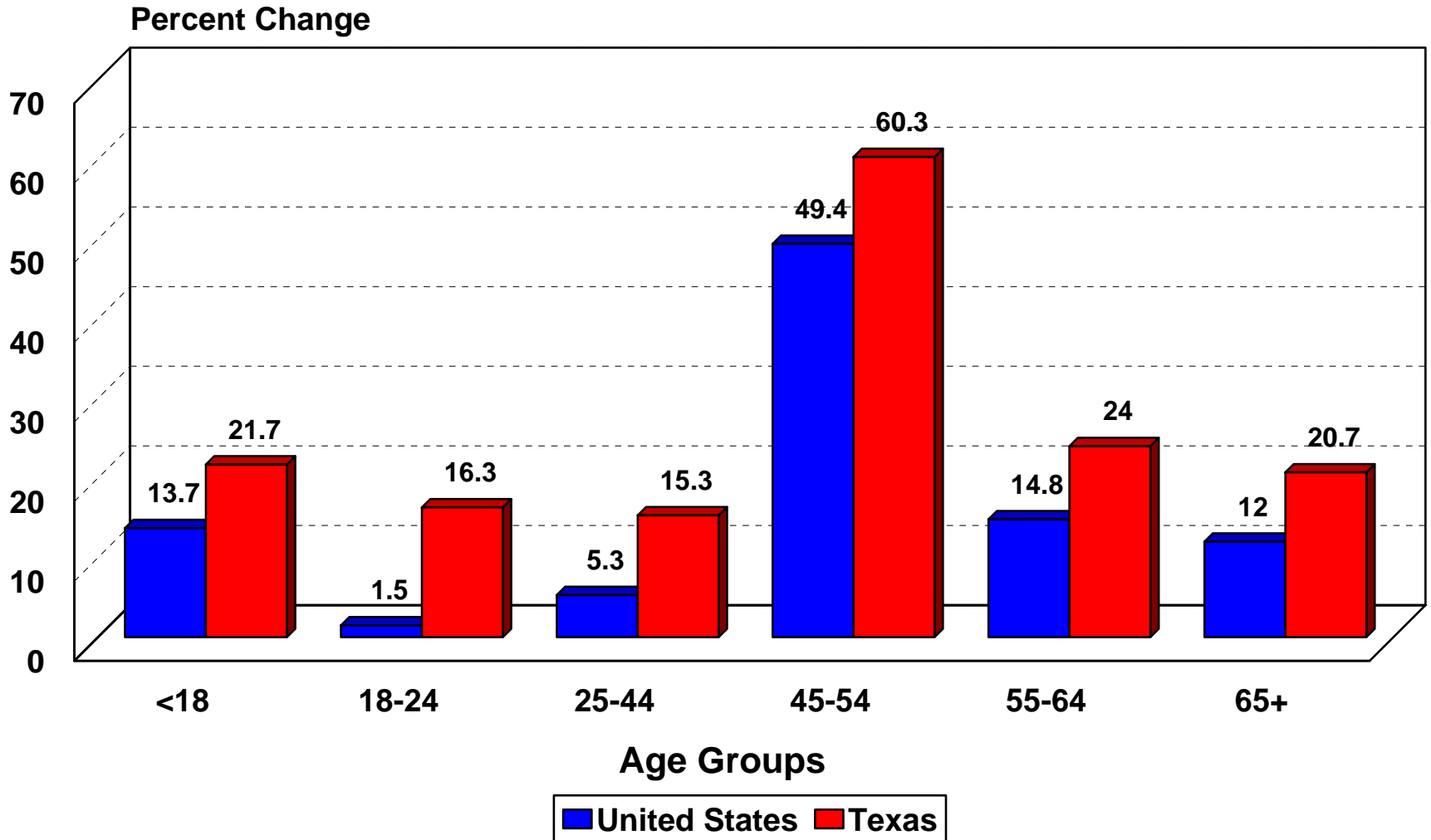
Major Changes in Population Composition (Characteristics)

- **Age**

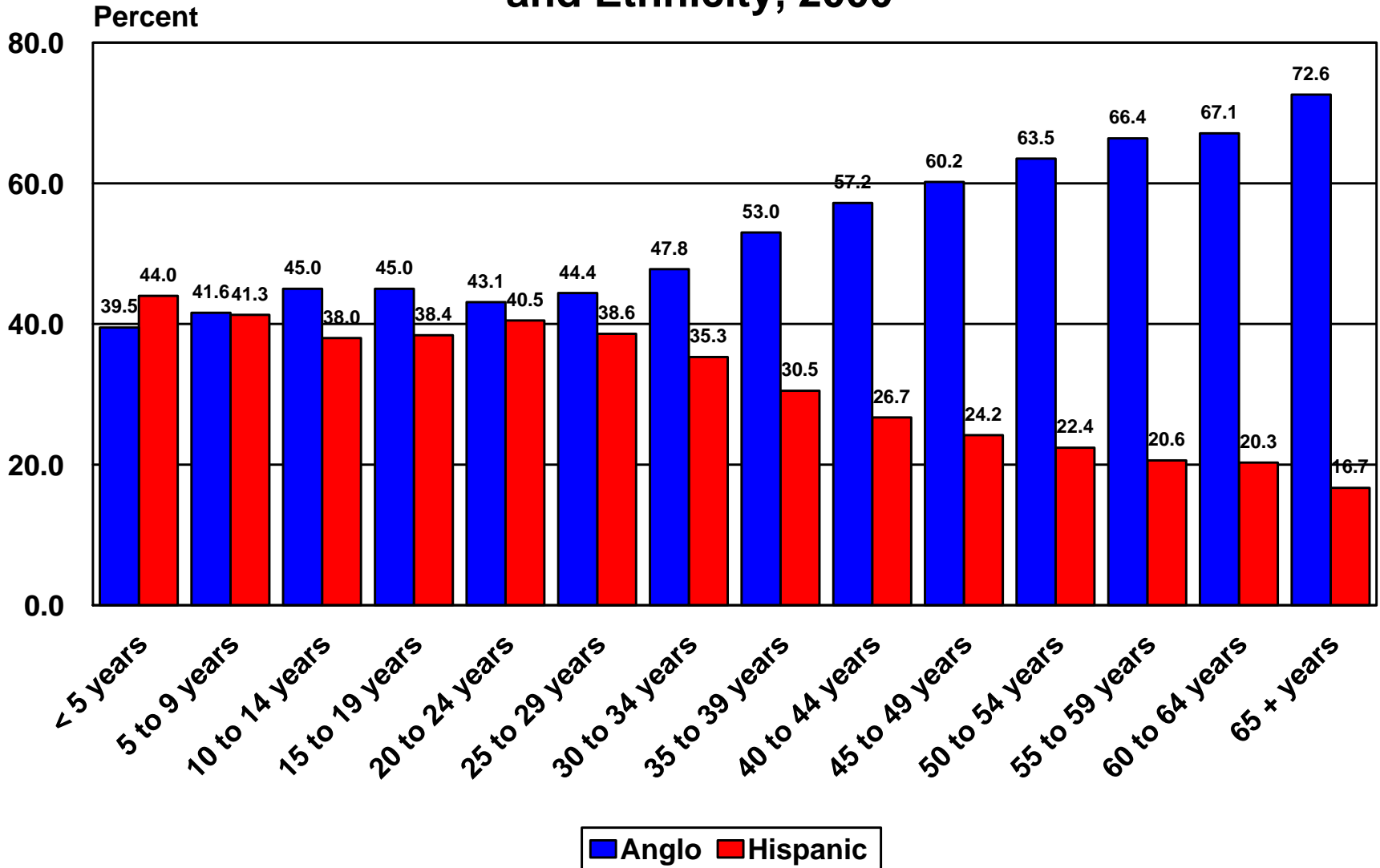
Median Age in the United States and Texas, 1900-2000



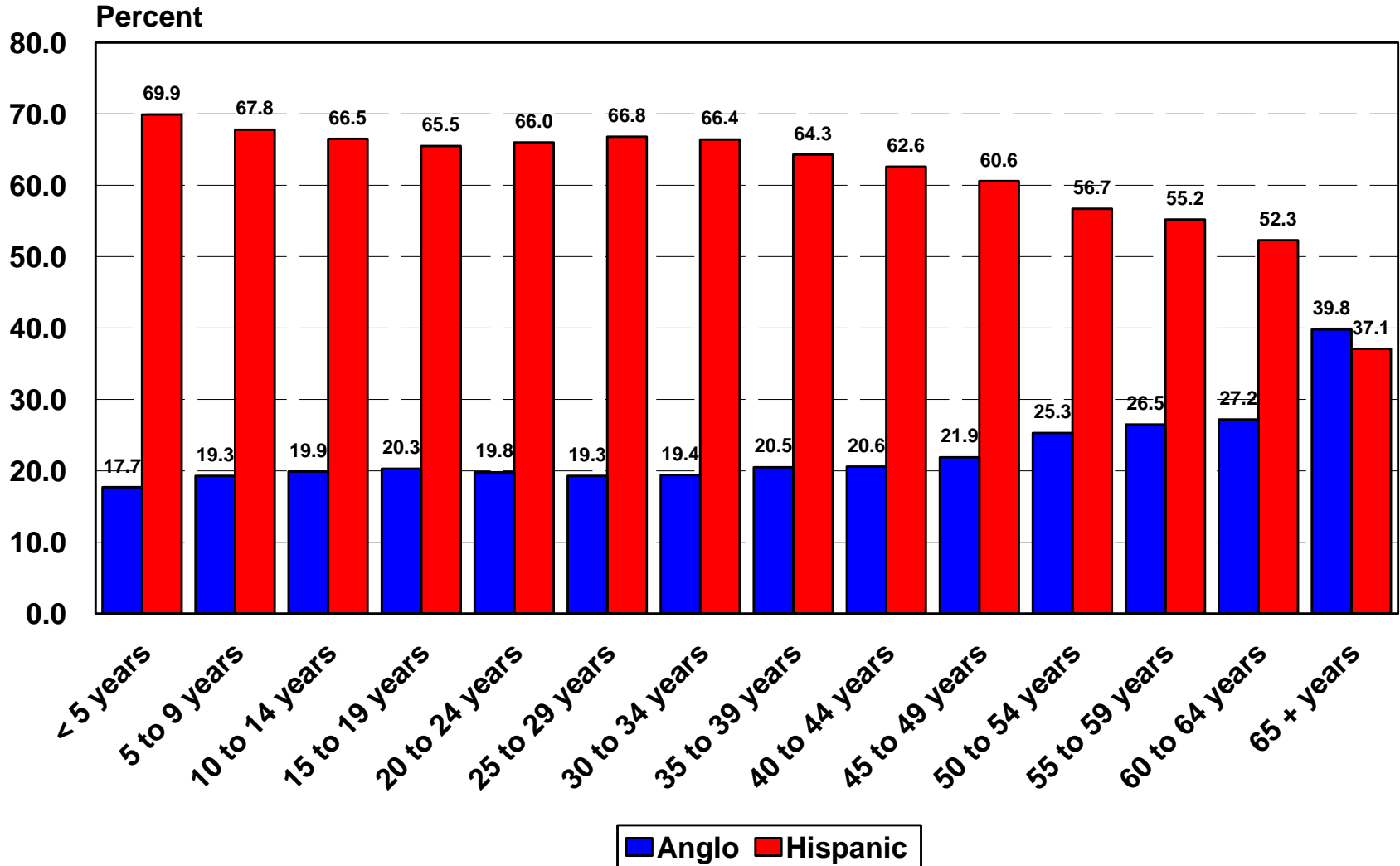
Percent Change in Population by Age Group in the United States and Texas, 1990-2000



Percent of Texas Population by Age Group and Ethnicity, 2000



Percent of Texas Population by Age Group and Ethnicity, 2040*



* Projections are shown for the 1.0 scenario

PROJECTIONS

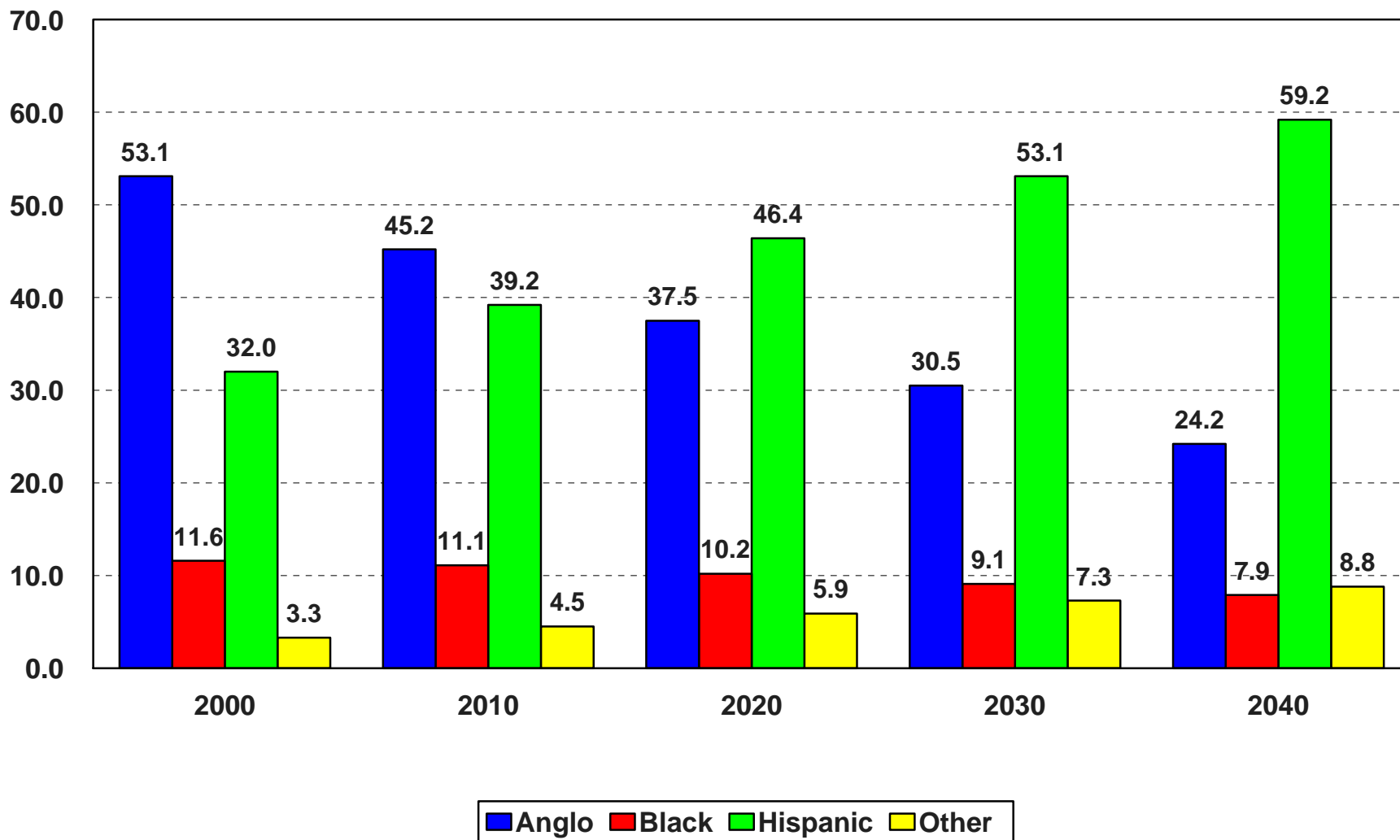
Population in Texas by Race/Ethnicity in 2000 and Projections of the Population in Texas by Race/Ethnicity from 2010 to 2040

Year	Anglo	Black	Hispanic	Other	Total
2000	11,074,716	2,421,653	6,669,666	685,785	20,851,820
<u>Assuming Zero Migration</u>					
2010	11,292,858	2,604,162	7,986,640	776,088	22,659,748
2020	11,320,857	2,727,365	9,220,971	828,786	24,097,979
2030	11,086,475	2,756,470	10,406,060	856,437	25,105,442
2040	10,599,190	2,697,888	11,408,456	856,047	25,561,581
<u>Assuming Rates of Net Migration Equal to One-Half of 1990-2000</u>					
2010	11,494,673	2,730,659	8,999,827	953,348	24,178,507
2020	11,735,043	3,004,173	11,742,820	1,256,342	27,738,378
2030	11,701,065	3,191,230	14,900,692	1,596,578	31,389,565
2040	11,382,992	3,283,413	18,391,333	1,954,592	35,012,330
<u>Assuming Rates of Net Migration Equal to 1990-2000</u>					
2010	11,700,471	2,863,397	10,164,378	1,168,772	25,897,018
2020	12,165,004	3,309,068	15,056,028	1,897,182	32,427,282
2030	12,350,427	3,694,283	21,533,219	2,960,361	40,538,290
2040	12,225,486	3,995,349	29,926,210	4,435,916	50,582,961

**Percent Change for Selected Time Periods for Projected
Population in Texas by Racial/Ethnic Status Under Alternative
Assumptions of Migration Scenarios**

Year	Anglo	Black	Hispanic	Other	Total
<u>Assuming Zero Migration</u>					
2000-2010	2.0	7.5	19.7	13.2	8.7
2010-2020	0.2	4.7	15.5	6.8	6.3
2020-2030	-2.1	1.1	12.9	3.3	4.2
2030-2040	-4.4	-2.1	9.6	-0.0	1.8
2000-2040	-4.3	11.4	71.0	24.8	22.6
<u>Assuming Rates of Net Migration Equal to One-Half of 1990-2000</u>					
2000-2010	3.8	12.8	34.9	39.0	16.0
2010-2020	2.1	10.0	30.5	31.8	14.7
2020-2030	-0.3	6.2	26.9	27.1	13.2
2030-2040	-2.7	2.9	23.4	22.4	11.5
2000-2040	2.8	35.6	175.7	185.0	67.9
<u>Assuming Rates of Net Migration Equal to 1990-2000</u>					
2000-2010	5.7	18.2	52.4	70.4	24.2
2010-2020	4.0	15.6	48.1	62.3	25.2
2020-2030	1.5	11.6	43.0	56.0	25.0
2030-2040	-1.0	8.1	39.0	49.8	24.8
2000-2040	10.4	65.0	348.7	546.8	142.6

Projected Proportion of Population by Race/Ethnicity in Texas, 2000-2040*

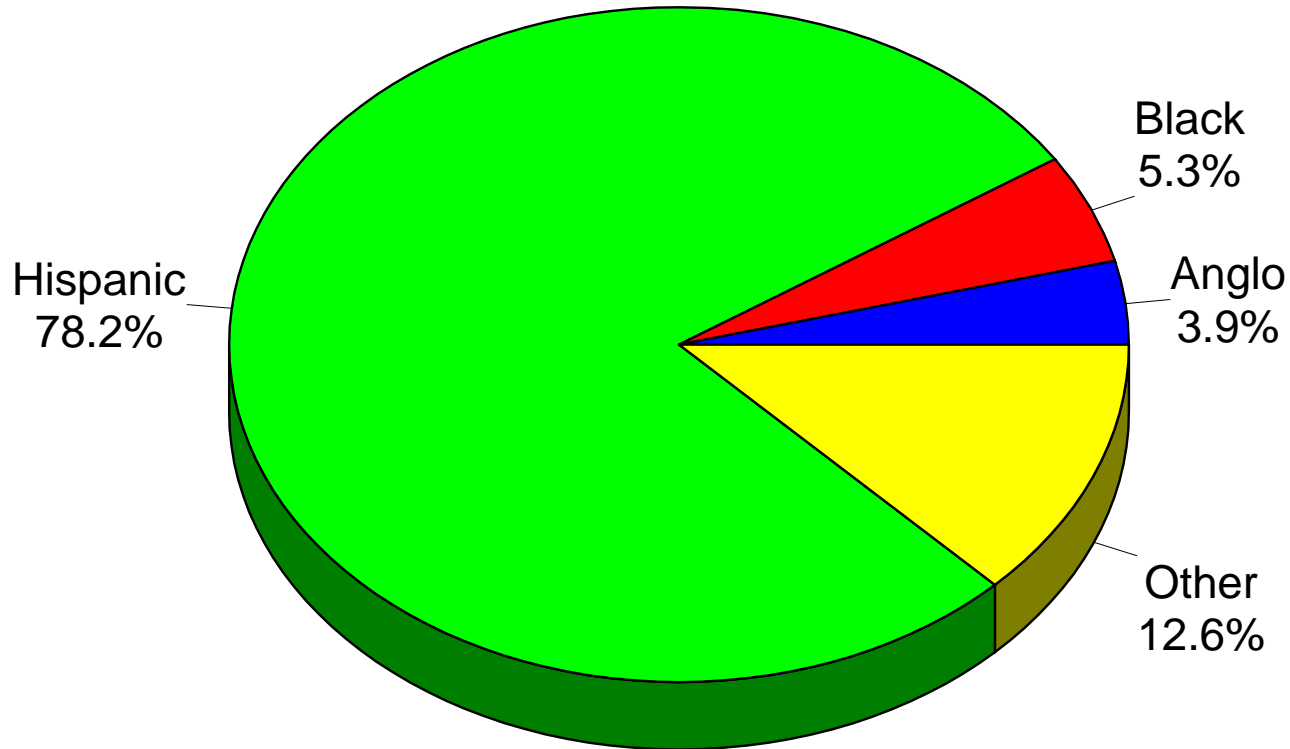


**Percent of the Projections of the Population by
Race/Ethnicity and Age Groups in Texas from 2000-2040
Under Alternative Migration Scenarios**

Age Group	Anglo	Black	Hispanic	Other	Total
<u>All Scenarios</u>					
<u>2000</u>					
<18	23.0	31.7	35.8	26.1	28.2
18-24	8.8	11.2	13.2	11.2	10.6
25-44	30.1	32.1	31.8	37.7	31.1
45-64	24.4	17.7	14.0	20.1	20.2
65+	13.7	7.3	5.2	4.9	9.9
<u>Assuming Zero Migration</u>					
<u>2020</u>					
<18	19.9	24.1	31.4	20.7	24.8
18-24	8.1	10.2	11.1	9.1	9.6
25-44	24.9	29.8	27.2	24.4	26.3
45-64	27.6	25.3	21.8	30.2	25.1
65+	19.5	10.6	8.5	15.6	14.2
<u>2040</u>					
<18	17.4	19.8	27.4	17.0	22.1
18-24	7.7	8.9	10.1	6.7	8.8
25-44	24.0	27.3	26.7	23.8	25.6
45-64	25.2	27.0	20.8	22.9	23.3
65+	25.7	17.0	15.0	29.6	20.2

(Continued)

Projected Percent of Net Change Attributable to Each Race/Ethnicity Group in Texas for 2000-2040*

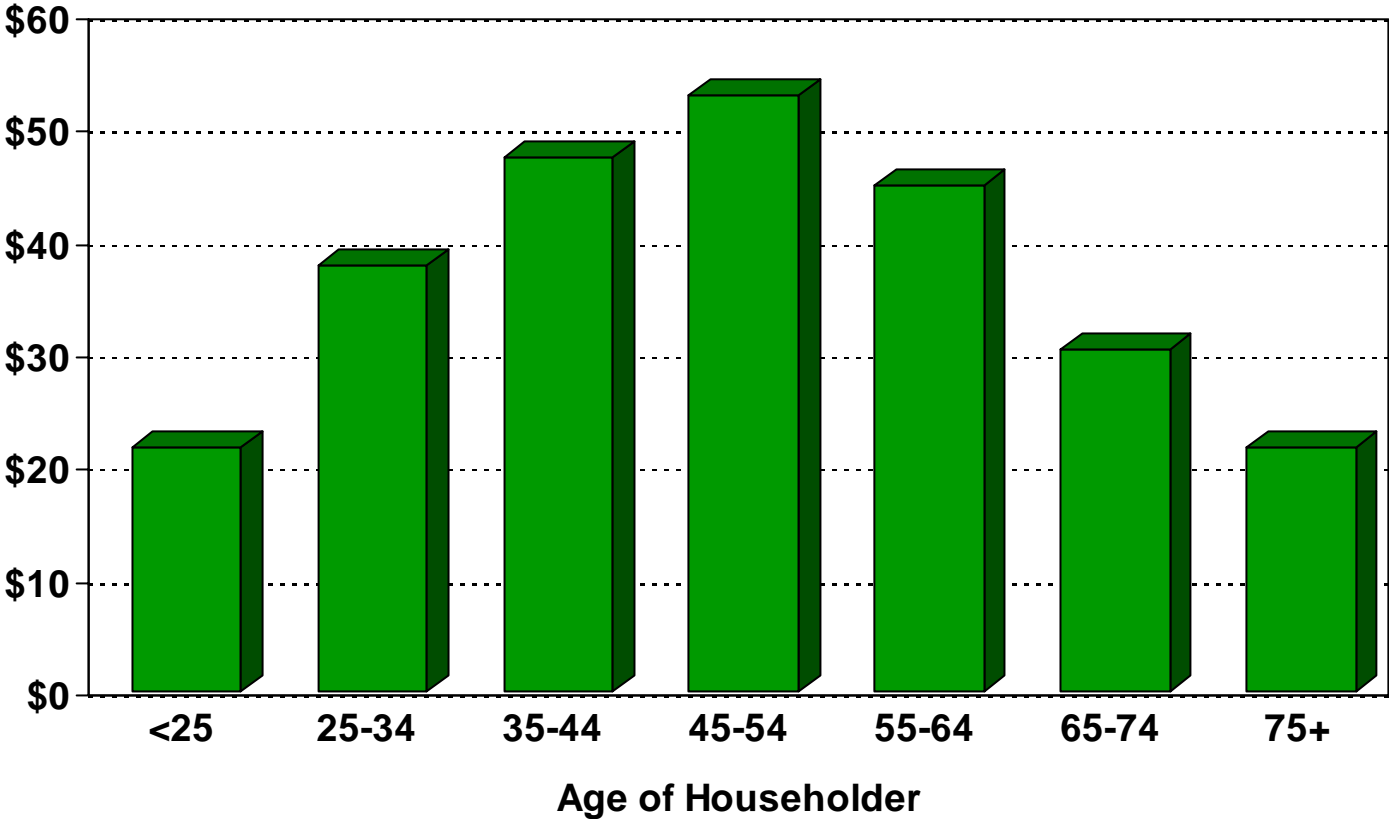


* Using U.S. Census count for 2000 and Texas State Data Center 1.0 population projection scenario for 2040.

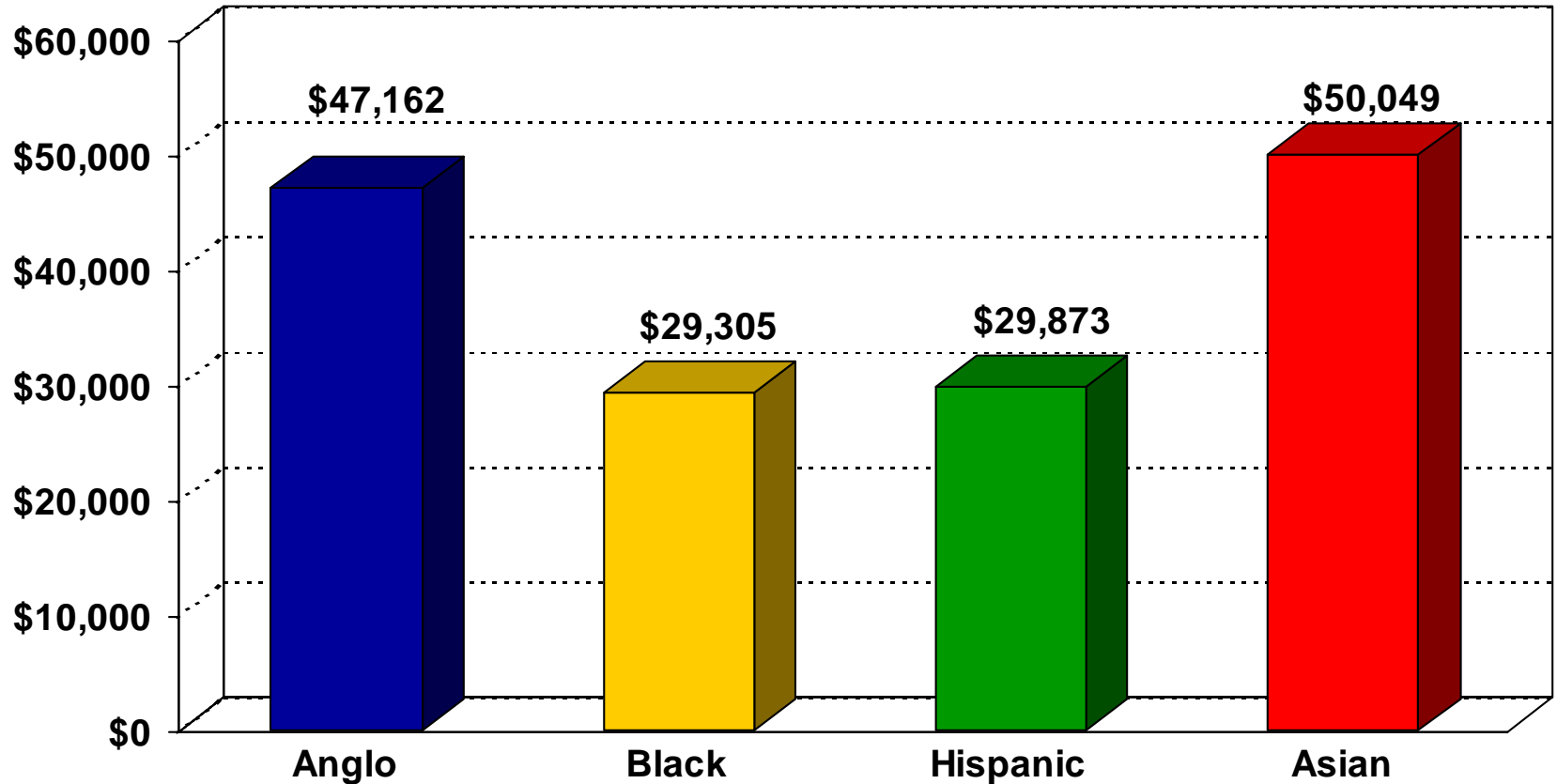
POPULATION CHARACTERISTICS AND SOCIOECONOMIC CONDITIONS

Median Household Income in 1999 in Texas by Age of Householder

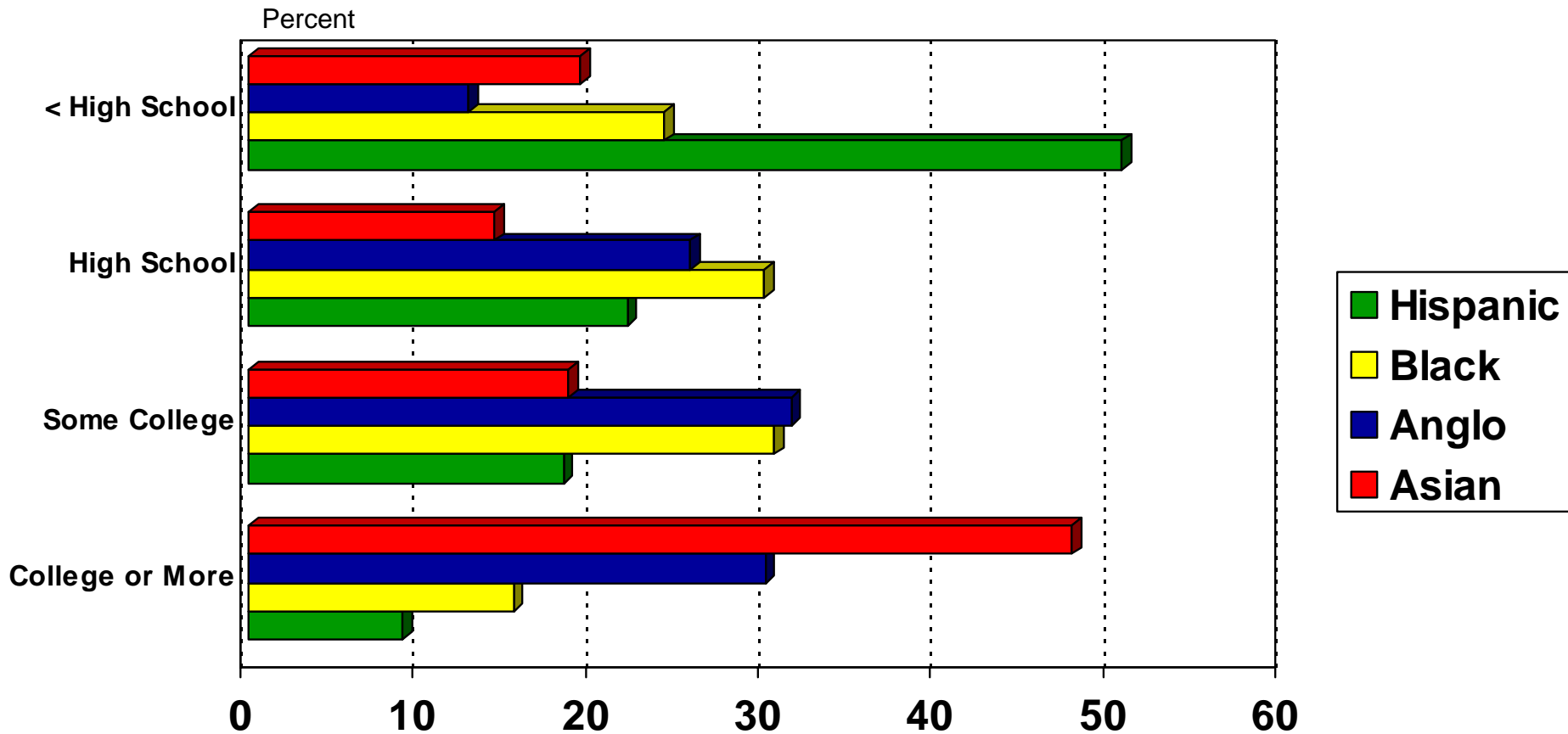
Thousands



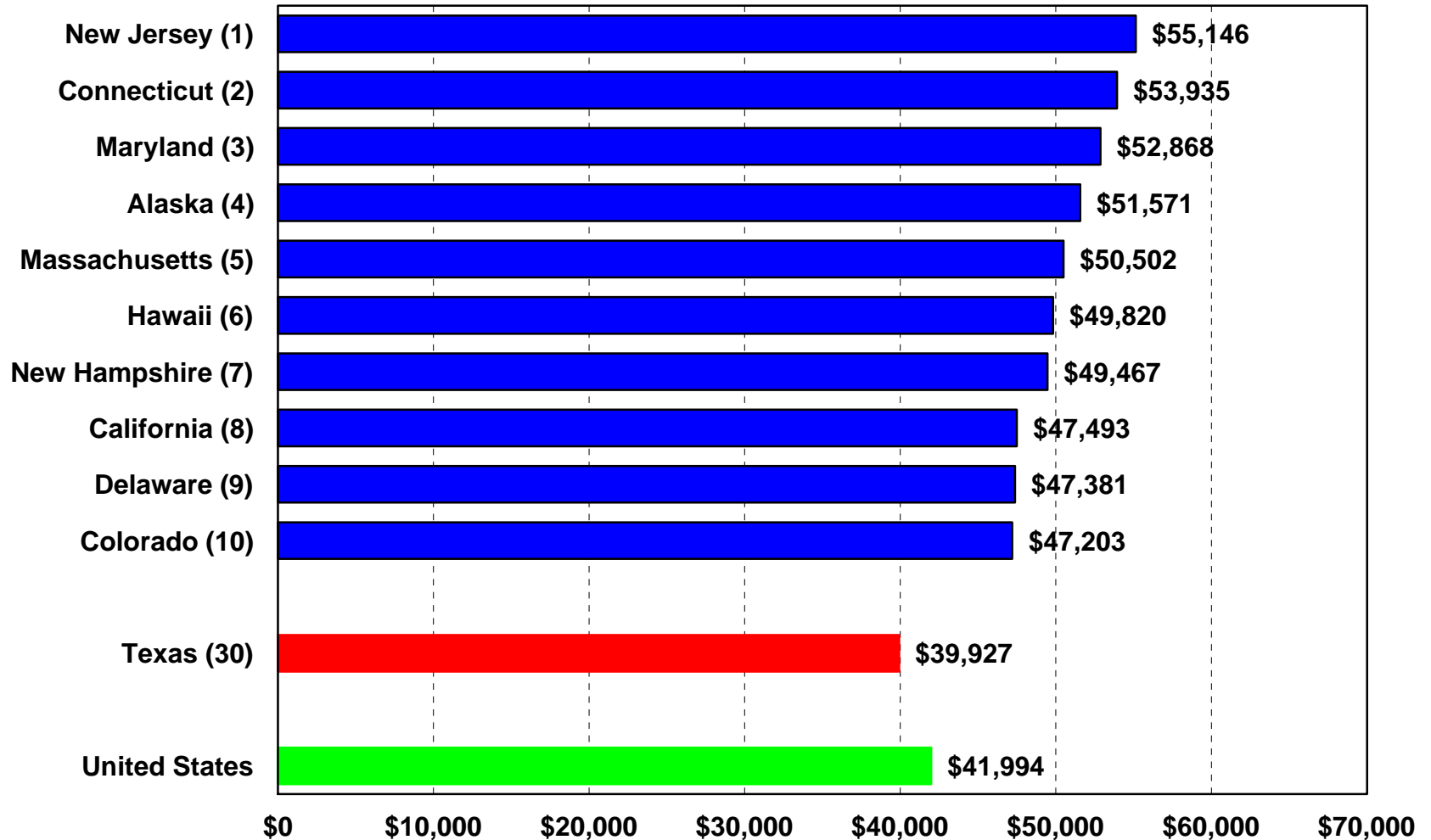
Median Household Income In 1999 in Texas by Race/Ethnicity of Householder



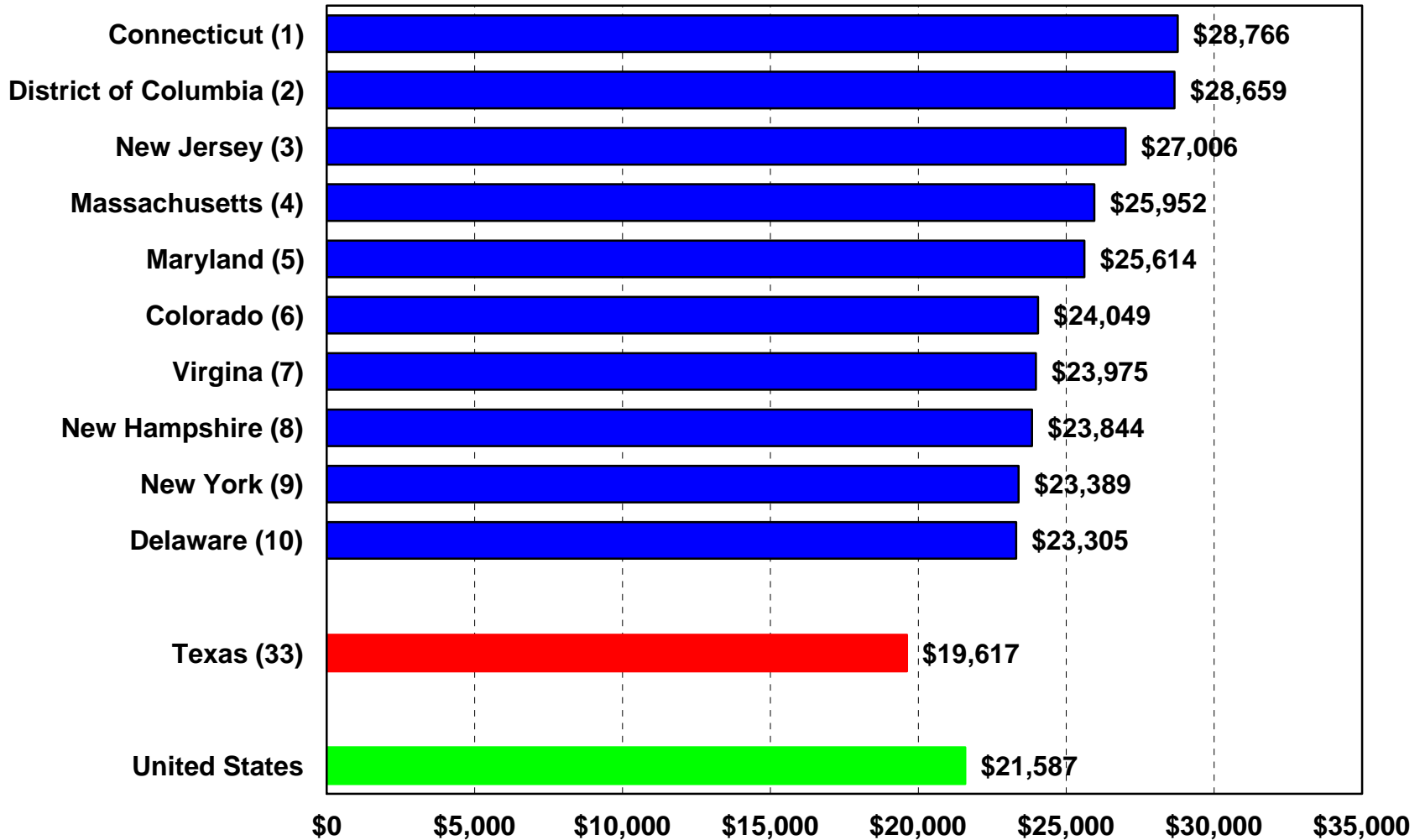
Educational Attainment in 2000 in Texas for Persons 25+ Years of Age By Race/Ethnicity



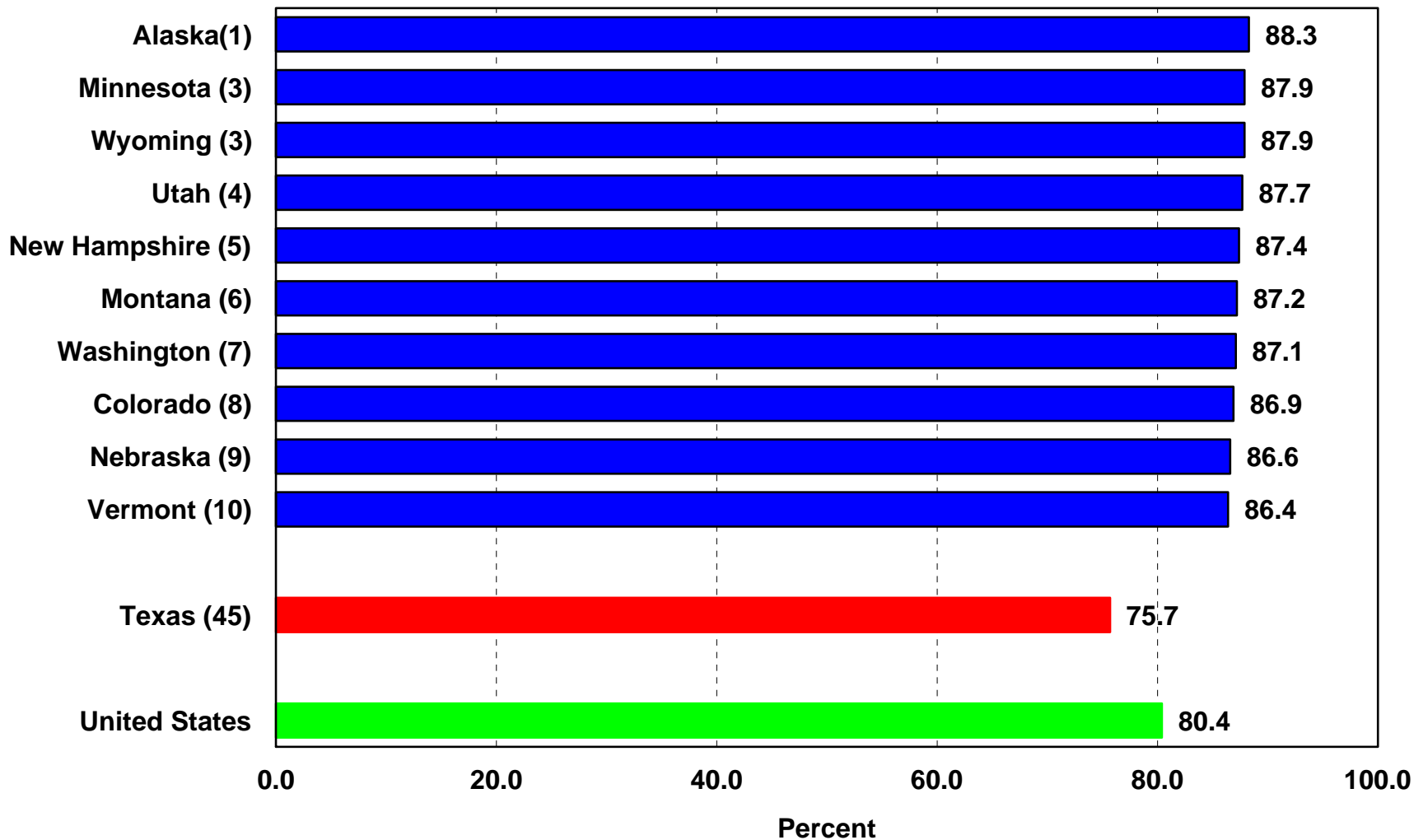
States Ranked by Median Household Income in 1999



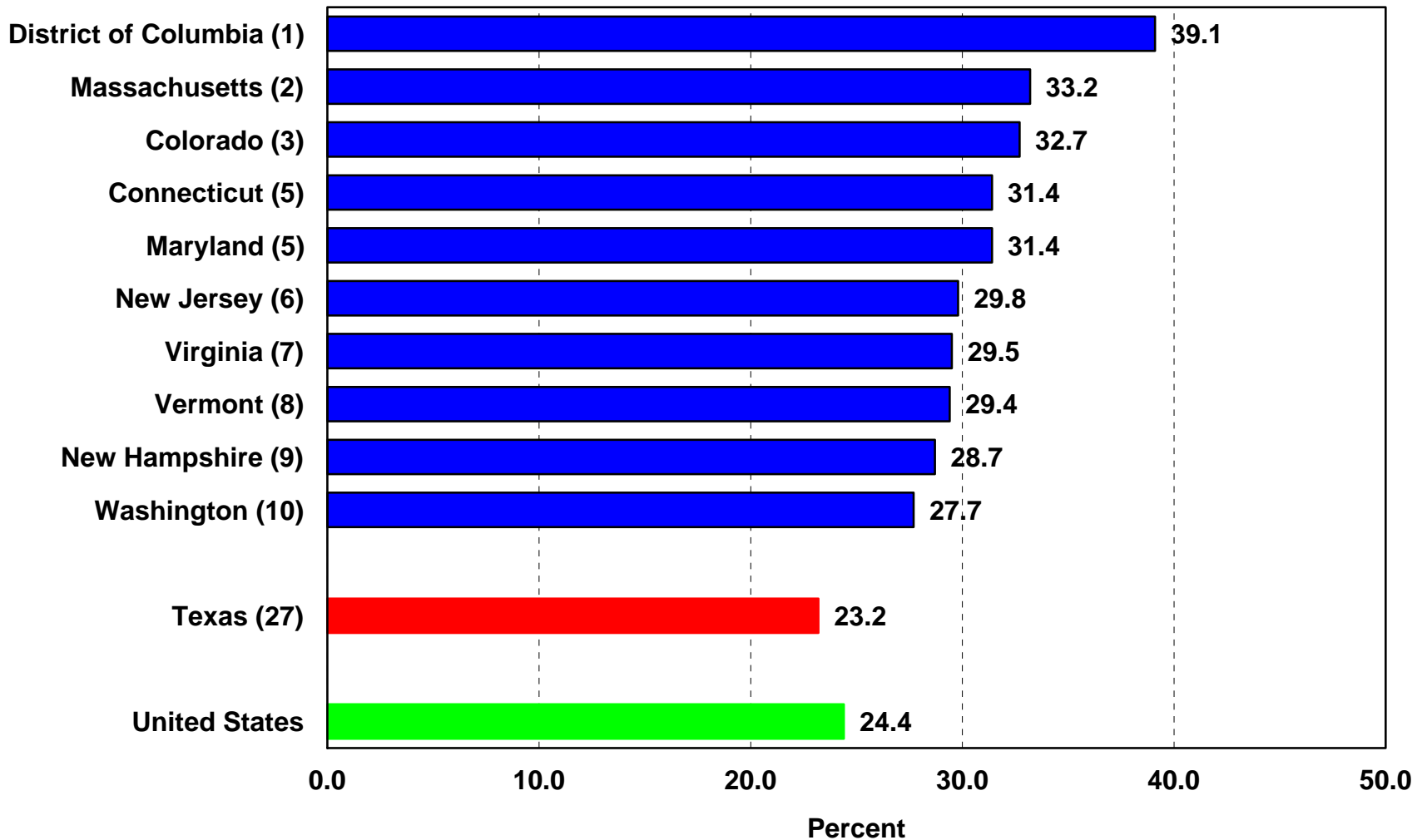
States Ranked by Per Capita Income in 1999



States Ranked by Percent High School Graduates + in the Population 25 Years of Age or Older, 2000



States Ranked by Percent College Graduates + in the Population 25 Years of Age or Older, 2000





**The Center for
Demographic and
Socioeconomic
Research and Education**

The Texas Challenge in the Twenty- First Century: Implications of Population Change for the Future of Texas

**by
Steve H. Murdock**

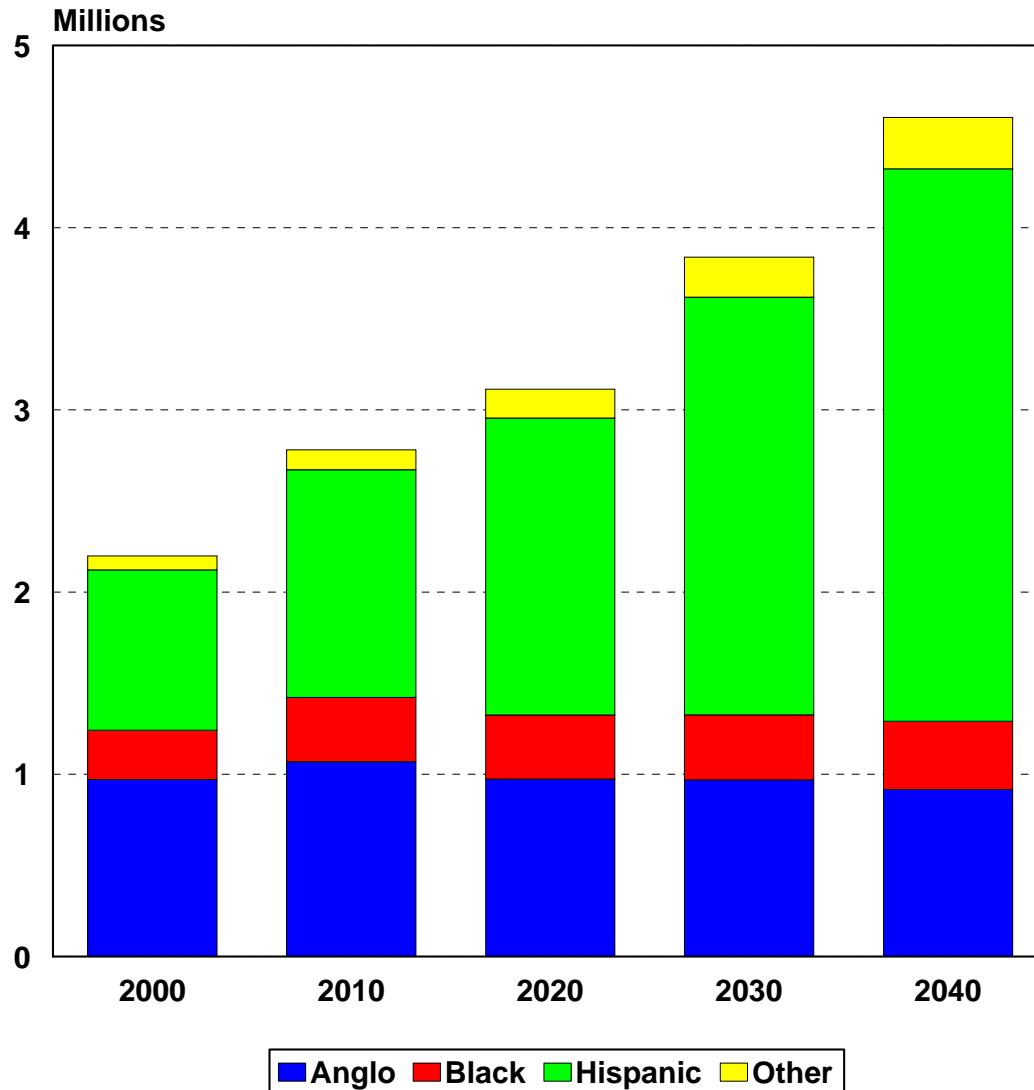
**The Center for Demographic and
Socioeconomic Research and Education
Department of Rural Sociology
Texas A&M University System**

EDUCATION

**Population in Texas 18-24 Years of Age by Race/Ethnicity in
2000 and Projections of the Population in Texas 18-24 Years of
Age by Race/Ethnicity from 2010 to 2040**

Year	Anglo	Black	Hispanic	Other	Total
2000	971,362	270,601	880,281	76,637	2,198,881
<u>Assuming Zero Migration</u>					
2010	1,030,424	306,345	883,939	67,284	2,287,992
2020	924,258	279,001	1,027,020	75,350	2,305,629
2030	887,776	256,582	1,107,379	69,555	2,321,292
2040	811,604	239,910	1,150,384	57,488	2,259,386
<u>Assuming Rates of Net Migration Equal to One-Half of 1990-2000</u>					
2010	1,049,795	328,860	1,050,864	86,071	2,515,590
2020	948,627	313,177	1,290,162	108,916	2,660,882
2030	927,818	302,637	1,596,896	124,405	2,951,756
2040	862,812	299,471	1,863,830	128,115	3,154,228
<u>Assuming Rates of Net Migration Equal to 1990-2000</u>					
2010	1,069,509	352,945	1,248,455	109,499	2,780,408
2020	973,674	351,633	1,629,218	158,622	3,113,147
2030	969,601	356,679	2,291,996	219,104	3,837,380
2040	917,289	373,650	3,031,851	281,916	4,604,706

Projected Texas Population Aged 18-24 by Race/Ethnicity in Texas, 2000-2040*



* Projections are shown for the 1.0 scenario

Percent Change in Enrollment in Texas Public Elementary and Secondary Schools, and Total Public Colleges and Universities by Race/Ethnicity, 1990-2000

Time Period	Anglo	Black	Hispanic	Other	Total
Total Public Colleges and Public Universities					
1990-2000	-9.5	30.9	55.5	75.0	8.6
Total Elementary and Secondary					
1990-2000	5.9	22.4	46.3	63.6	22.9

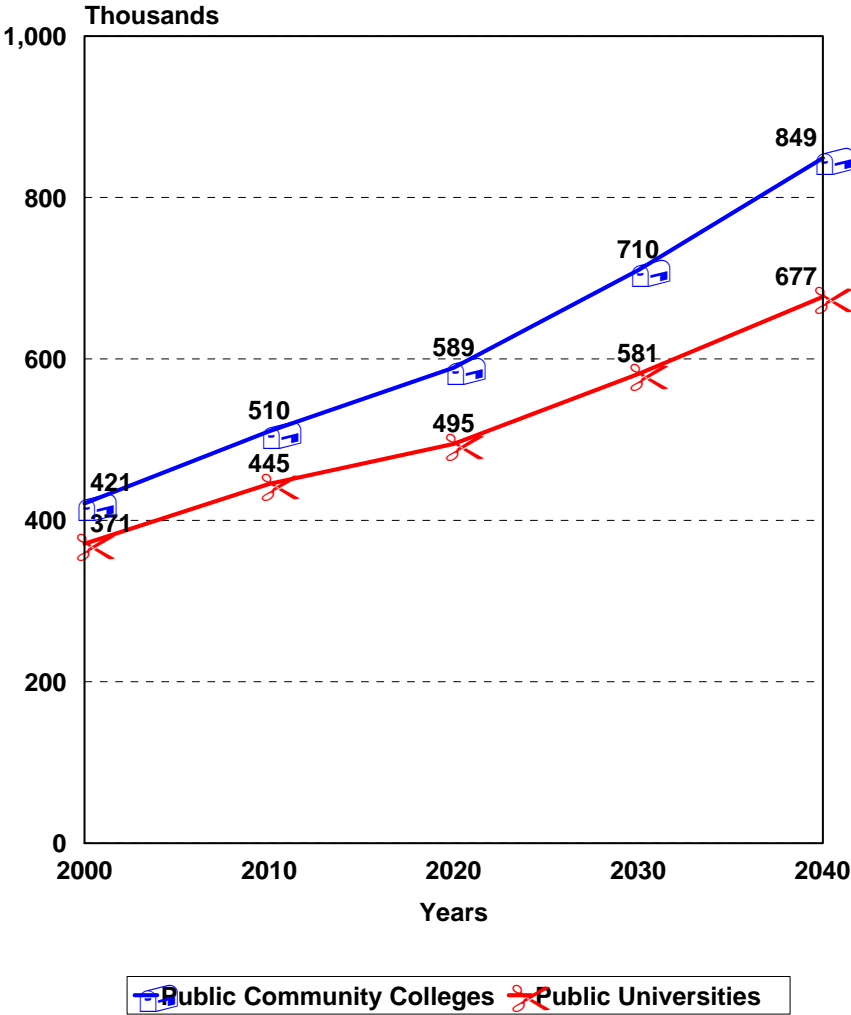
**Percent of Population 25 Years of Age or Older in
Texas Who Are High School Graduates and Higher or
College Graduates and Higher by Race/Ethnicity,
and Percent Change, 1990-2000**

Race/ Ethnicity	Percent High School Graduates and Higher	Percent College Graduates and Higher
	<u>1990</u>	
Anglo	81.5	25.2
Black	66.2	12.0
Hispanic	44.6	7.3
Asian	79.1	41.3
Total	72.1	20.3
	<u>2000</u>	
Anglo	87.2	30.0
Black	75.8	15.3
Hispanic	49.3	8.9
Asian	80.7	47.8
Total	75.7	23.2
	<u>Percent Change in Percent</u>	
Anglo	7.0	19.0
Black	14.5	27.5
Hispanic	10.5	21.9
Asian	2.0	15.7
Total	5.0	14.3

**Public Community College and University
Enrollment Rates (Per 100 Persons Ages 18 to 35)
in Texas by Race/Ethnicity, 1990 and 2000**

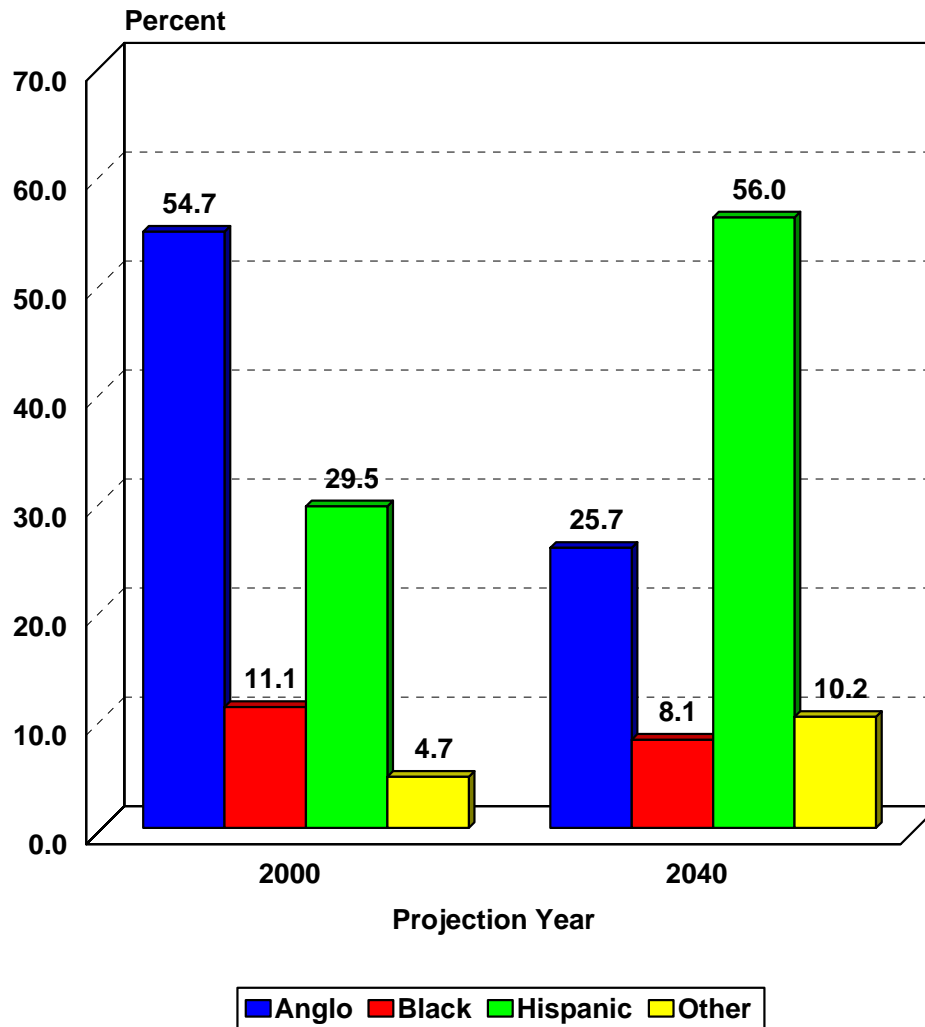
Year	Anglo	Black	Hispanic	Other	Total
Community College					
1990	6.3	4.1	4.4	5.6	5.5
2000	6.5	5.2	4.8	6.8	5.7
Public University					
1990	7.4	4.0	3.5	10.0	6.0
2000	7.5	4.7	3.3	10.3	5.7

Enrollment in Public Community Colleges and Public Universities in Texas, 2000-2040*



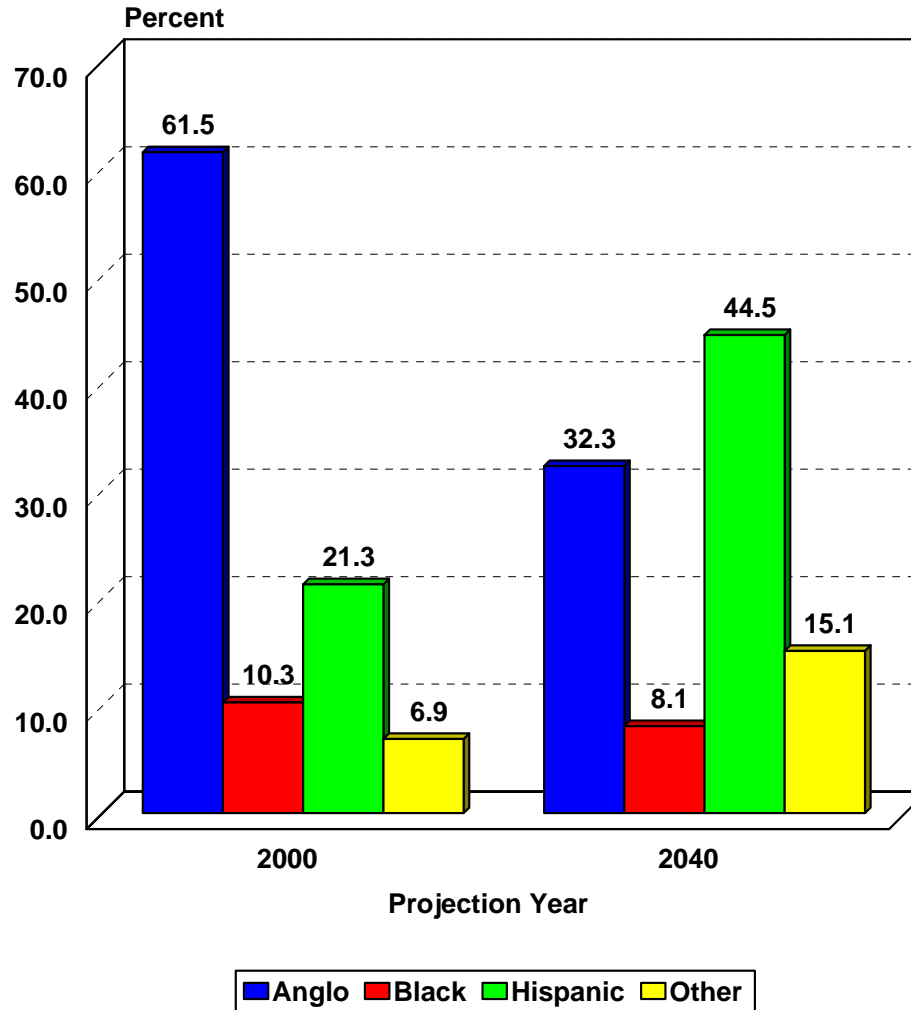
* Projections are shown for the 1.0 scenario

Projected Percent of Public Community College Enrollment by Race/Ethnicity in 2000 and Projections for 2040*



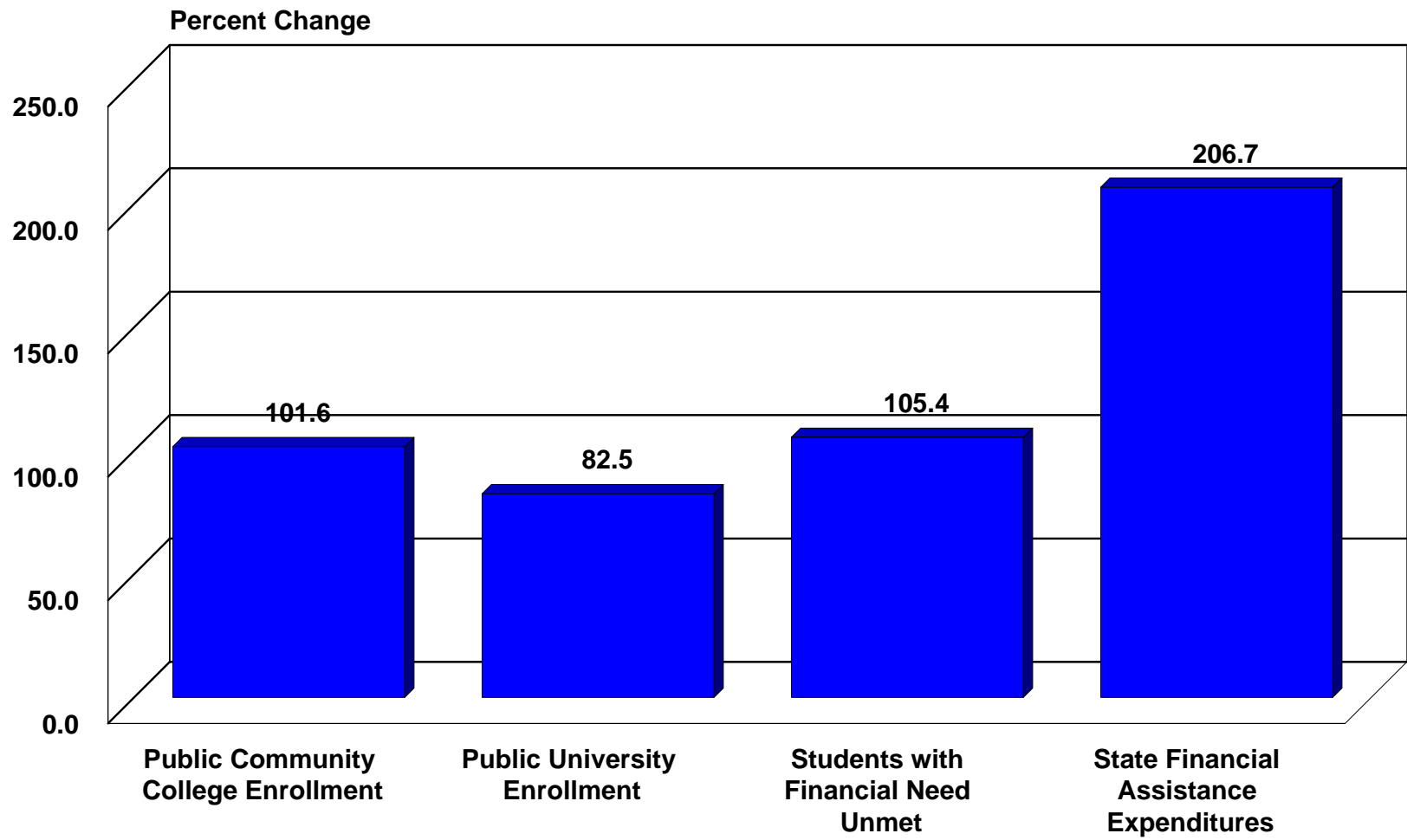
* Projections are shown for the 1.0 scenario

Projected Percent of Public University Enrollment by Race/Ethnicity in 2000 and Projections for 2040*



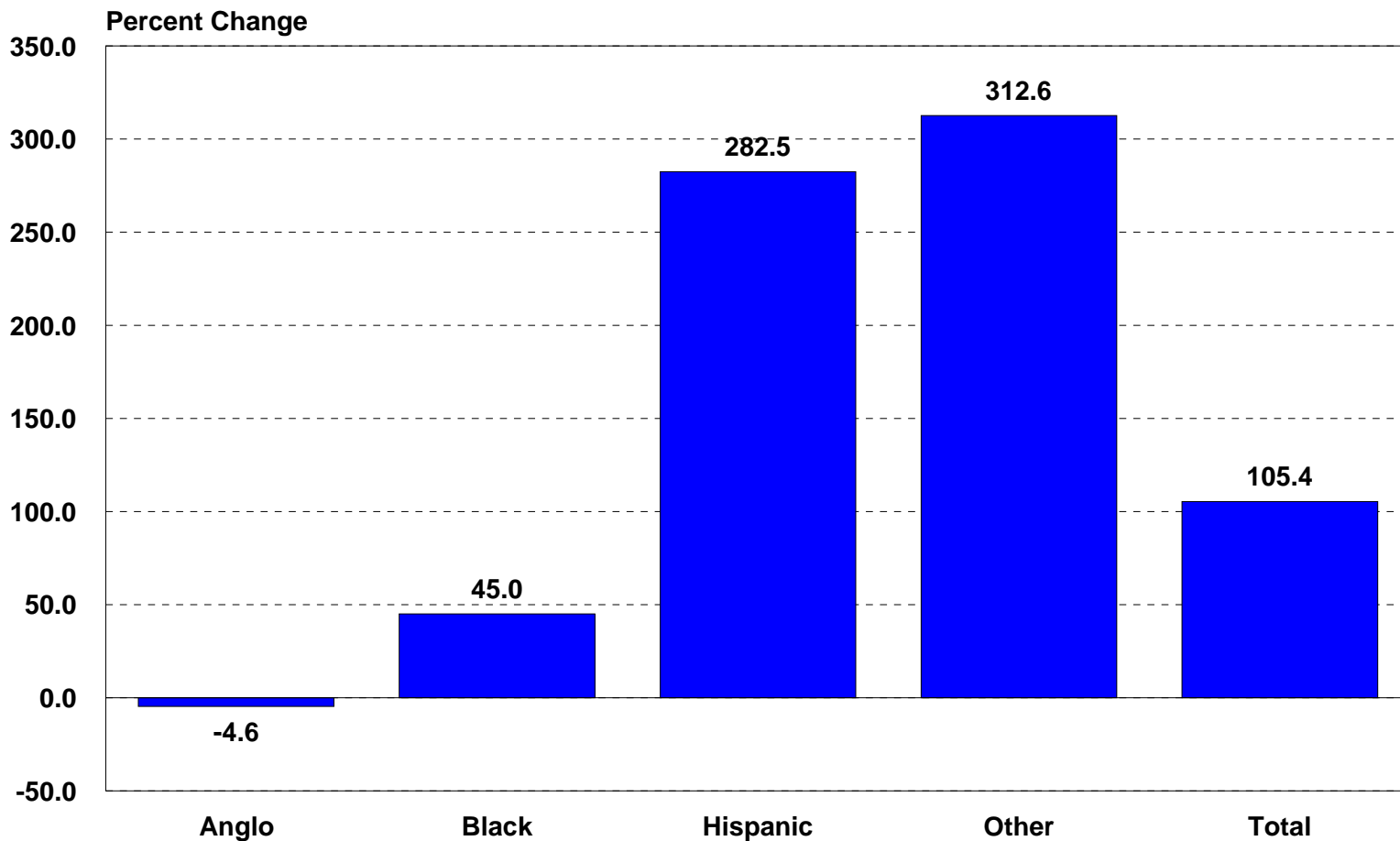
* Projections are shown for the 1.0 scenario

Percent Change in Public Community College Enrollment, Public University Enrollment, Students with Financial Need Unmet by Household Resources, and State Financial Assistance Expenditures for Public Higher Education in Texas, 2000-2040*



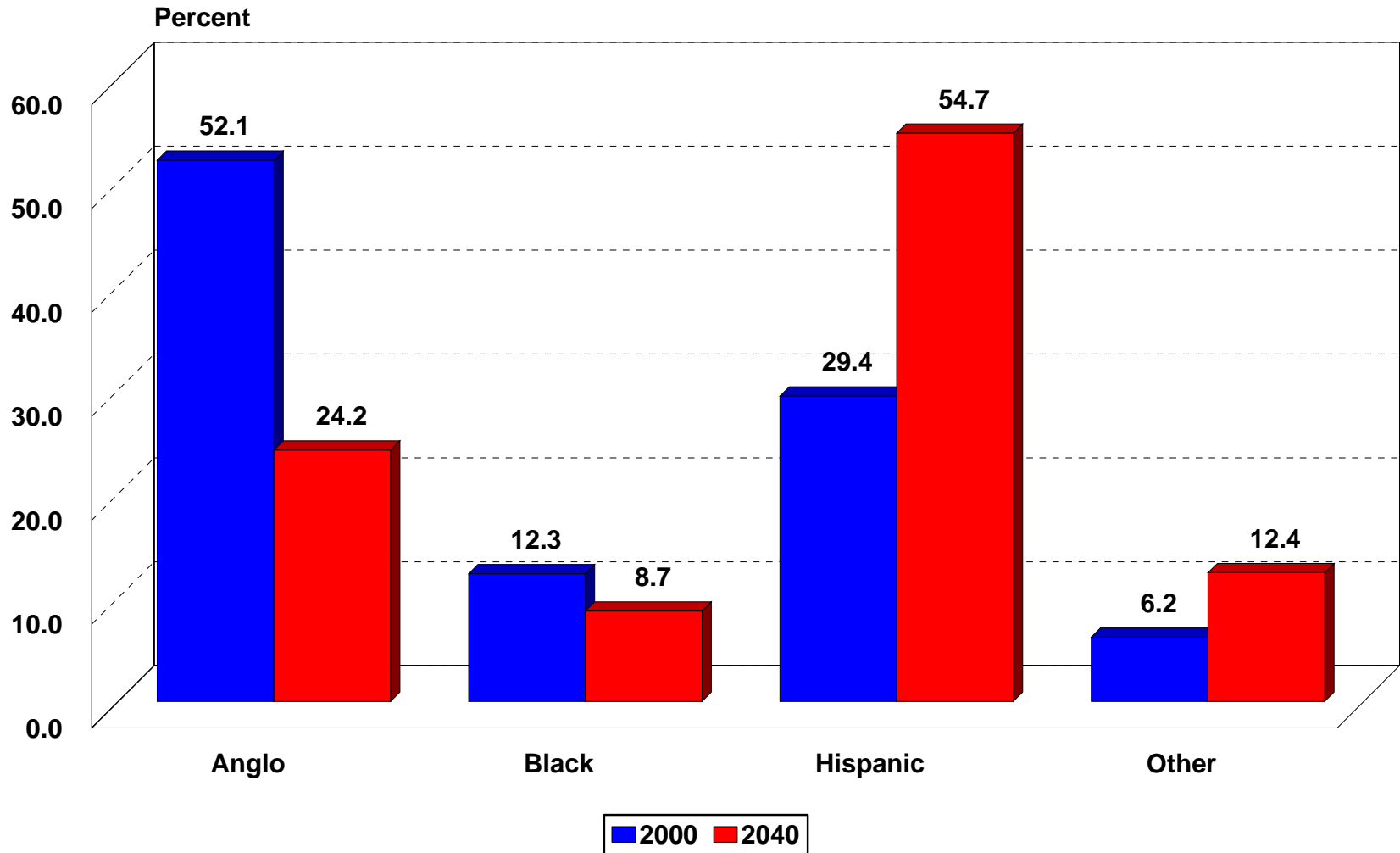
*Projections are shown for the 1.0 scenario

Percent Change in Projected Number of Students with Financial Need Unmet by Household Resources Enrolled at Public Colleges and Universities in Texas, 2000-2040*



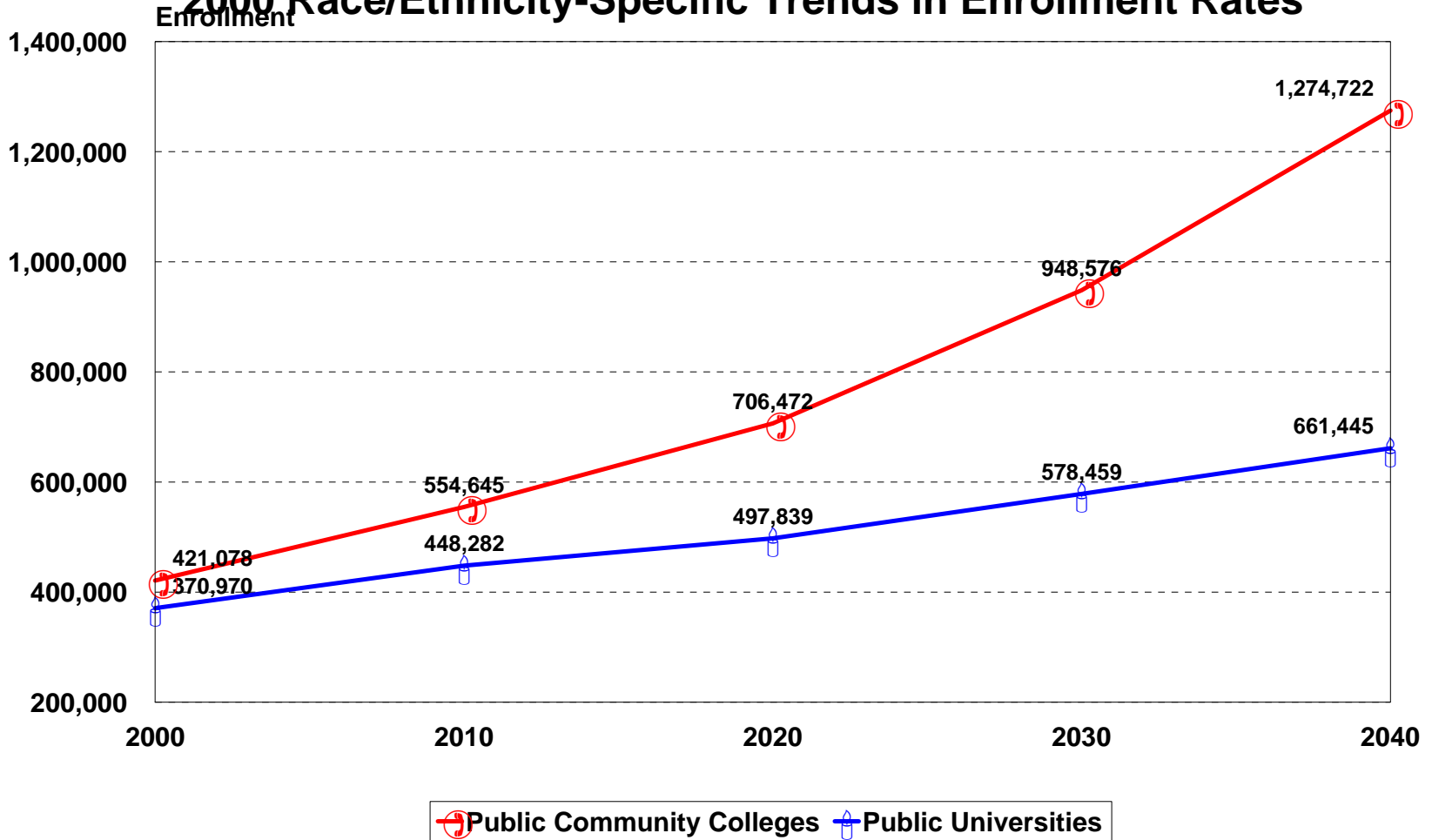
*Projections are shown for the 1.0 scenario

Percent of Students with Financial Need Unmet by Household Resources Enrolled at Public Colleges and Universities by Race/Ethnicity in Texas, 2000 and 2040*



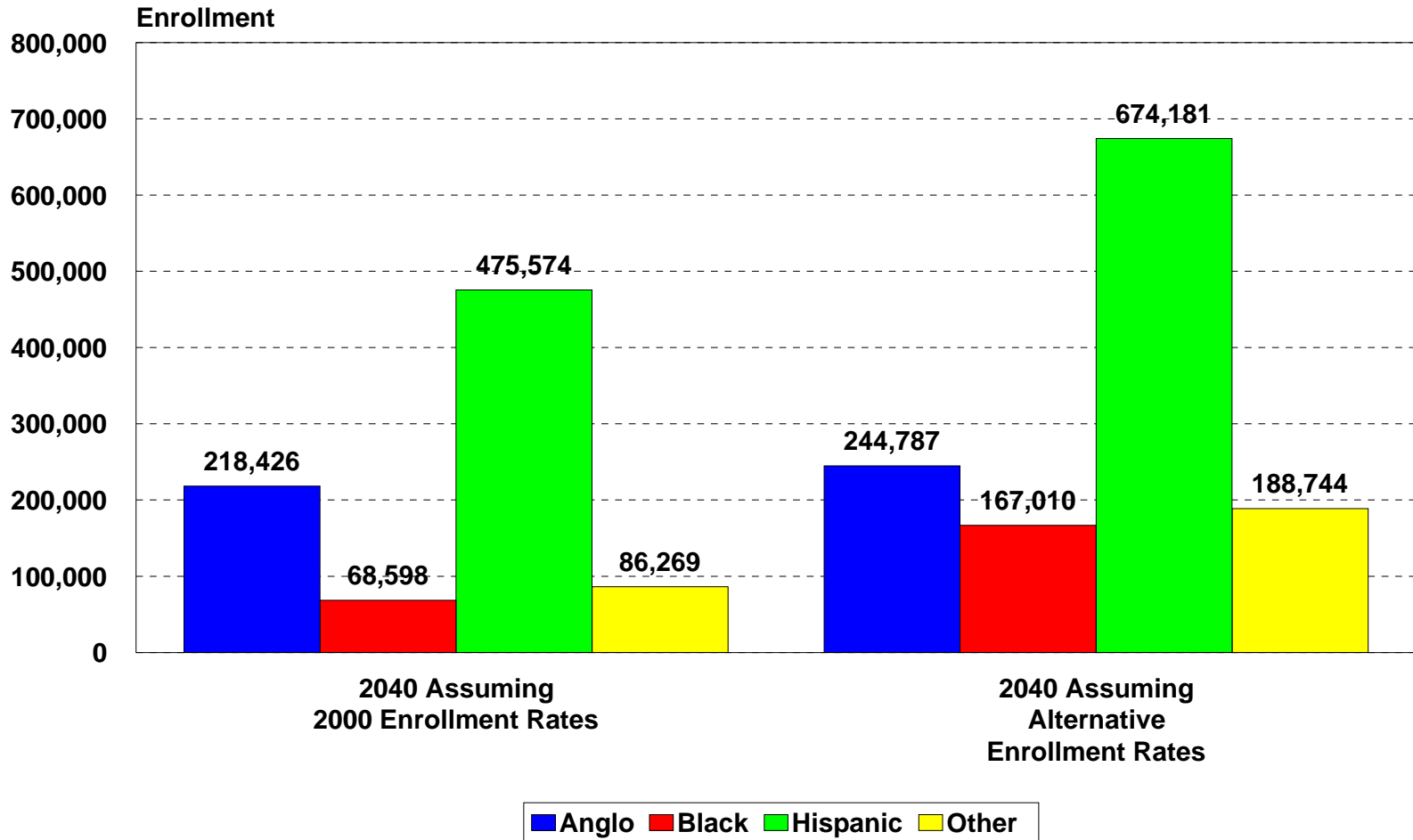
*Projections are shown for the 1.0 scenario

Public Community College and Public University Enrollment in Texas by Race/Ethnicity in 2000 and Projections to 2040* Assuming 1990-2000 Race/Ethnicity-Specific Trends in Enrollment Rates



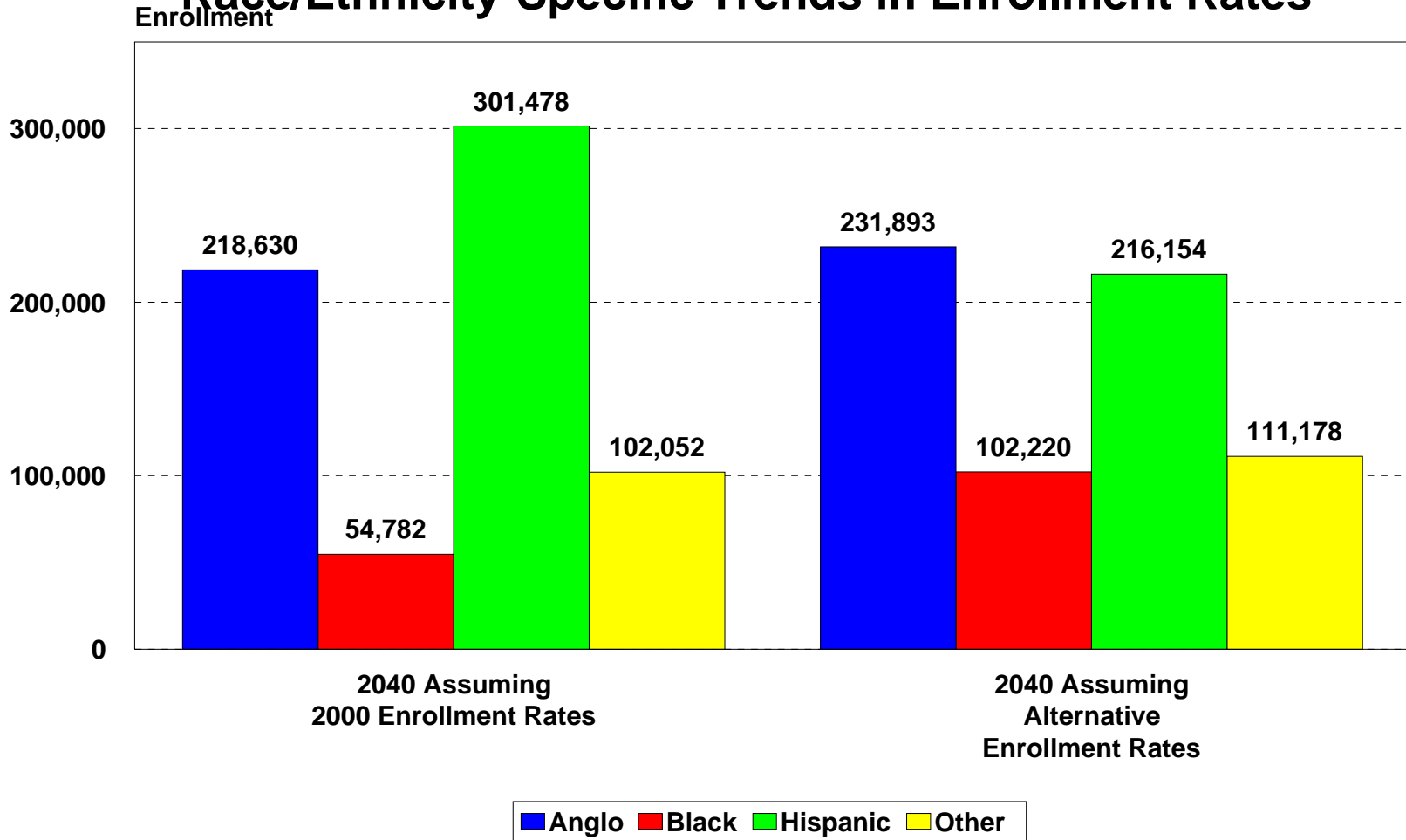
*Projections are shown for the 1.0 scenario

Projected Public Community College Enrollment in Texas by Race/Ethnicity in 2040* Assuming 1990-2000 Race/Ethnicity-Specific Trends in Enrollment Rates



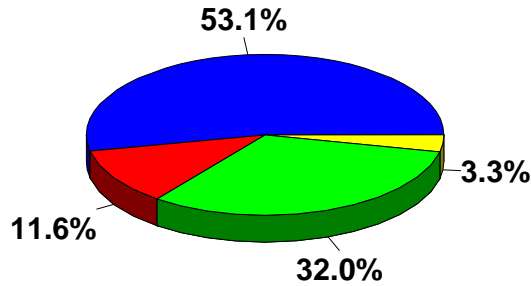
*Projections are shown for the 1.0 scenario

Projected Public University Enrollment in Texas by Race/Ethnicity in 2040* and Assuming 1990-2000 Race/Ethnicity-Specific Trends in Enrollment Rates

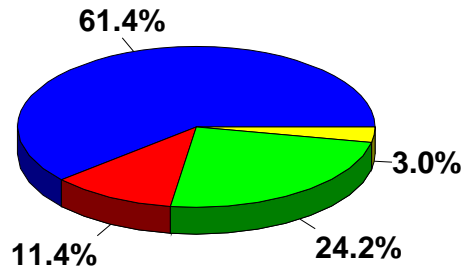


*Projections are shown for the 1.0 scenario

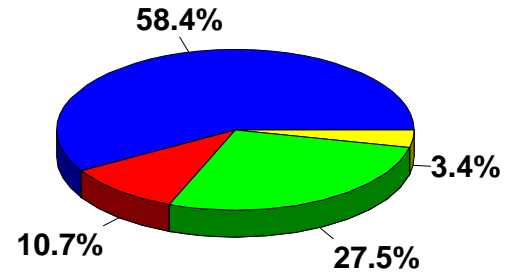
Ethnic Diversity of the Population, Householders, and Labor Force in Texas, 2000 and 2040*



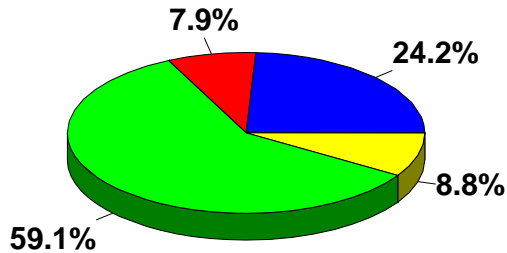
2000 Population



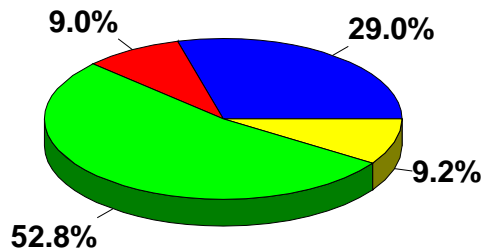
2000 Householders



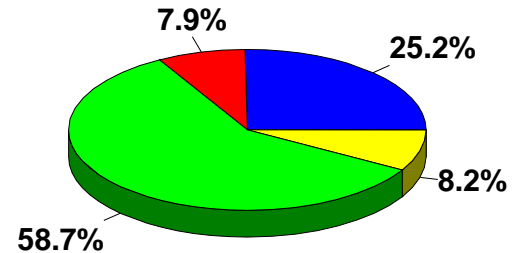
2000 Civilian Labor Force



2040 Population



2040 Householders

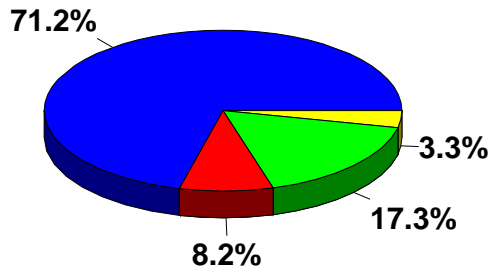


2040 Civilian Labor Force

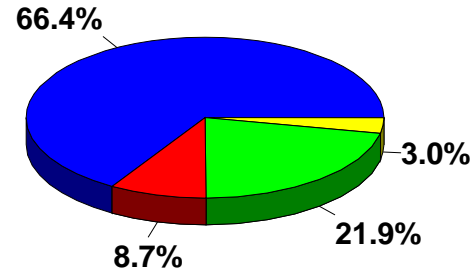


* Projections are shown for the 1.0 scenario

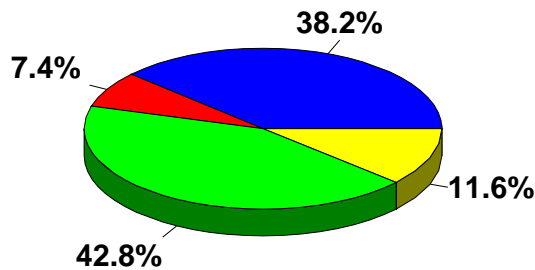
Ethnic Diversity of Household Income and Consumer Expenditures in Texas, 2000 and 2040*



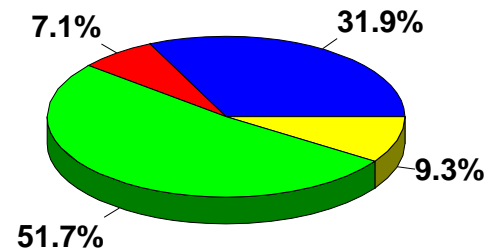
2000 Aggregate Household Income



2000 Consumer Expenditures



2040 Aggregate Household Income

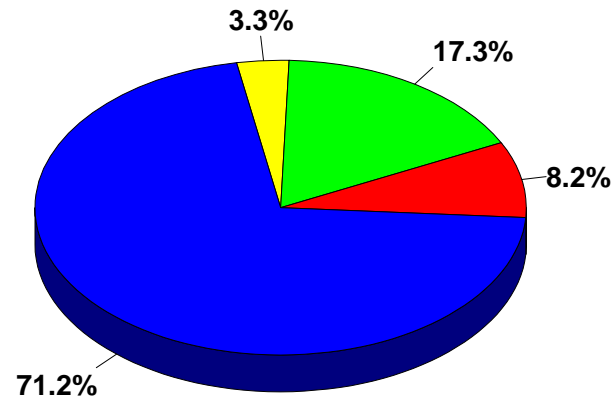


2040 Consumer Expenditures

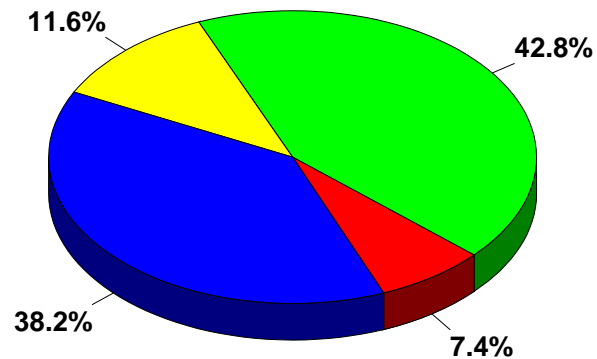


* Projections are shown for the 1.0 scenario

State Tax Revenues in Texas Proportioned by Race/Ethnicity in 2000 and Projections to 2040* Assuming 2000 Decile Tax Rates



2000
Tax Revenues

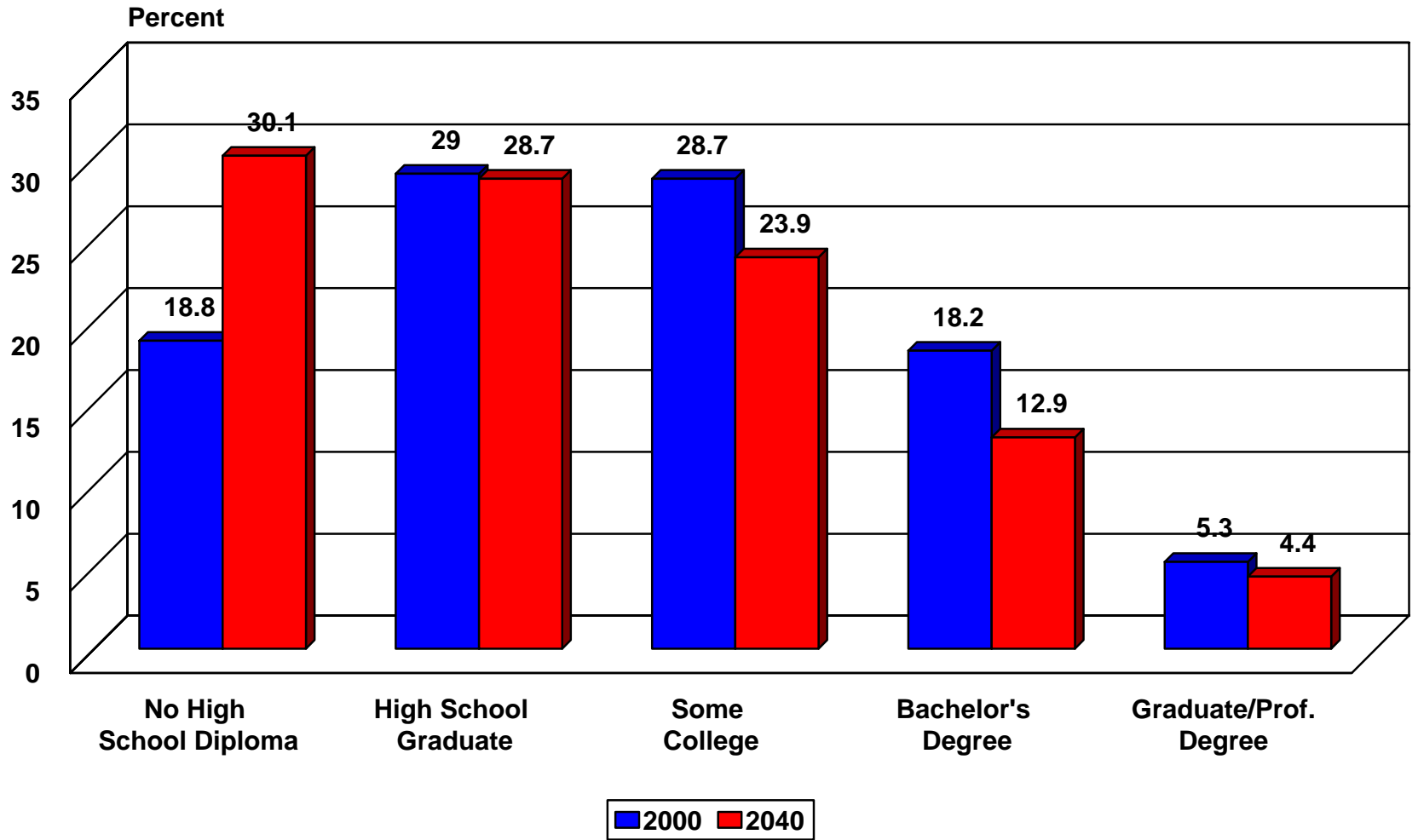


2040* Projected
Tax Revenues



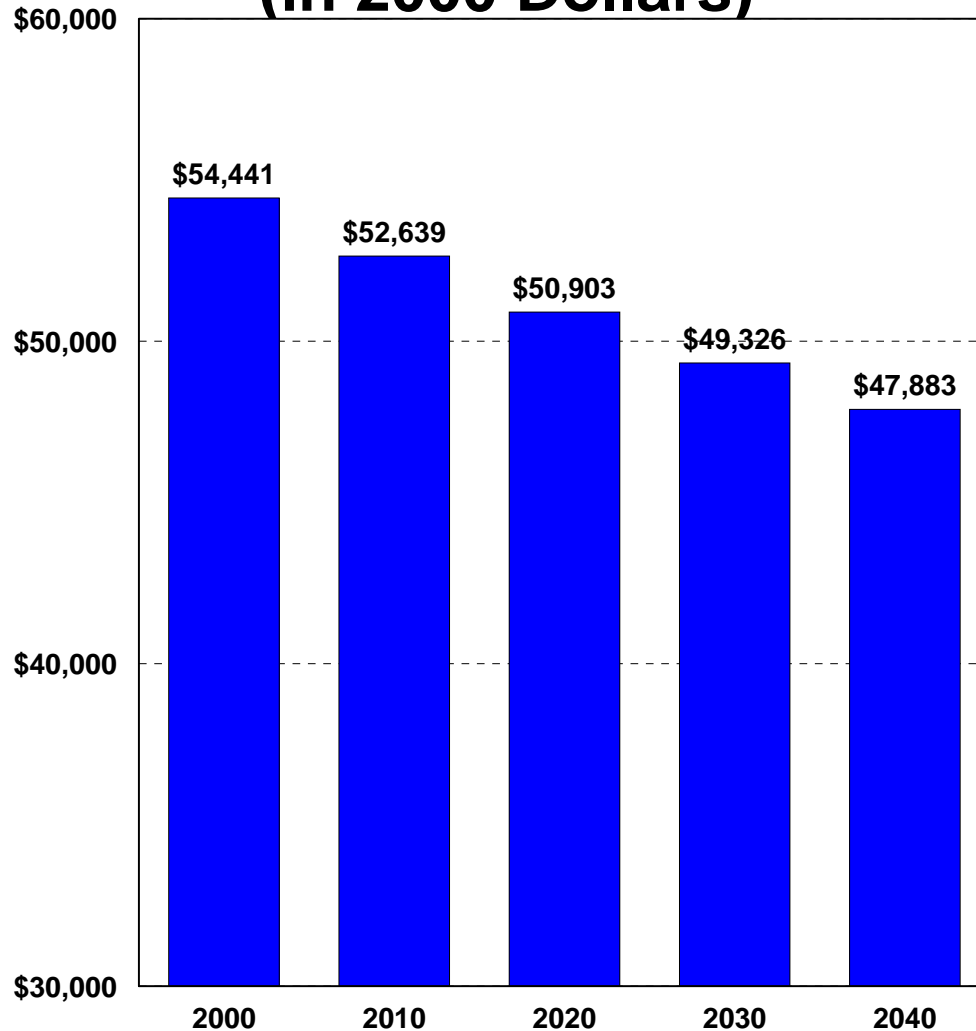
*Projections are shown for the 1.0 scenario

Projected Percent of Labor Force by Educational Attainment in Texas, 2000 and 2040



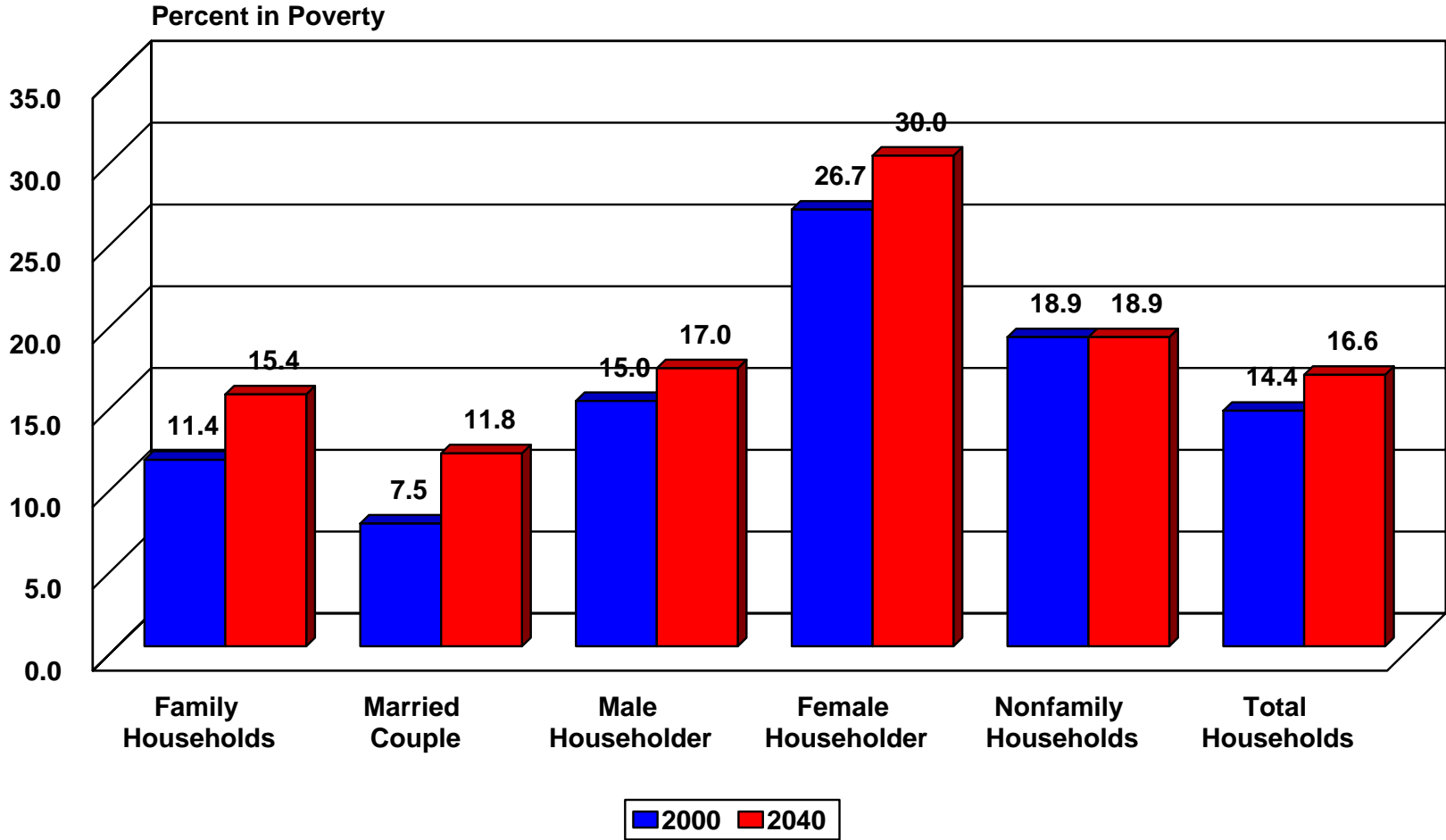
* Projections are shown for the 1.0 scenario

Average Household Income in Texas, 2000-2040* (in 2000 Dollars)



* Projections are shown for the 1.0 scenario

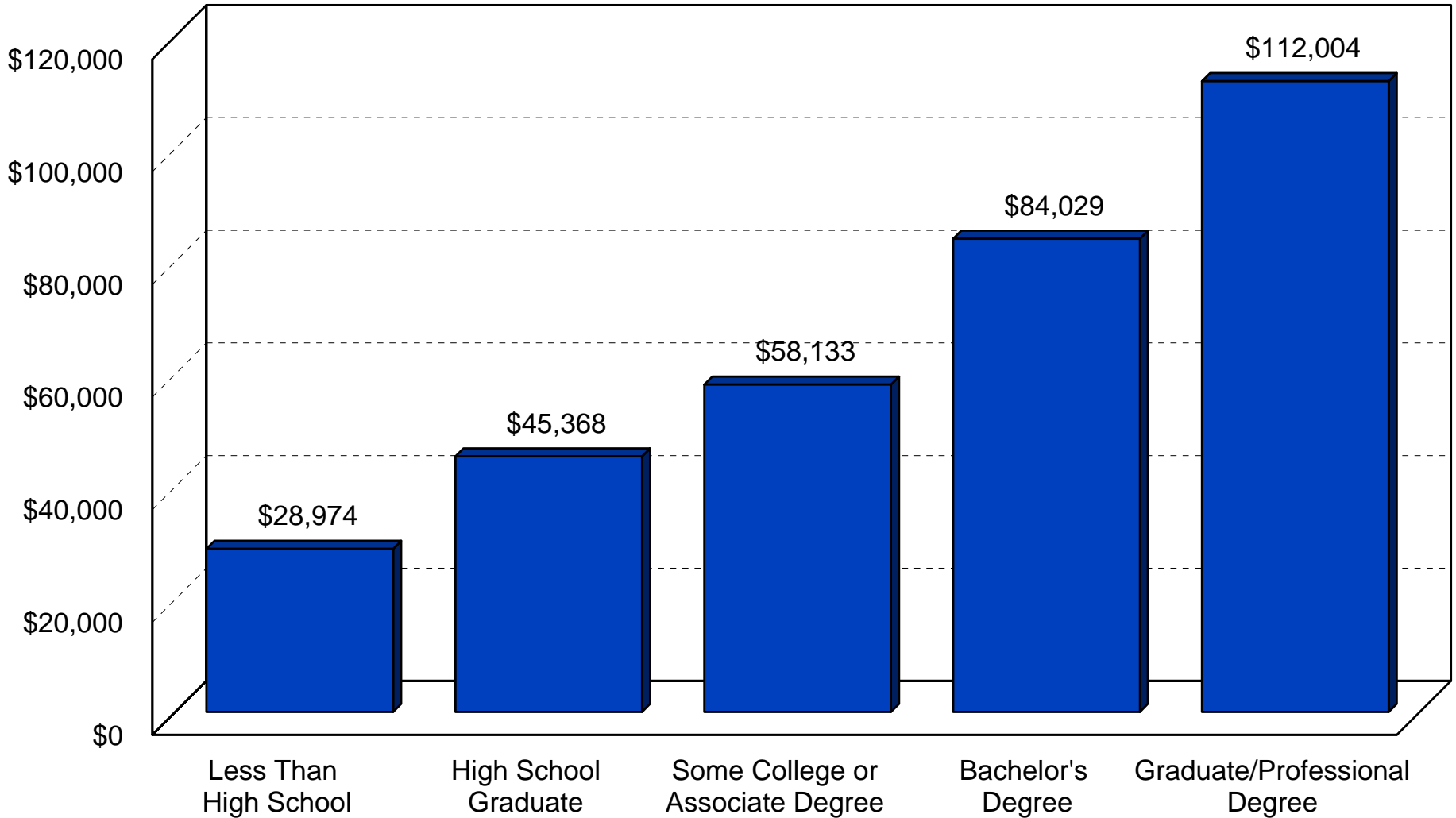
Projected Percent of Households in Poverty by Family Type in Texas, 2000 and 2040



* Projections are shown for the 1.0 scenario

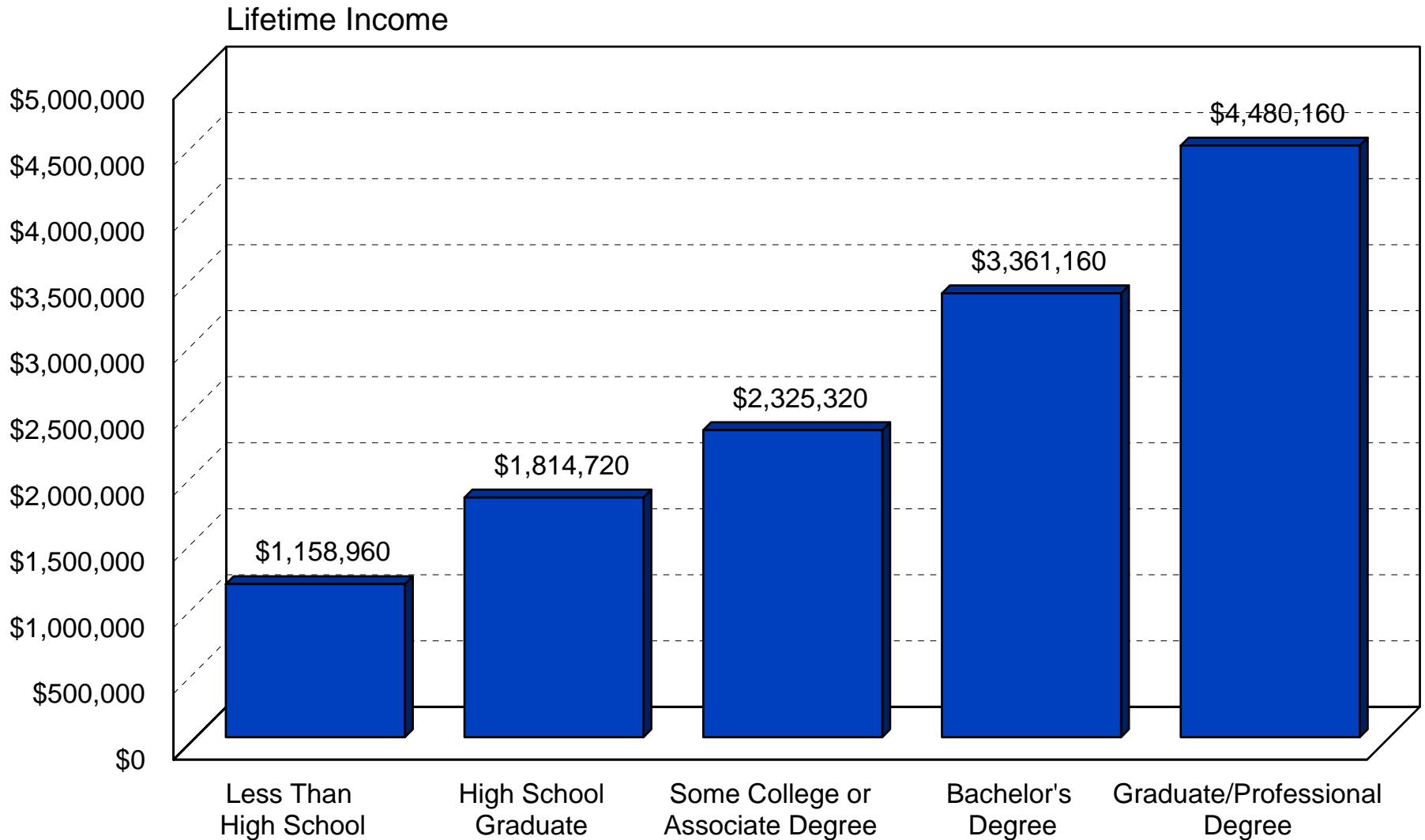
Average Annual Household Income in the United States by Educational Attainment* in 2000

Average Income



*From March 2001 Current Population Survey

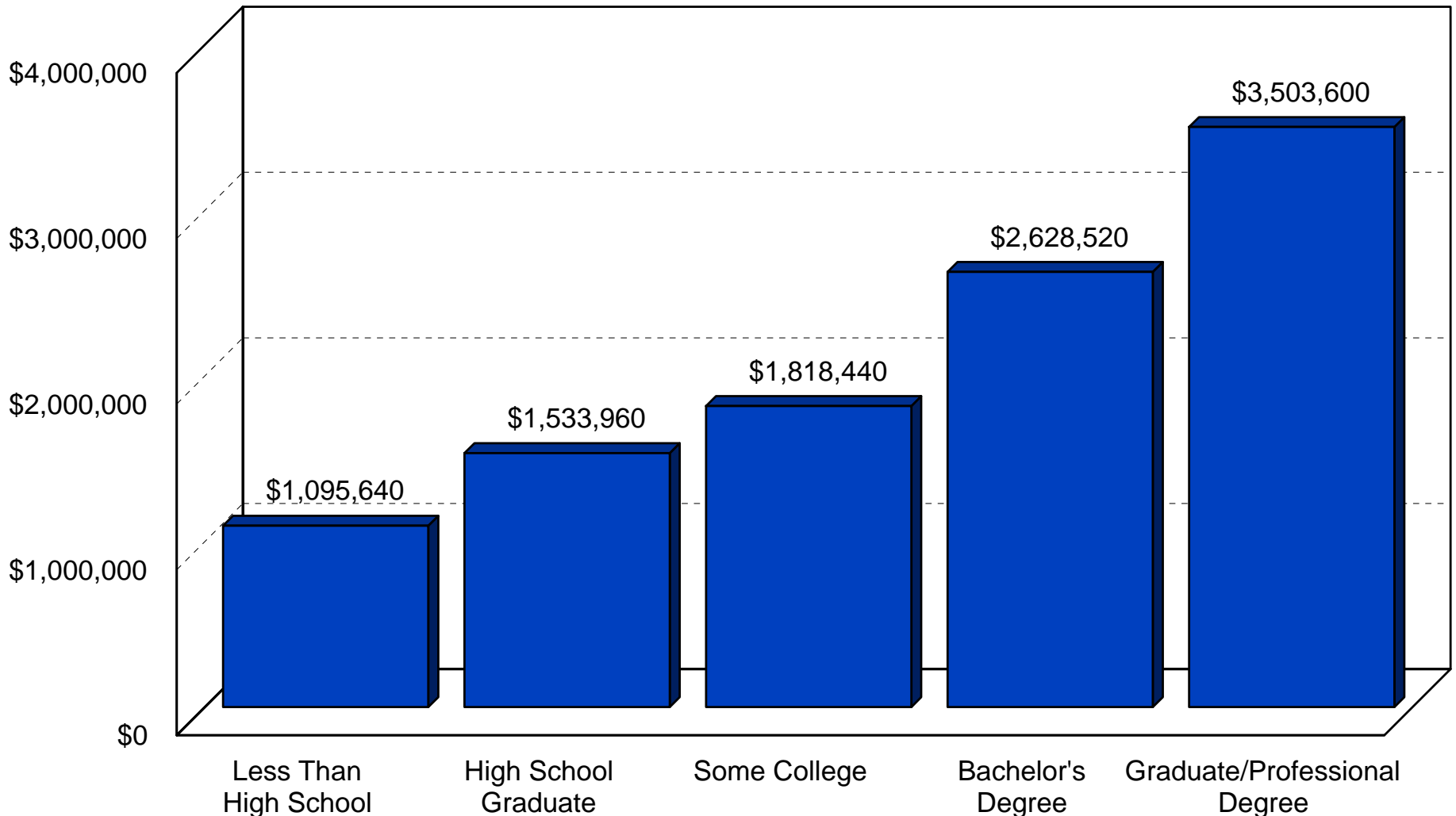
Lifetime Household Income in the United States by Educational Attainment* in 2000



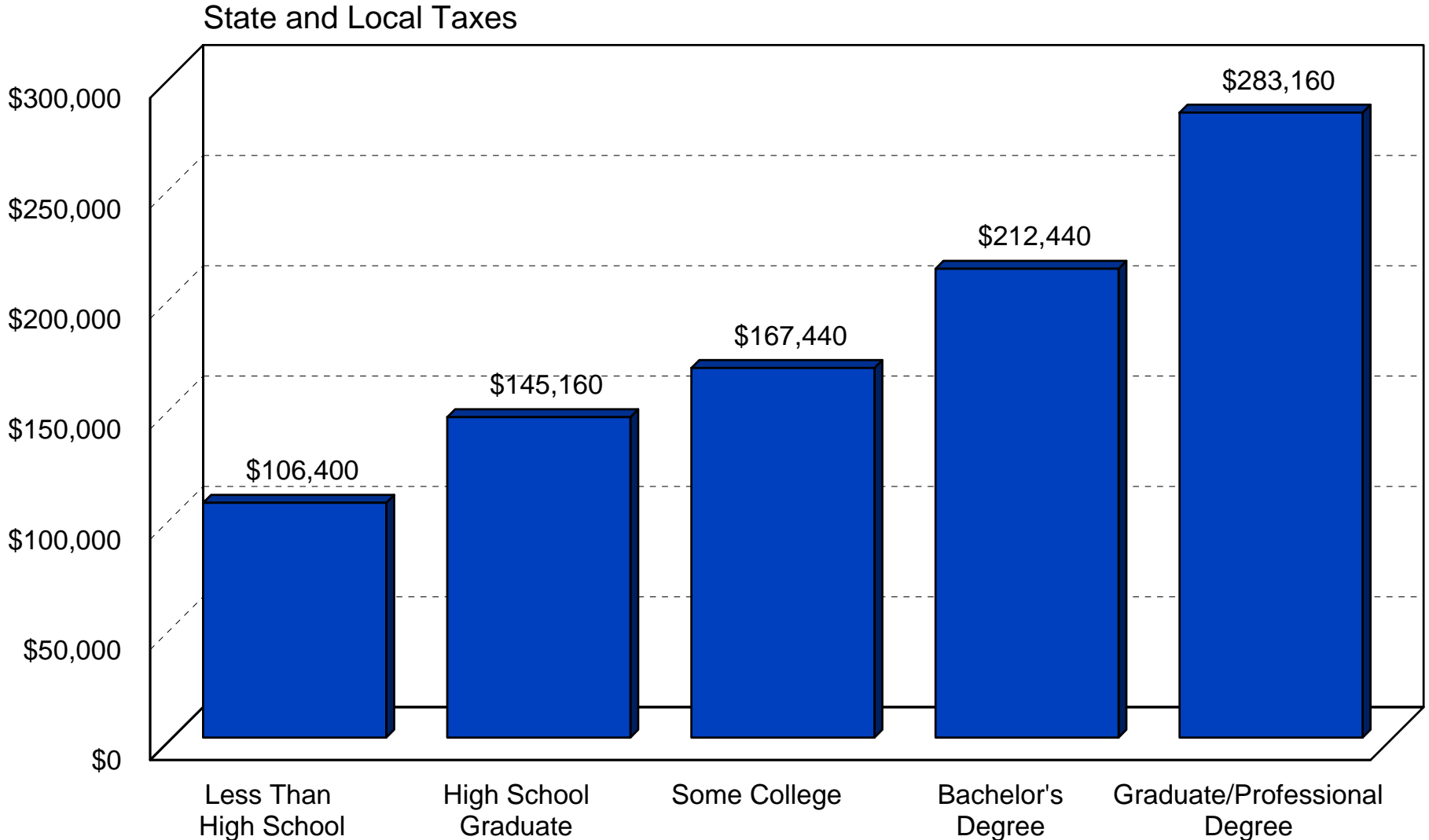
*From March 2001 Current Population Survey

Working Lifetime (40 Years) Consumer Expenditures by Educational Attainment (in 2000 Dollars)

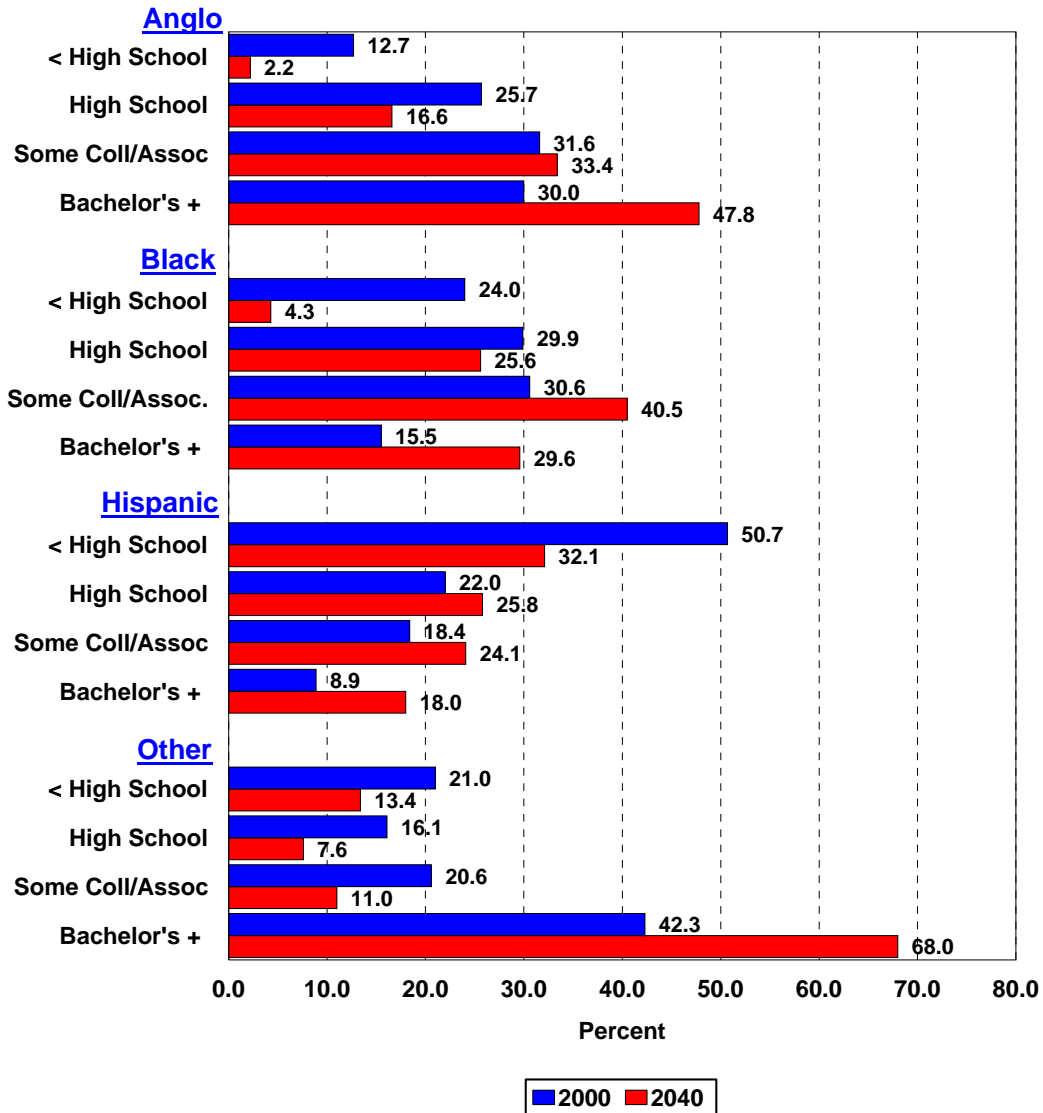
Working Lifetime Expenditures



Working Lifetime (40 Years) Total State and Local Taxes for Households by Educational Attainment of Householder (in 2000 Dollars)

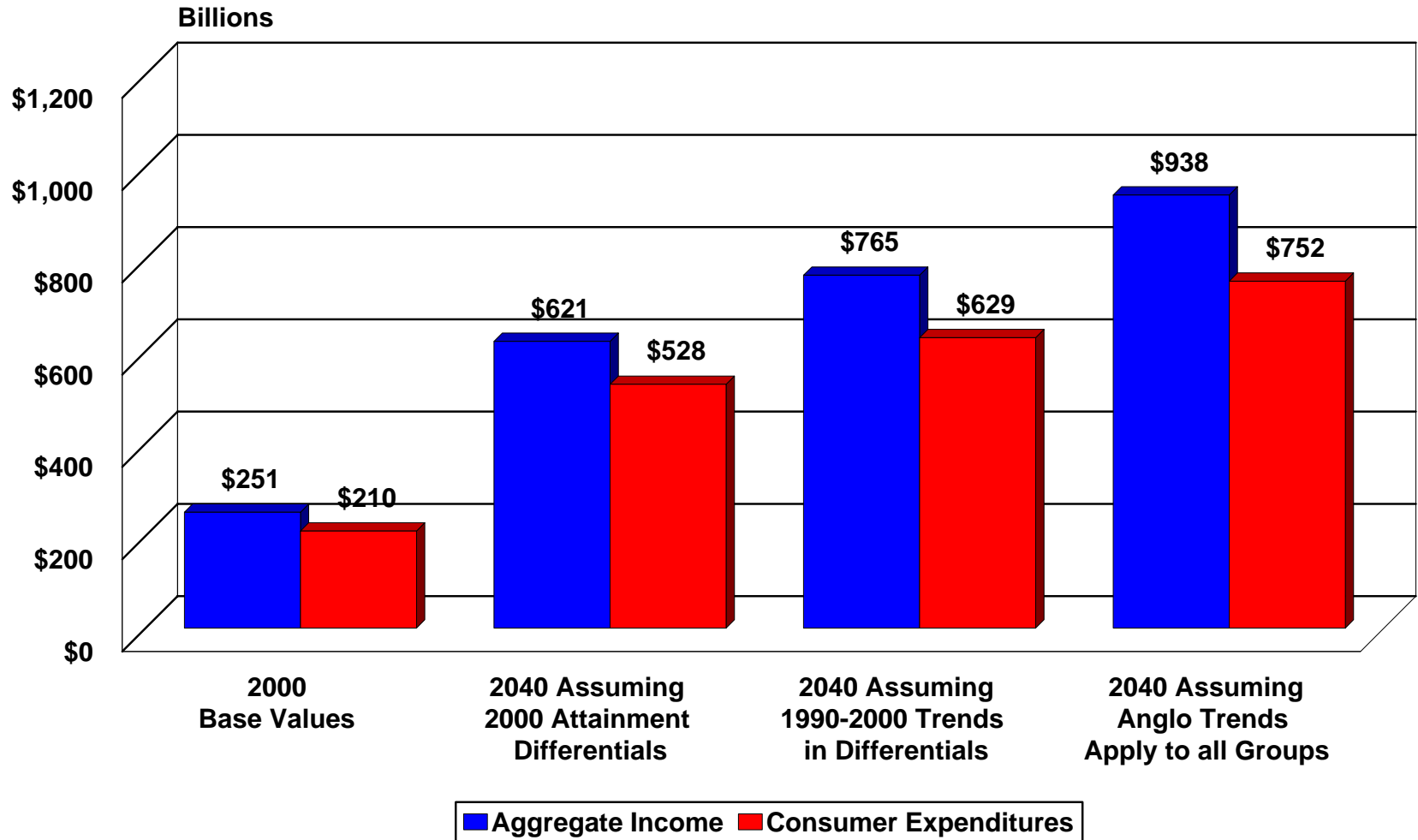


Percent of Persons 25 Years of Age or Older by Level of Educational Attainment and Race/Ethnicity in 2000 and Projected to 2040* Assuming 1990-2000 Trends in Educational Attainment Rates



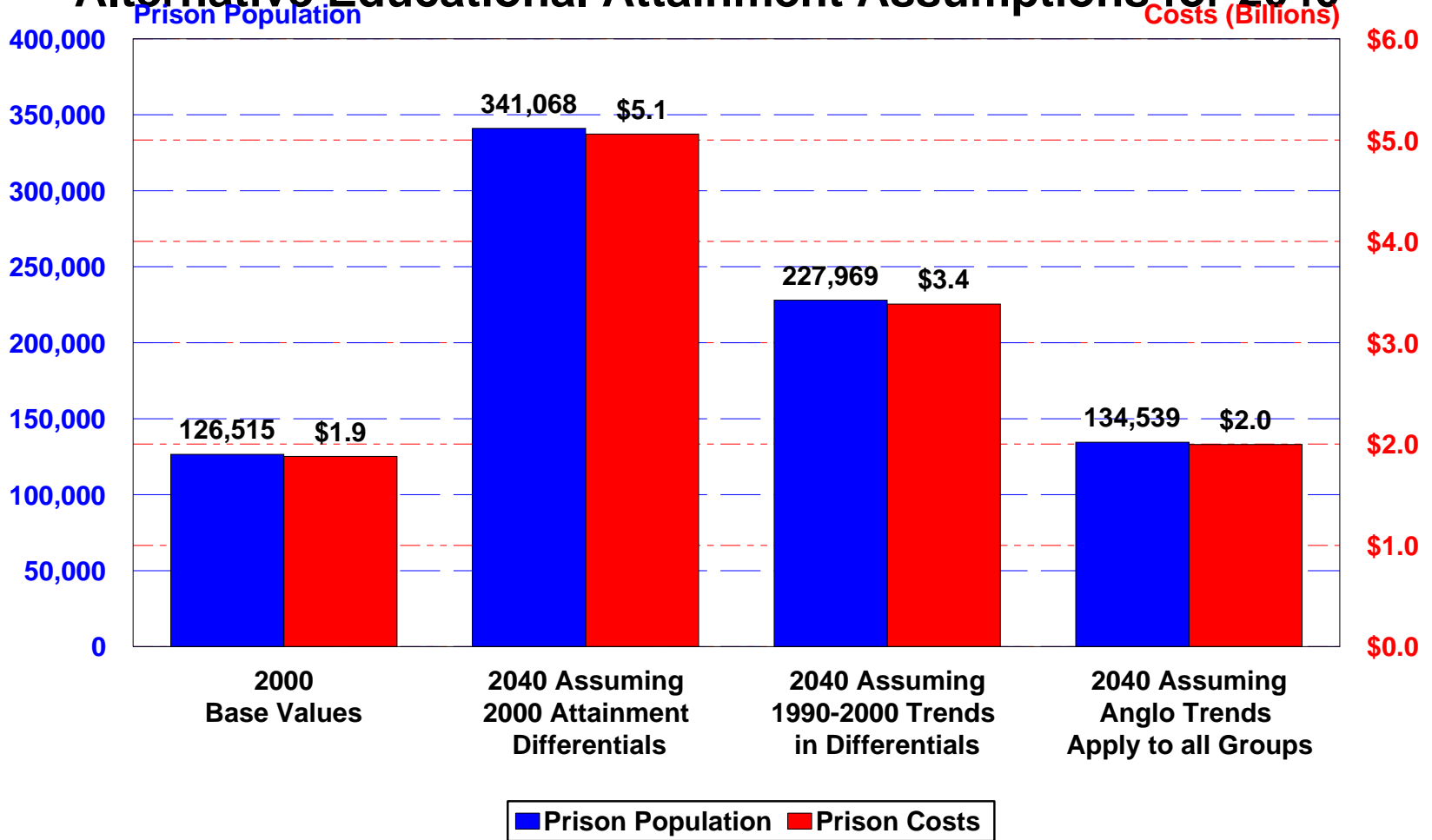
*Projections are shown for the 1.0 scenario

Aggregate Income and Consumer Expenditures for Population 25 Years of Age or Older in Texas in 2000 and Projected Under Alternative Educational Attainment Assumptions for 2040*



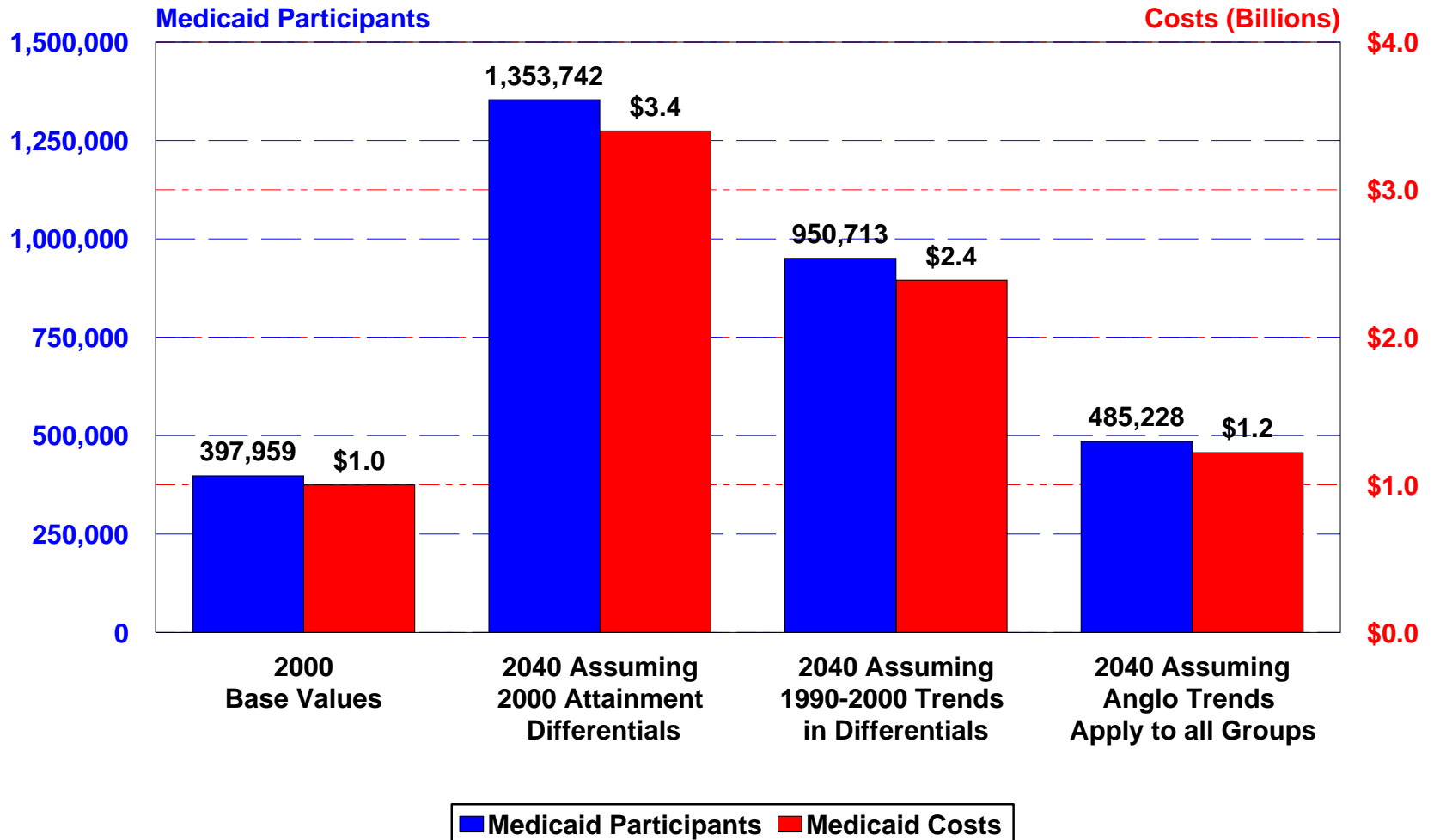
*Projections are shown for the 1.0 scenario

Prison Population and Prison Costs for Population 25 Years of Age or Older in Texas in 2000 and Projected Under Alternative Educational Attainment Assumptions for 2040*



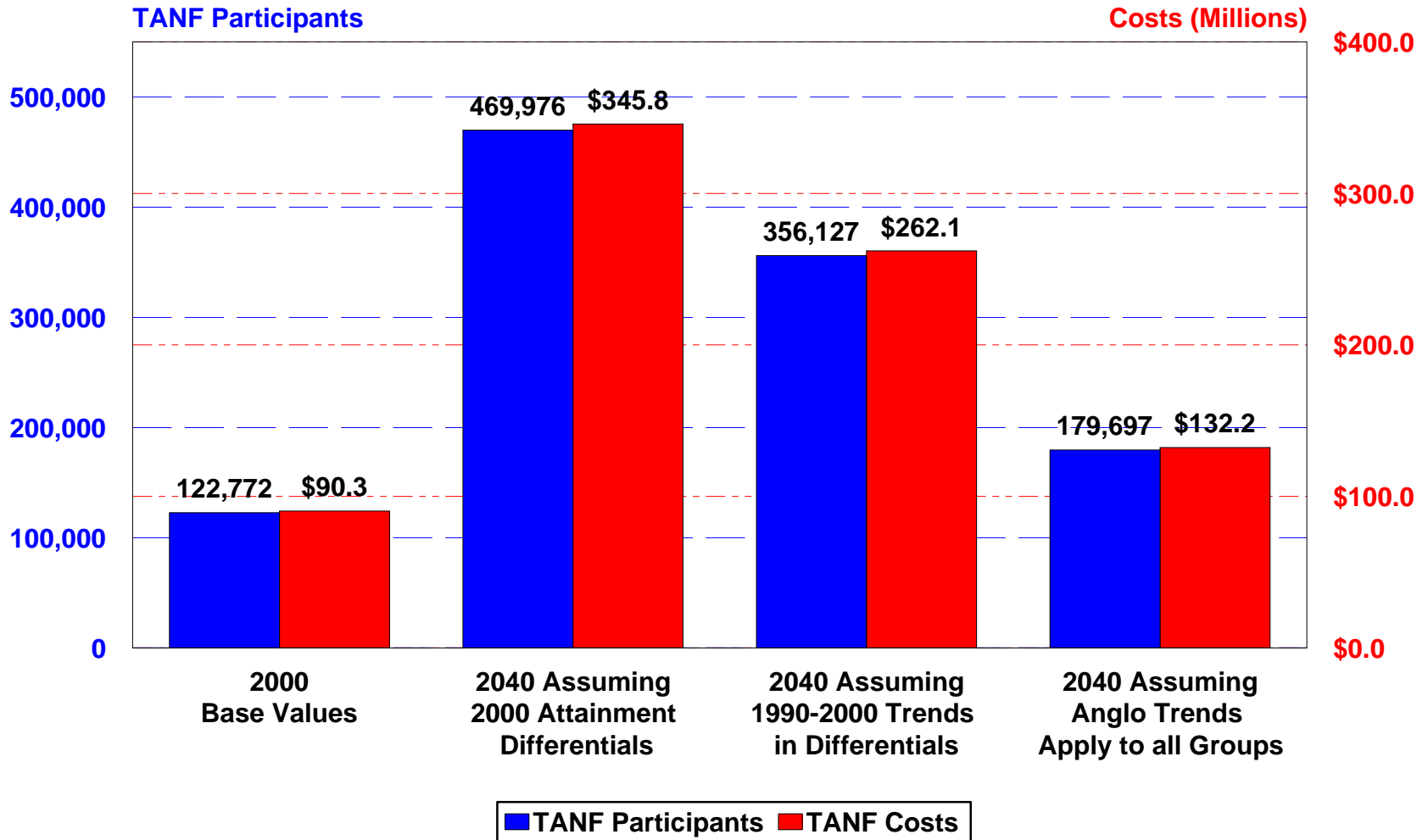
*Projections are shown for the 1.0 scenario

Medicaid Participants and Medicaid Costs for Population 25 Years of Age or Older in Texas in 2000 and Projected Under Alternative Educational Attainment Assumptions for 2040*



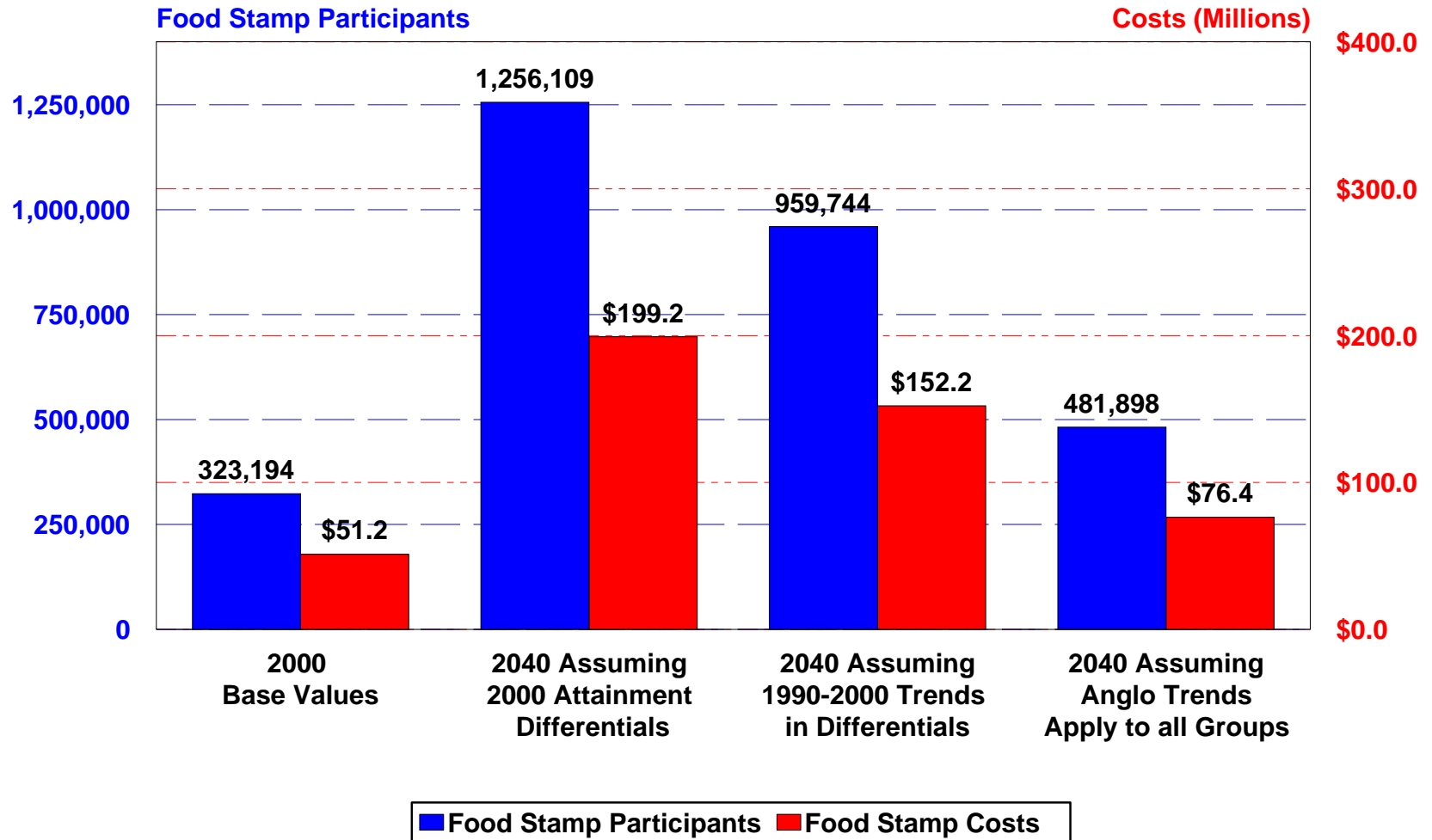
*Projections are shown for the 1.0 scenario

TANF Participants and TANF Costs for Population 25 Years of Age or Older in Texas in 2000 and Projected Under Alternative Educational Attainment Assumptions for 2040*



*Projections are shown for the 1.0 scenario

Food Stamp Participants and Food Stamp Costs for Population 25 Years of Age or Older in Texas in 2000 and Projected Under Alternative Educational Attainment Assumptions for 2040*



*Projections are shown for the 1.0 scenario

Steve Murdock
Texas State Data Center

Phone **979 - 845 - 5115**

Fax **979 - 862 - 3061**

Website **txsdc.tamu.edu**