

Figure 1: Concept Mapping Statement Point Cluster Map

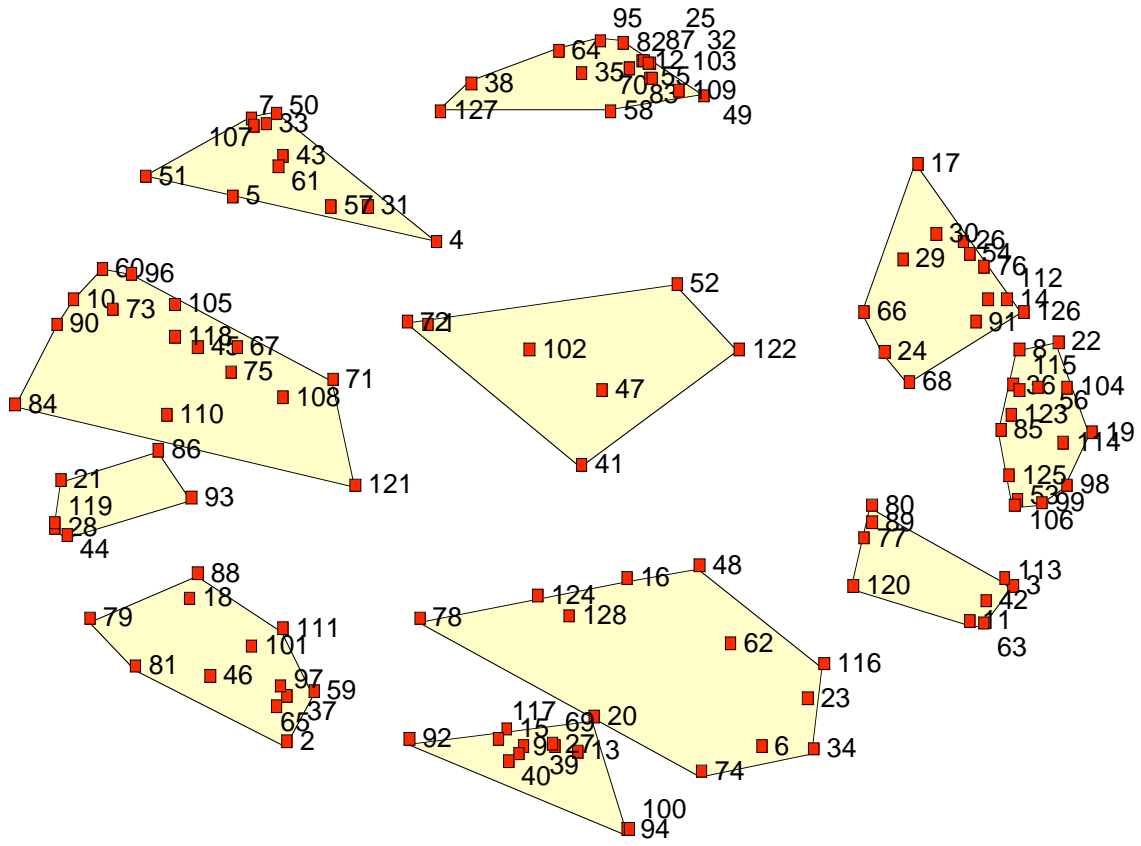
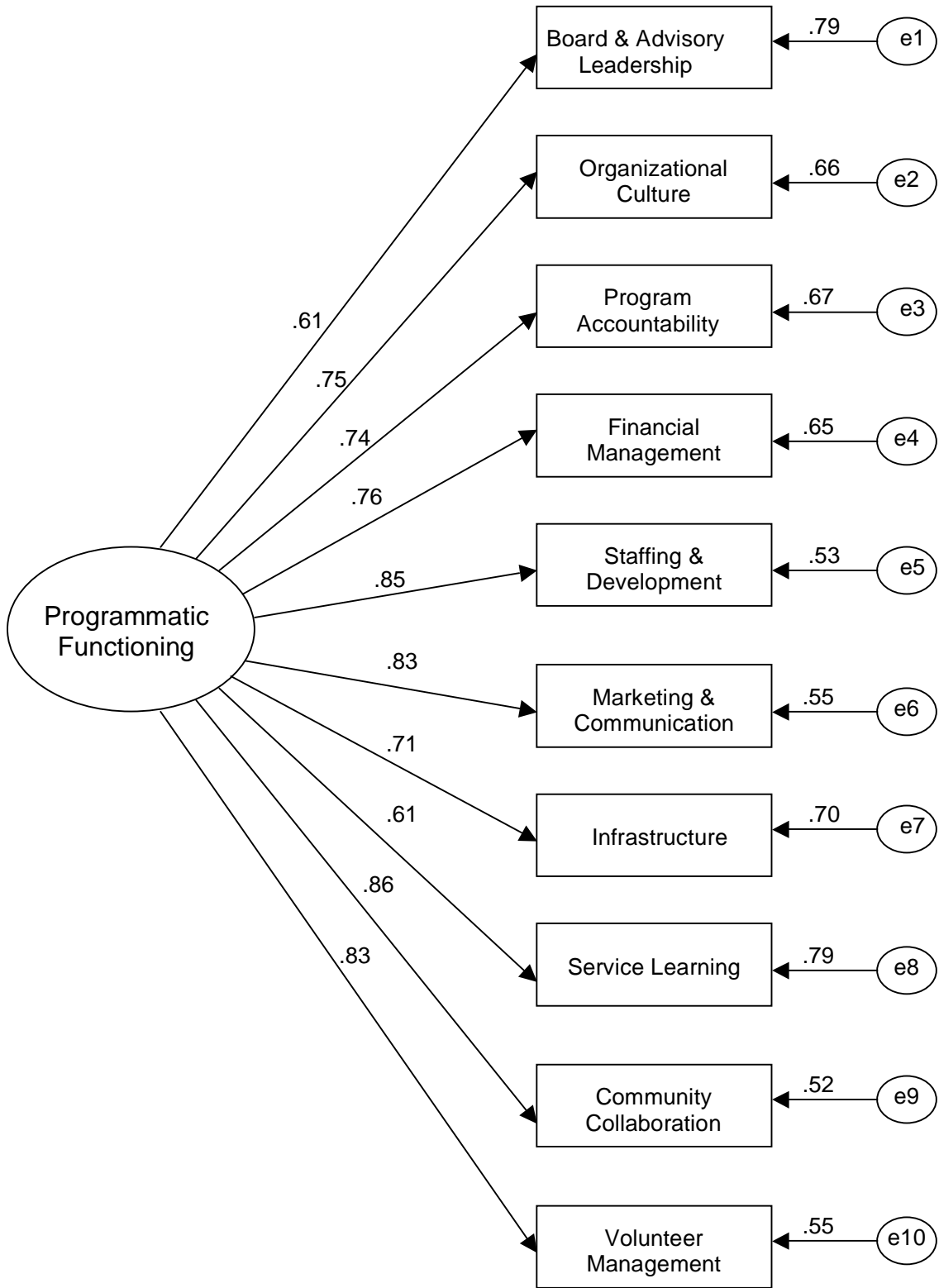


Figure 2: Concept Mapping Labeled Cluster Map



Figure 3: VPAT Programmatic Functioning Model



## REFERENCES

- Aiken, L. R. *Psychological Testing and Assessment* (8<sup>th</sup> edn.). Needham Heights, MA: Allyn & Bacon, 2000.
- Anastasi, A., and Urbina, S. *Psychological Testing* (7<sup>th</sup> edn.). Upper Saddle River, NJ: Prentice Hall, 1997.
- Bentler, P. M., and Bonnett, D. G. "Significance Tests and Goodness of Fit in the Analysis of Covariance Structures." *Psychological Bulletin*, 1980, 88, 588-606.
- Browne, M. W., and Cudeck, R. "Alternative Ways of Assessing Model Fit." In K. A. Bollen and J. S. Long (eds.), *Testing Structural Equation Models*. Newbury Park, CA: Sage, 1993.
- Cascio, W. E., Alexander, R. A., and Barrett, G. V. "Setting Cutoff Scores: Legal, Psychometric, and Professional Issues and Guidelines." *Personnel Psychology*, 1988, 41, 1-24.
- Cohen, J. *Statistical Power Analysis for the Behavioral Sciences* (2<sup>nd</sup> edn.). New Jersey: Lawrence Erlbaum, 1988.
- Colorado Trust. *Providing Technical Assistance to Build Organizational Capacity: Lessons Learned through The Colorado Trust's Supporting Immigrant and Refugee Families Initiative (SIRFI)*. Denver, CO. 2002. Retrieved Nov. 19, 2003 from <http://www.coloradotruster.org/repository/publications/pdfs/TAforSIRFI.pdf>.
- Concept Systems, Inc. *The Concept System: Facilitator Training Seminar Manual*. Ithaca, NY: Concept Systems, Inc. Retrieved June 23, 2003 from <http://www.conceptsystems.com>.

- Cronbach, L. J. "Coefficient Alpha and the Internal Structure of Tests." *Psychometrika*, 1951, 16, 297-334.
- Ebel, R. L. *Essentials of Educational Measurement* (2<sup>nd</sup> edn.). Englewood Cliff, NJ: Prentice Hall, 1972.
- Flynn, P. and Hodgkinson, V. *Measuring the Impact of the Nonprofit Sector*. New York: Kluwer Academic/Plenum Publishers, 2001.
- Hall, M., Phillips, S., Meillat, C., and Pickering, D. *Assessing Performance: Evaluation Practices and Perspectives in Canada's Voluntary Sector*. Toronto, Ontario: Canadian Center for Philanthropy, 2003.
- Herman, R. D., and Renz, D. O. "Nonprofit Organizational Effectiveness: Contrasts Between Especially Effective and Less Effective Organizations." *Nonprofit Management & Leadership*, 1998, 9(1), 23-38.
- Inglis, S., and Cleave, S. "A Scale to Assess Board Member Motivations in Nonprofit Organizations." *Nonprofit Management & Leadership*, 2006, 17(1):83-101.
- Kanji, G. K. "Business Excellence: Make it Happen." *Total Quality Management*, 2002, 13(8), 1115-1124.
- Nunnally, J. C., and Bernstein, I. H. *Psychometric Theory* (3<sup>rd</sup> edn.). New York: McGraw Hill, 1994.
- Poole, D. L., Nelson, J., Carnahan, S., Chepenik, N. G., and Tubiak, C. "Evaluating Performance Measurement Systems in Nonprofit Agencies: The Program Accountability Quality Scale (PAQs)." *American Journal of Evaluation*, 2000, 21(1), 15-26.
- Pyrczak, F. "Validity of the Discrimination Index as a Measure of Item Validity." *Journal of Educational Measurement*, 1973, 10, 227-231.

- Rehnborg, S. J. "Government Volunteerism in the New Millennium." *Emerging Areas of Volunteerism, ARNOVA Occasional Paper Series*, 2005, 1(2), 93-112.
- Rehnborg, S. J., Poole, D. L., Casey, K., Duvall, D., and Mangrum, L. F. *Tool for Improving Programs: A National Quality Assessment Project for National and Community Service Programs*. Austin, TX: The University of Texas at Austin, 2004.
- Royce, D. and Thyer, B.A. *Program Evaluation: An Introduction* (2<sup>nd</sup> edn.) Chicago: Nelson-Hall Publishers, 1996.
- Salvia, J., and Ysseldyke, J. E. *Assessment* (8<sup>th</sup> edn.). Boston: Houghton Mifflin, 2001.
- Shilbury, D. and Moore, K. "A Study of Organizational Effectiveness for National Olympic Sporting Organizations." *Nonprofit and Volunteering Sector Quarterly*, 2006, 35(1), 5-38.
- Trochim, W. M. K. "An Introduction to Concept Mapping for Planning and Evaluation." *Evaluation and Program Planning*, 18, 143-153.
- Tucker, L. R., and Lewis, C. "A Reliability Coefficient for Maximum Likelihood Factor Analysis." *Psychometrika*, 1973, 38, 1-10.

## AUTHOR IDENTIFICATION

Sarah Jane Rehnberg, Ph.D., is a professor and the Assistant Director of the RGK Center for Philanthropy and Community Service at the LBJ School of Public Affairs at the University of Texas at Austin.

Dennis Poole, Ph.D., is a Dean and Professor in the College of Social Work at the University of South Carolina at Columbia.

Michael K. Roemer, M.A., is a doctoral candidate in the Sociology Department at The University of Texas at Austin and a Graduate Research Assistant at the RGK Center for Philanthropy and Community Service.

Laurel Mangrum, Ph.D., is a research scientist at the Addiction Research Institute at the University of Texas at Austin.

Kathleen Casey, M.A., is a doctoral candidate at the University of Texas at Austin and a Project Director for Austin Travis County Mental Health and Mental Retardation Center in Austin, Texas.

Deborah Duvall, L.M.S.W., is the Assistant to the Dean in the College of Social Work at the University of South Carolina at Columbia.

