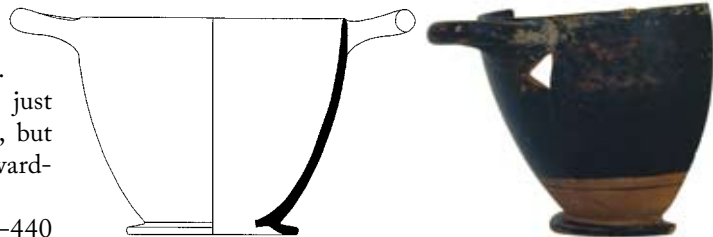


Site 737

T 18-02 BG skyphos (MM 323.305)

Dimensions: height 8.6 base 6.8 rim diam. 10.6*Condition:* About half survived, including one handle.*Description:* 2-cm high reserved band around base, just above the foot. Underside of the bottom reserved, but foot and resting surface covered by gloss. Slightly inward-curving rim.*Date:* Type B1(i) cf. S40. Elliott (1998) 678, dated 460–440 BC. And S56, T 336-9 (weighted date range 468-442 BC). Cf. the Attic skyphos in Agora XII 257 no. 316, pl. 14 (450 BC) and the skyphos of colonial manufacture

1:3

from Caulonia: Gagliardi (2001) 305 no. 52, pl. 280f, variant B2 (460–430 BC). (FS)

Site 737

T 18-03 BG amphora (MM 323.312)

Dimensions: height (preserved) 9.6 base 9.2*Condition:* Only lower third and base preserved.*Description:* Molded foot, the upper side covered with gloss. There is a wide band from foot up that is reserved, as is the whole underside of the foot and the bottom. Gloss on exterior only.*Date:* End of the 6th c. BC? Unlike any of the amphorae from the Pantanello Necropolis. It resembles more closely than any other A18 from T 339 (dated 480–460 BC), but the underside of the base is quite different. See also the amphora from T 29 at Meta-

1:3

pontion: Lo Porto (1966) 209-210 Fig. 64 (dated to the middle of the 6th c., but associated with a completely glossed "Metapontine" skyphos). (FS)

Site 737

T 18-04 BG skyphos, base (MM 323.306)

Dimensions: height 7.4 base 6.25*Condition:* Lower part only.*Description:* Underside of bottom and resting surface are reserved.*Date:* Type B2, like S3, dated 440–400 BC, Elliott (1998) 677–678. Compare also the profile with that of S49, from Pantanello T 303, dated 400–360 BC, Necropoleis 322, Elliott (1998) 681. See also the Attic example from the

1:3

chamber tomb in Via Dante at Taranto: Patera (1986) 46 no. 18, pl. XVIII.18 (last quarter of the 5th c. BC). (FS)

Site 737

T 18-05 BG mug (MM 323.307)

Dimensions: height 7.4 base 5.1 rim diam. 5.7*Condition:* Chipped mouth.*Description:* Reserved are the underside of the bottom and resting surface; small hollow circle on bottom.*Date:* For the form, cf. T 21-02. The morphological characteristics of the example from T 18, particularly the lightly accentuated "S" profile, are comparable to those of examples datable to the last quarter of the 5th c. BC. See, for example, the olpe from T LX=92 at Ortona: Ortona VII 2.47-48 Fig. 196, dated to 375 BC but probably belonging

1:3

to the last quarter of the 5th c. (Forentum I 236-237 n. 2). See also the olpe from T 15 at Fratte: Fratte 273 no. 1, Fig. 465.1, end of the 5th c. BC. (FS)