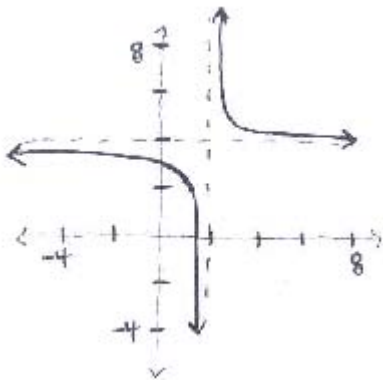


FUNCTIONS AND THEIR GRAPHS

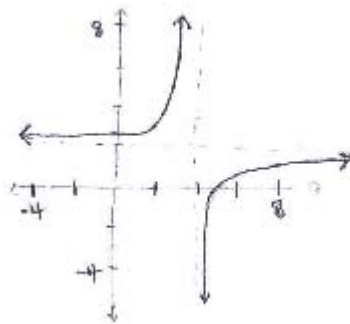
Determine which graph best represents the given function, then verify using method described in class.
Note: not necessarily drawn to scale.

1. $f(x) = \frac{2x}{x-4}$

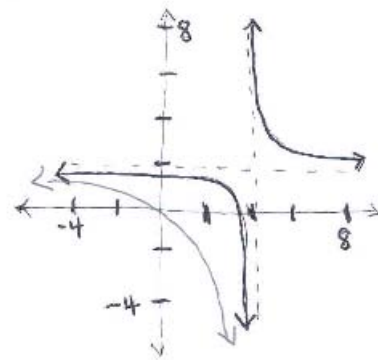
a.



b.

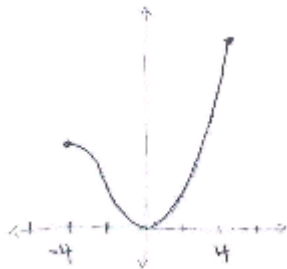


c.

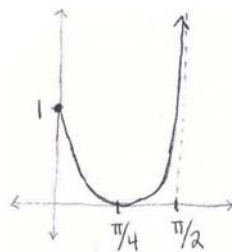


2. $f(x) = x^3 + 6x^2$ $x \in [-4, 4]$

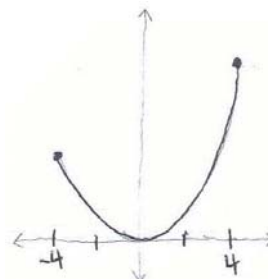
a.



b.

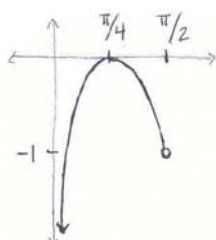


c.

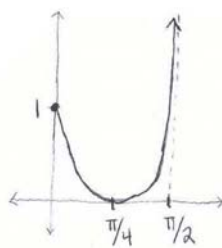


3. $f(x) = 2 \tan x - \sec^2 x$ $x \in \left(0, \frac{\pi}{2}\right)$

a.



b.



c.

